

LOC I-LKU 108.55	APP CRS 272°	Rwy Idg TDZE Apt Elev	4300 494 494
----------------------------	------------------------	-----------------------------	---

LOC RWY 27

LOUISA COUNTY/FREEMAN FLD (LKU)

DME required.

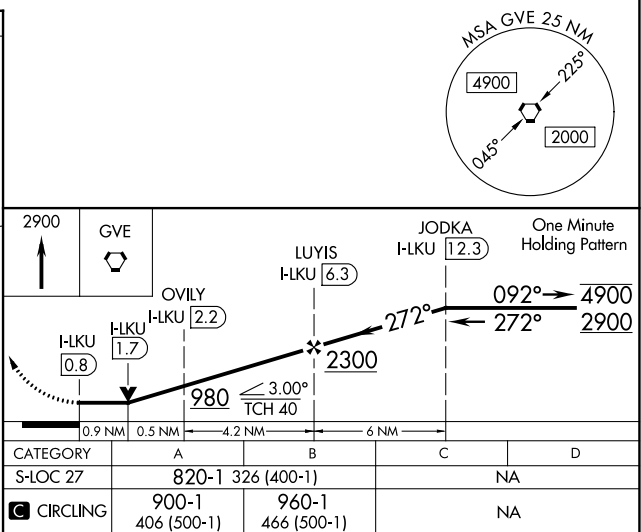
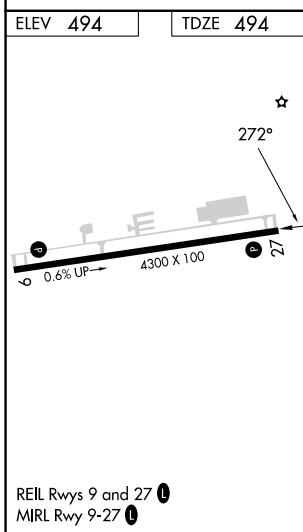
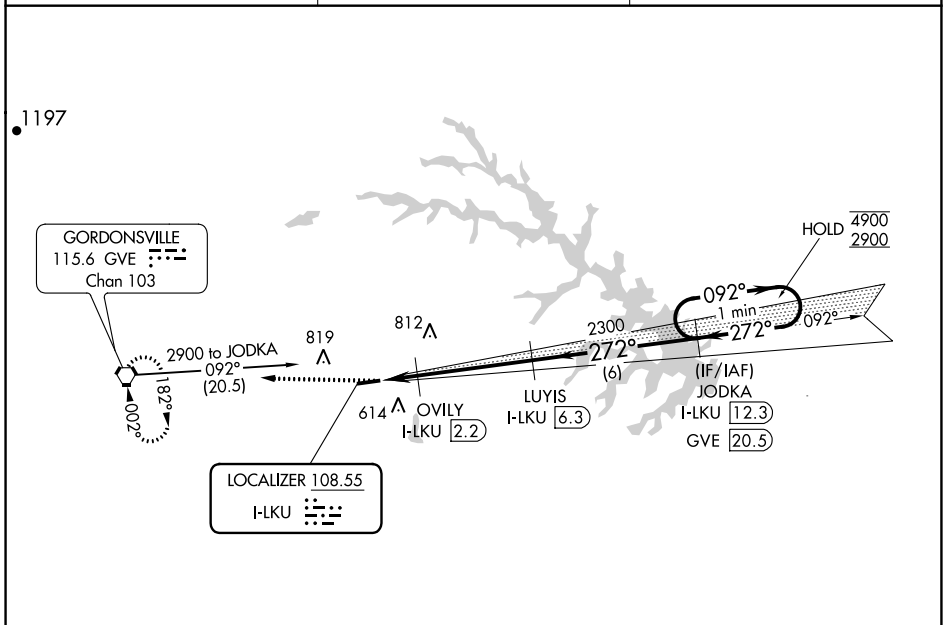
▽ **△** NA Circling NA north of Rwy 9-27. When local altimeter setting not received, use Orange altimeter setting and increase all MDA 40 feet. VDP NA when using Orange altimeter setting.

MISSED APPROACH:
Climb to 2900 direct
GVE VORTAC and hold.

AWOS-3
119.475

POTOMAC APP CON
132.85 323.125

UNICOM
122.975 (CTAF) 0



NE-3, 11 JUL 2024 to 08 AUG 2024

NE-3, 11 JUL 2024 to 08 AUG 2024