

WAAS CH 86702 W16A	APP CRS 163°	Rwy ldg TDZE 16 Apt Elev 16
--	------------------------	---

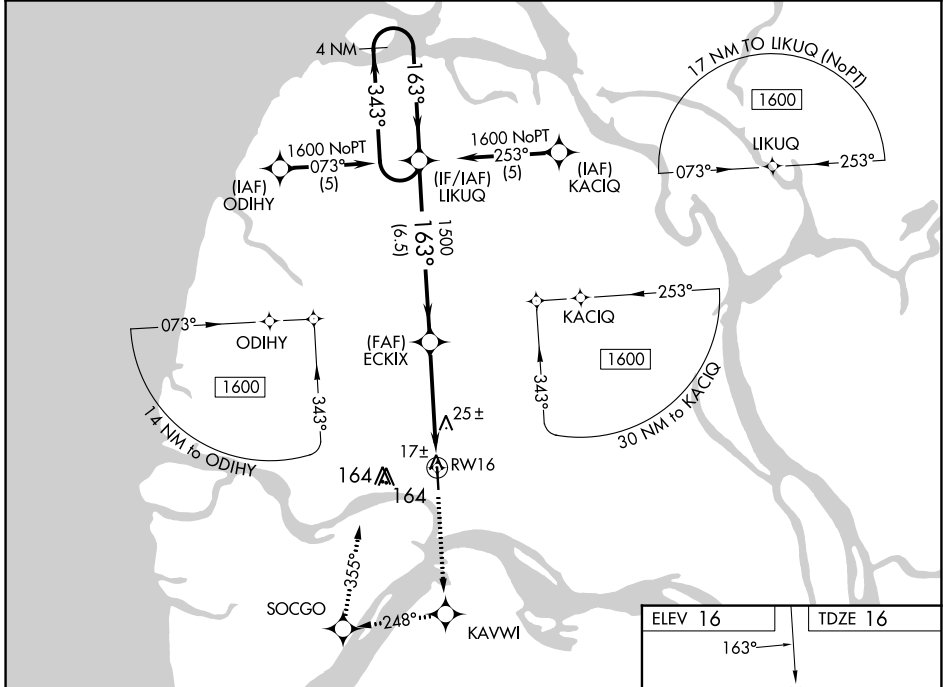
RNAV (GPS) RWY 16

EMMONAK (ENM) (PAEM)

⚠ If local altimeter setting not received, use St Mary's altimeter setting and increase all DAs 168 feet and all MDAs 180 feet. VDP NA with St Mary's altimeter setting. DME/DME RNP: 0.3 NA. Baro-VNAV NA when using St Mary's altimeter setting. For uncompensated Baro-VNAV systems, LNAV/VNAV NA below -25°C (-13°F) or above 48°C (119°F).

MISSED APPROACH: Climb to 1600 direct KAVWI and right turn via 248° track to SOCGO and right turn via 355° track to LIKUQ and hold.

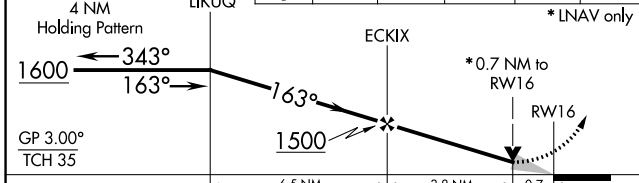
AWOS-3P 135.35	ANCHORAGE CENTER 124.0	CTAF 122.9
--------------------------	----------------------------------	----------------------



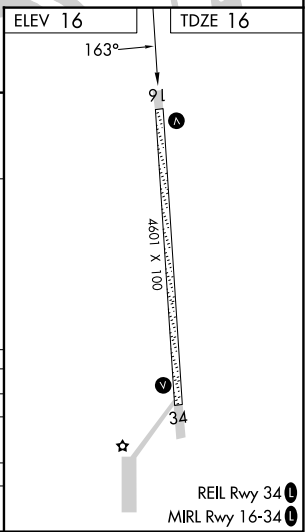
VGSI and RNAV glidepath not coincident (VGSI Angle 3.00/TCH 32).

1600	KAVWI	SOCGO	LIKUQ
↑	◆	↪ tr 248°	↪ tr 355°

* LNAV only



CATEGORY	A	B	C	D
LPV DA		266-1	250 (300-1)	
LNAV/VNAV DA		280-1	264 (300-1)	
LNAV MDA		280-1	264 (300-1)	
CIRCLING	520-1	504 (600-1)	520-1½ 504 (600-1½)	580-2 564 (600-2)



AK, 11 JUL 2024 to 05 SEP 2024

AK, 11 JUL 2024 to 05 SEP 2024