

GARLAND FIVE DEPARTURE
(GARL5.TT) 251AN24

FORT WORTH, TEXAS
FORT WORTH SPINKS (F'W'S)

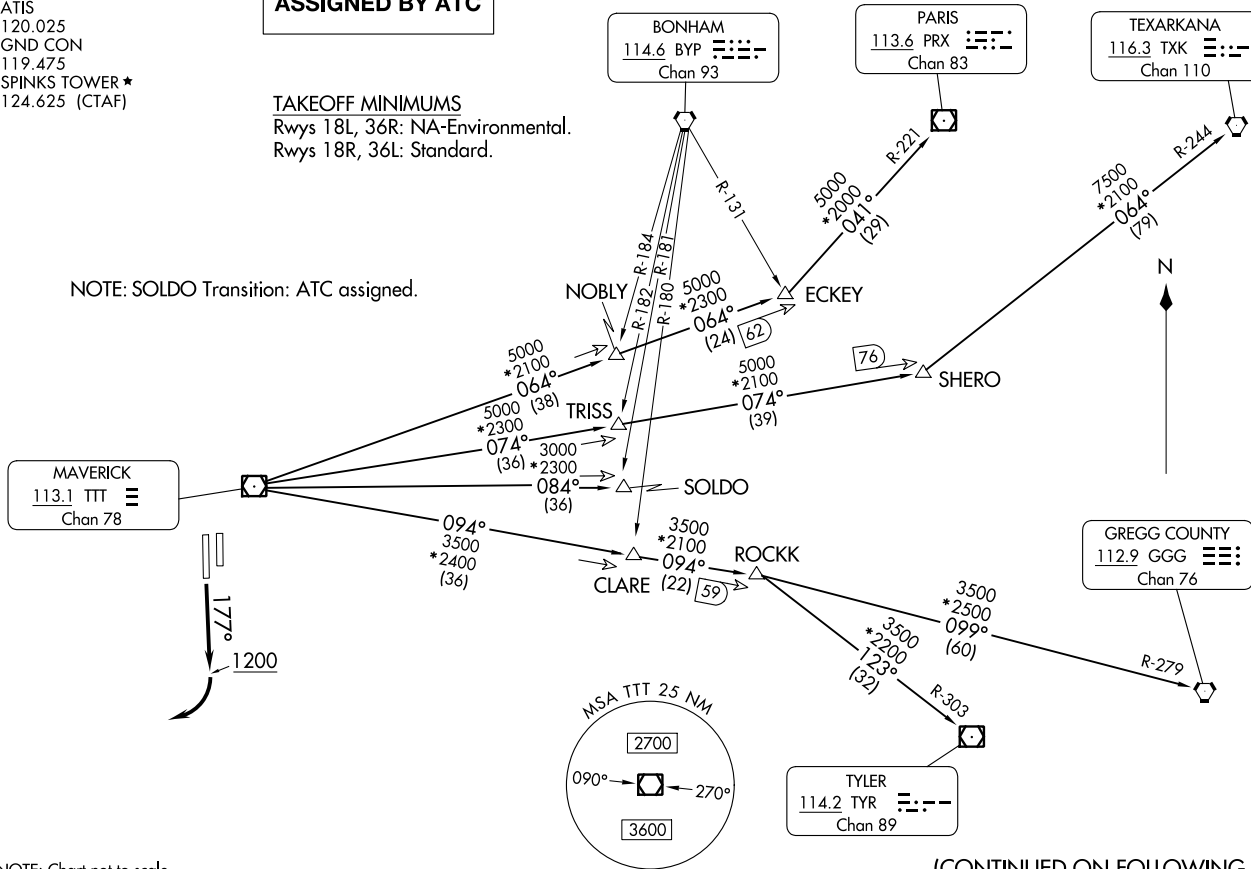
REGIONAL DEP CON
135.975 379.9
ATIS
120.025
GND CON
119.475
SPINKS TOWER *
124.625 (CTAF)

**TOP ALTITUDE:
ASSIGNED BY ATC**

TAKEOFF MINIMUMS
Rwys 18L, 36R: NA-Environmental.
Rwys 18R, 36L: Standard.

NOTE: SOLDO Transition: ATC assigned.

RADAR and DME required.



(CONTINUED ON FOLLOWING PAGE)

(GARL5.TT) 24025
GARLAND FIVE DEPARTURE

FORT WORTH SPINKS (F'W'S)
FORT WORTH, TEXAS

AL-6917 (FAA)

GARLAND FIVE DEPARTURE



DEPARTURE ROUTE DESCRIPTION

TAKEOFF RUNWAY 18R: Climb on heading 177° to 1200 before turning right.

When entering controlled airspace, fly assigned heading for RADAR vectors to appropriate route. Maintain ATC assigned altitude.

GREGG COUNTY TRANSITION (GARL5.GGG): From over TTT VOR/DME on TTT R-094 to ROCKK, then on GGG R-279 to GGG VORTAC.

PARIS TRANSITION (GARL5.PRX): From over TTT VOR/DME on TTT R-064 to ECKEY, then on PRX R-221 to PRX VOR/DME.

SOLDO TRANSITION (GARL5.SOLDO): From over TTT VOR/DME on TTT R-084 to SOLDO.

TEXARKANA TRANSITION (GARL5.TXK): From over TTT VOR/DME on TTT R-074 to SHERO, then on TXK R-244 to TXK VORTAC.

TYLER TRANSITION (GARL5.TYR): From over TTT VOR/DME on TTT R-094 to ROCKK, then on TYR R-303 to TYR VOR/DME.

SC-2, 11 JUL 2024 to 08 AUG 2024

SC-2, 11 JUL 2024 to 08 AUG 2024