

DALLAS THREE DEPARTURE  
(DAL3 TTT) 25ANZ4

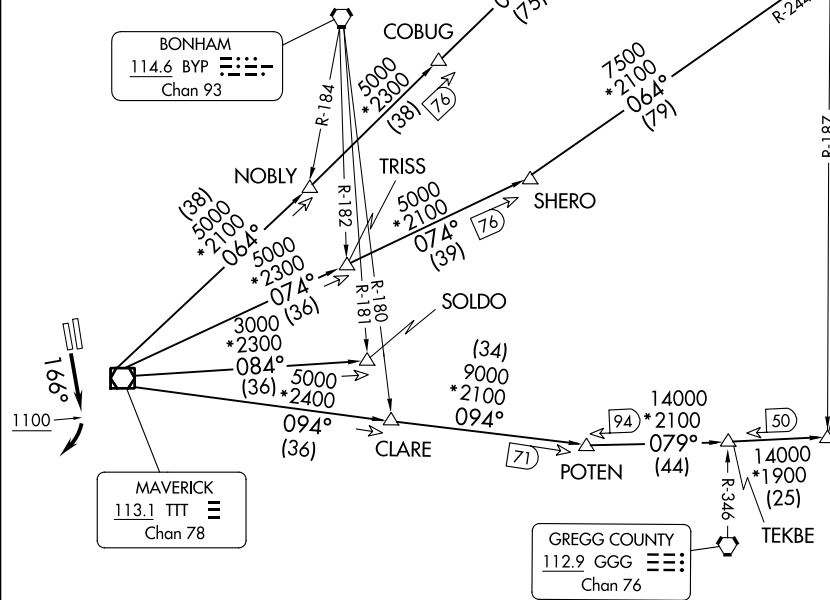
FORT WORTH, TEXAS  
PEROT FLD/FORT WORTH ALLIANCE (AFTW)

REGIONAL DEP CON  
118.1 306.95  
ATIS  
126.925  
CLNC DEL  
128.725  
GND CON  
132.65 306.2  
ALLIANCE TOWER  
135.15 257.9

RADAR and DME required.

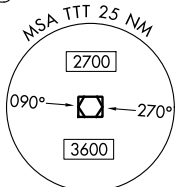
NOTE: BELCHER Transition: For aircraft inbound to the JAN, MLU, and SHV terminal areas only.  
NOTE: SOLDO Transition: ATC assigned.

TOP ALTITUDE:  
ASSIGNED BY ATC



LITTLE ROCK  
113.9 LIT  
Chan 86

TEXARKANA  
116.3 TXK  
Chan 110



**TAKEOFF MINIMUMS**  
Rwys 34L/R: Standard.  
Rwy 16L: 300-2¼ or standard with minimum climb of 220'/NM to 1100, or alternatively, with standard takeoff minimums and a normal 200'/NM climb gradient, takeoff must occur no later than 1900' prior to DER.  
Rwy 16R: 300-2¼ or standard with minimum climb of 225'/NM to 1100, or alternatively, with standard takeoff minimums and a normal 200'/NM climb gradient, takeoff must occur no later than 2000' prior to DER.

BELCHER  
117.4 EIC  
Chan 121

GREGG COUNTY  
112.9 GGG  
Chan 76

(CONTINUED ON FOLLOWING PAGE)

NOTE: Chart not to scale.

(DAL3 TTT) 24025  
DALLAS THREE DEPARTURE

AL-6918 (FAA) PEROT FLD/FORT WORTH ALLIANCE (AFTW)  
FORT WORTH, TEXAS

# DALLAS THREE DEPARTURE



## DEPARTURE ROUTE DESCRIPTION

TAKEOFF RUNWAY 16R: Climb on heading 166° to 1100 before turning right.

When entering controlled airspace, fly assigned heading for RADAR vectors to appropriate route. Maintain ATC assigned altitude.

BELCHER TRANSITION (DALL3.EIC): From over TTT VOR/DME on TTT R-094 to POTEN, then on EIC R-259 to EIC VORTAC.

LITTLE ROCK TRANSITION (DALL3.LIT): From over TTT VOR/DME on TTT R-064 to ORTRO, then on LIT R-235 to LIT VORTAC.

SOLDO TRANSITION (DALL3.SOLDO): From over TTT VOR/DME on TTT R-084 to SOLDO.

TEXARKANA TRANSITION (DALL3.TXK): From over TTT VOR/DME on TTT R-074 to SHERO, then on TXK R-244 to TXK VORTAC.

SC-2, 11 JUL 2024 to 08 AUG 2024

SC-2, 11 JUL 2024 to 08 AUG 2024