

KINGDOM FOUR DEPARTURE  
(KING4.TTT) 25JAN24

PEROT FLD/FORT WORTH ALLIANCE (AFTW)  
FORT WORTH, TEXAS

RADAR and DME required.

**TOP ALTITUDE:  
ASSIGNED BY ATC**

REGIONAL DEP CON  
118.1 306.95  
ATIS  
126.925  
CLNC DEL  
128.725  
GND CON  
132.65 306.2  
ALLIANCE TOWER  
135.15 257.9

(KING4.TTT) 24053  
KINGDOM FOUR DEPARTURE

AL-6918 (FAA)

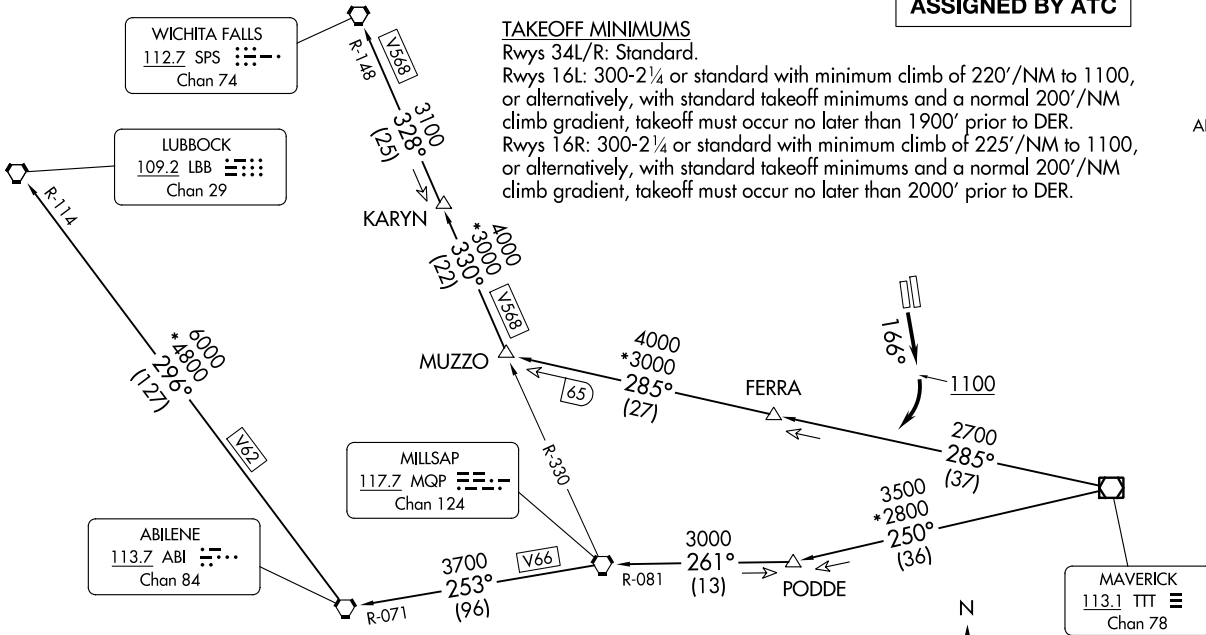
PEROT FLD/FORT WORTH ALLIANCE (AFTW)  
FORT WORTH, TEXAS

**TAKEOFF MINIMUMS**

Rwys 34L/R: Standard.

Rwys 16L: 300-2¼ or standard with minimum climb of 220'/NM to 1100, or alternatively, with standard takeoff minimums and a normal 200'/NM climb gradient, takeoff must occur no later than 1900' prior to DER.

Rwys 16R: 300-2¼ or standard with minimum climb of 225'/NM to 1100, or alternatively, with standard takeoff minimums and a normal 200'/NM climb gradient, takeoff must occur no later than 2000' prior to DER.



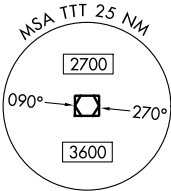
NOTE: LUBBOCK Transition: For all aircraft overflying the MQP VORTAC westbound or direct.

NOTE: MILLSAP Transition: For all aircraft overflying the MQP VORTAC westbound or direct.

NOTE: PODDE Transition: ATC assigned.

NOTE: WICHITA FALLS Transition: For all aircraft landing within the Wichita Falls terminal area or overflying the SPS VORTAC.

NOTE: For all aircraft requesting 17000 and below.



NOTE: Chart not to scale.

(CONTINUED ON FOLLOWING PAGE)

# KINGDOM FOUR DEPARTURE



## DEPARTURE ROUTE DESCRIPTION

TAKEOFF RUNWAY 16R: Climb on heading 166° to 1100 before turning right.

When entering controlled airspace, fly assigned heading for RADAR vectors to appropriate route. Maintain ATC assigned altitude.

LUBBOCK TRANSITION (KING4.LBB): From over TTT VOR/DME on TTT R-250 to PODDE, then on MQP R-081 to MQP VORTAC, then on MQP R-253 and ABI R-071 to ABI VORTAC, then on ABI R-296 and LBB R-114 to LBB VORTAC.

MILLSAP TRANSITION (KING4.MQP): From over TTT VOR/DME on TTT R-250 to PODDE, then on MQP R-081 to MQP VORTAC.

PODDE TRANSITION (KING4.PODDE): From over TTT VOR/DME on TTT R-250 to PODDE.

WICHITA FALLS TRANSITION (KING4.SPS): From over TTT VOR/DME on TTT R-285 to MUZZO, then on MQP R-330 and SPS R-148 to KARYN, then on SPS R-148 to SPS VORTAC.

SC-2, 11 JUL 2024 to 08 AUG 2024

SC-2, 11 JUL 2024 to 08 AUG 2024