

KUSSO ONE DEPARTURE (RNAV)
(KUSSO1 .KUSSO) 24MAR22

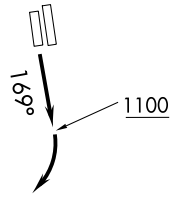
PEROT FLD/FORT WORTH ALLIANCE (AFTW)
FORT WORTH, TEXAS

ATIS
126.925
CLNC DEL
128.725
GND CON
132.65 306.2
ALLIANCE TOWER
135.15 257.9
REGIONAL DEP CON
118.1 306.95

TAKEOFF MINIMUMS

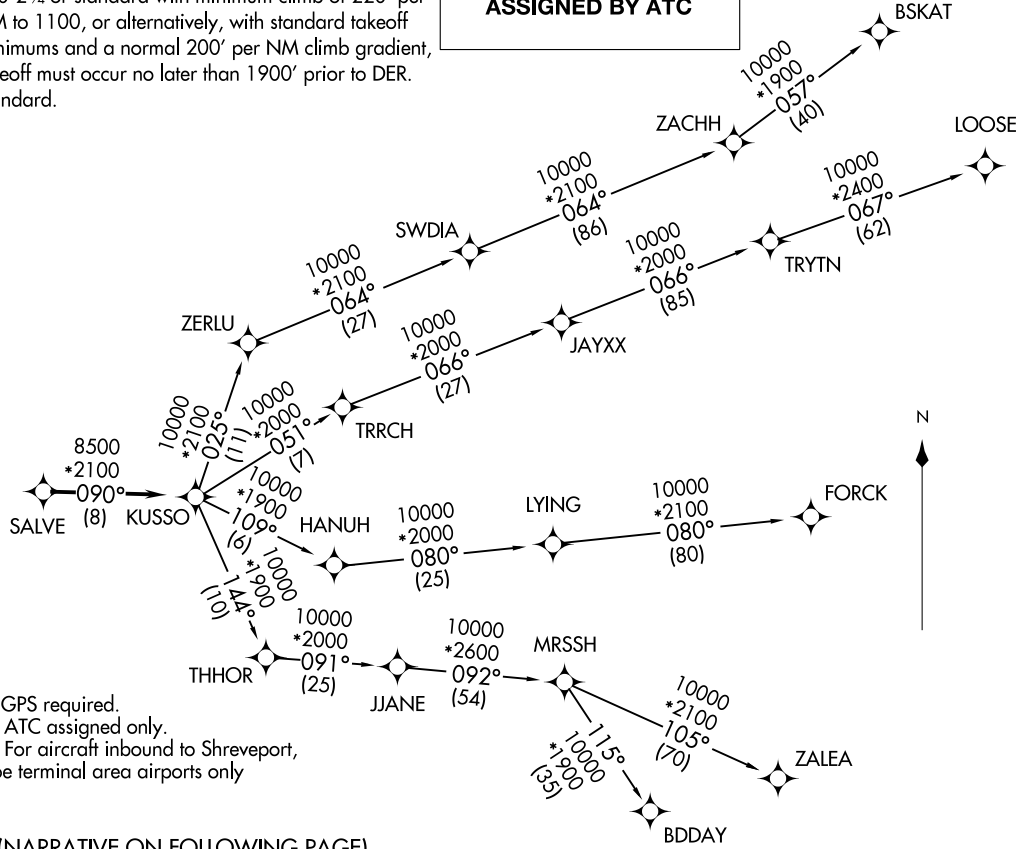
Rwys 16L/R: 300-2¼ or standard with minimum climb of 220' per NM to 1100, or alternatively, with standard takeoff minimums and a normal 200' per NM climb gradient, takeoff must occur no later than 1900' prior to DER.
Rwys 34L/R: Standard.

**TOP ALTITUDE:
ASSIGNED BY ATC**



- NOTE: RADAR required.
- NOTE: RNAV 1.
- NOTE: DME/DME/IRU or GPS required.
- NOTE: BDDAY Transition: ATC assigned only.
- NOTE: MRSSH Transition: For aircraft inbound to Shreveport, Jackson and Monroe terminal area airports only

(NARRATIVE ON FOLLOWING PAGE)



NOTE: Chart not to scale.

(KUSSO1 .KUSSO) 22251
KUSSO ONE DEPARTURE (RNAV)

AL-6918 (FAA)
PEROT FLD/FORT WORTH ALLIANCE (AFTW)
FORT WORTH, TEXAS

KUSSO ONE DEPARTURE (RNAV)



DEPARTURE ROUTE DESCRIPTION

TAKEOFF RUNWAY 16R: Climb on heading 169° to 1100 before turning right.

When entering controlled airspace, fly heading assigned by ATC, expect vector to SALVE, then on track 090° to KUSSO, then on assigned transition. Maintain ATC assigned altitude, expect filed altitude 10 minutes after departure.

- BDDAY TRANSITION (KUSSO1.BDDAY)
- BSKAT TRANSITION (KUSSO1.BSKAT)
- FORCK TRANSITION (KUSSO1.FORCK)
- LOOSE TRANSITION (KUSSO1.LOOSE)
- MRSSH TRANSITION (KUSSO1.MRSSH)
- ZALEA TRANSITION (KUSSO1.ZALEA)

SC-2, 11 JUL 2024 to 08 AUG 2024

SC-2, 11 JUL 2024 to 08 AUG 2024