

# NANDR TWO DEPARTURE (RNAV)

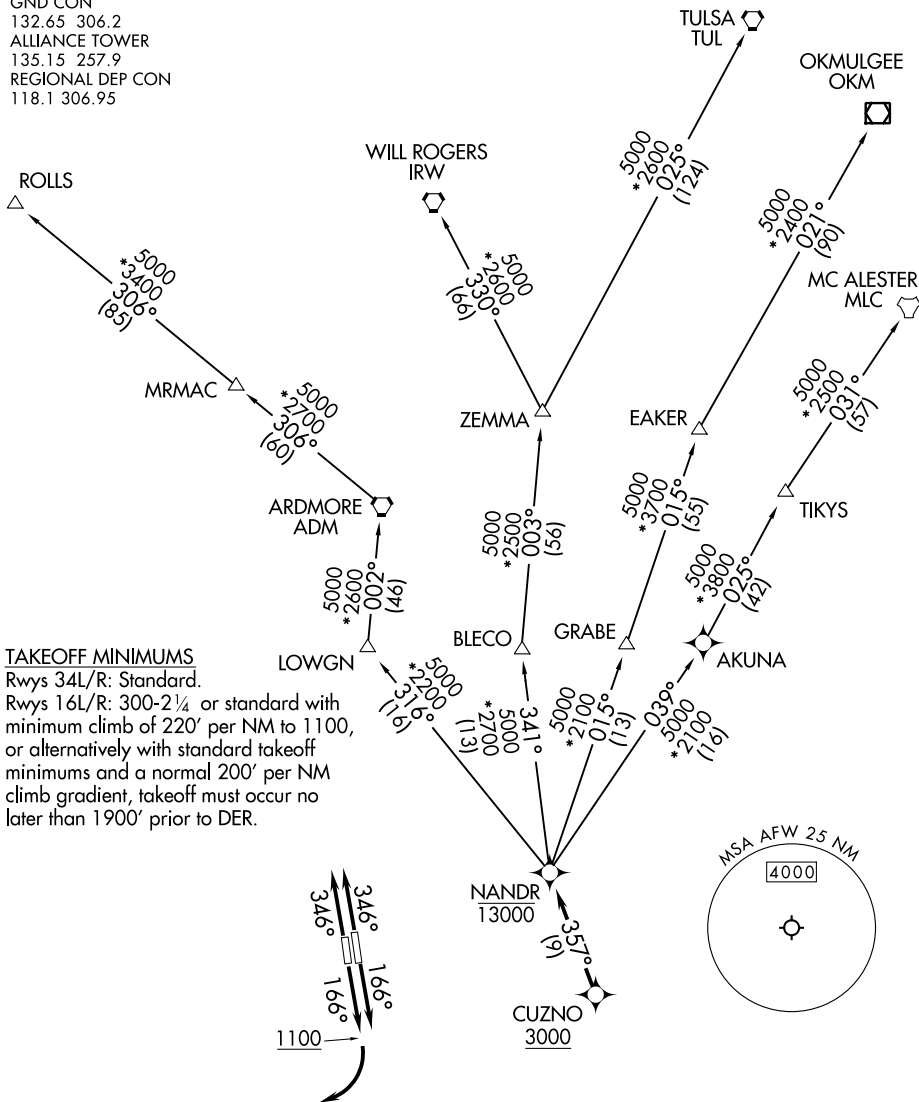
FORT WORTH, TEXAS

ATIS  
 126.925  
 CLNC DEL  
 128.725  
 GND CON  
 132.65 306.2  
 ALLIANCE TOWER  
 135.15 257.9  
 REGIONAL DEP CON  
 118.1 306.95

RNAV 1 - DME/DME/IRU or GPS.

RADAR required.

**TOP ALTITUDE:  
ASSIGNED BY ATC**



SC-2, 11 JUL 2024 to 08 AUG 2024

SC-2, 11 JUL 2024 to 08 AUG 2024

NOTE: EAKER transition: For TUL terminal arrivals only.  
 NOTE: TULSA transition: For all aircraft overflying TUL VORTAC.  
 NOTE: Aircraft arriving to the Oklahoma City terminal area, file and expect the ZEMMA enroute transition.

NOTE: Chart not to scale.

(NARRATIVE ON FOLLOWING PAGE)

# NANDR TWO DEPARTURE (RNAV)



DEPARTURE ROUTE DESCRIPTION

TAKEOFF RUNWAY 16L: Climb on heading 166° or as assigned by ATC, thence . . . .

TAKEOFF RUNWAY 16R: Climb on heading 166° to 1100 before turning right or as assigned by ATC, thence . . . .

TAKEOFF RUNWAYS 34L/R: Climb on heading 346° or as assigned by ATC, thence . . . .

. . . . expect RADAR vectors to cross CUZNO at or above 3000, then on track 357° to cross NANDR at or below 13000, then on assigned transition.

EAKER TRANSITION (NANDR2.EAKER)

MC ALESTER TRANSITION (NANDR2.MLC)

OKMULGEE TRANSITION (NANDR2.OKM)

ROLLS TRANSITION (NANDR2.ROLLS)

TULSA TRANSITION (NANDR2.TUL)

WILL ROGERS TRANSITION (NANDR2.IRW)

ZEMMA TRANSITION (NANDR2.ZEMMA)

SC-2, 11 JUL 2024 to 08 AUG 2024

SC-2, 11 JUL 2024 to 08 AUG 2024