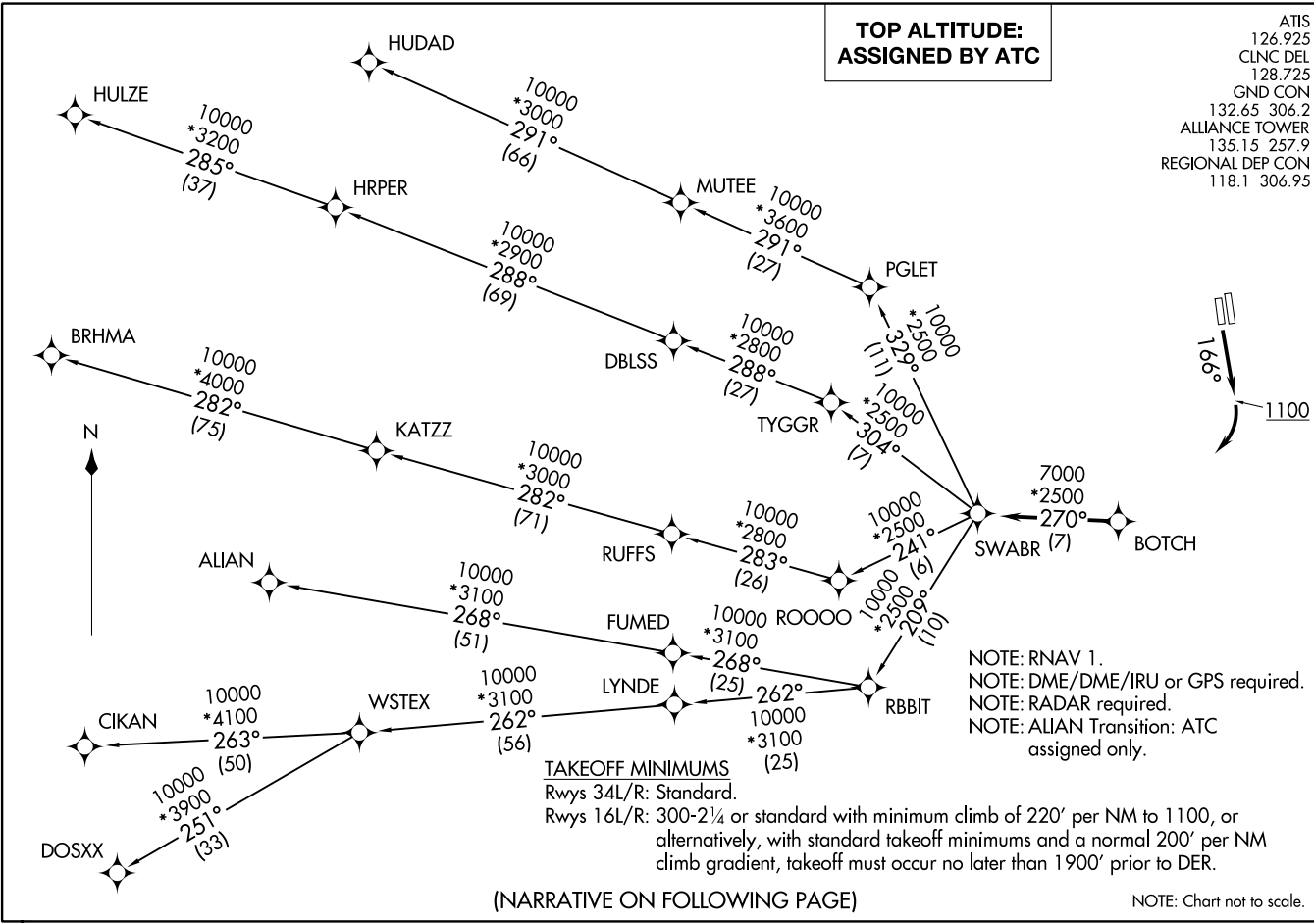


ATIS 126.925
 CLNC DEL 128.725
 GND CON 132.65 306.2
 ALLIANCE TOWER 135.15 257.9
 REGIONAL DEP CON 118.1 306.95

(SWABR1 .SWABR) 22251
 AL-6918 (FAA)
 PEROT FLD./FORT WORTH ALLIANCE (AFTW)
 FORT WORTH, TEXAS

**TOP ALTITUDE:
 ASSIGNED BY ATC**



(NARRATIVE ON FOLLOWING PAGE)

SWABR ONE DEPARTURE (RNAV)
 (SWABR1 .SWABR) 24MAR22
 FORT WORTH, TEXAS
 PEROT FLD./FORT WORTH ALLIANCE (AFTW)

SWABR ONE DEPARTURE (RNAV)



DEPARTURE ROUTE DESCRIPTION

TAKEOFF RUNWAY 16R: Climb on heading 166° to 1100 before turning right.

When entering controlled airspace, fly heading assigned by ATC, expect vectors to BOTCH, then on track 270° to SWABR, then on assigned transition. Maintain ATC assigned altitude, expect filed altitude 10 minutes after departure.

ALIAN TRANSITION (SWABR1.ALIAN)

BRHMA TRANSITION (SWABR1.BRHMA)

CIKAN TRANSITION (SWABR1.CIKAN)

DOSXX TRANSITION (SWABR1.DOSXX)

HUDAD TRANSITION (SWABR1.HUDAD)

HULZE TRANSITION (SWABR1.HULZE)

WSTEX TRANSITION (SWABR1.WSTEX)

SC-2, 11 JUL 2024 to 08 AUG 2024

SC-2, 11 JUL 2024 to 08 AUG 2024