

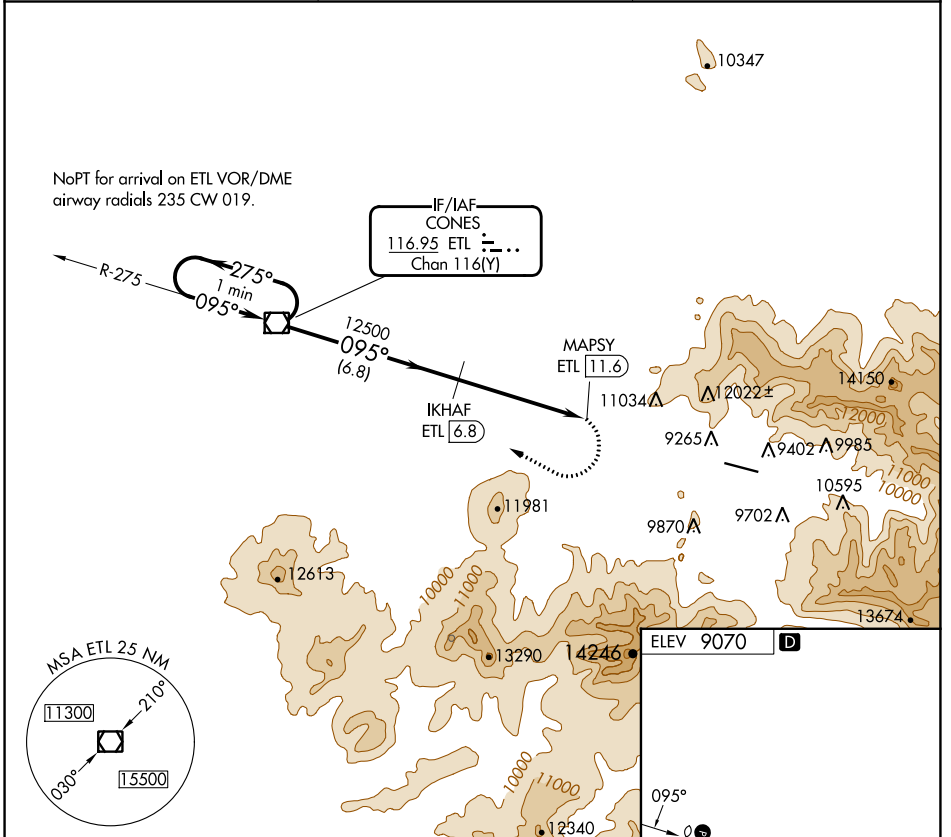
VOR/DME ETL 116.95 Chan 116(Y)	APP CRS 095°	Rwy Idg TDZE Apt Elev N/A N/A 9070
--	------------------------	---

VOR/DME-A

TELLURIDE RGNL (TEX)

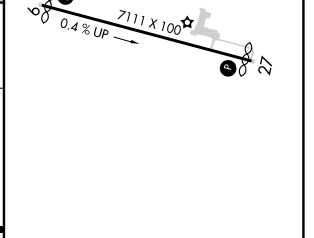
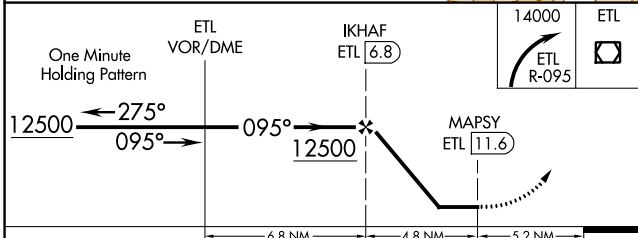
<p>Circling NA north of Rwy 9-27. Procedure NA at night.</p>	<p>MISSED APPROACH: Immediate climbing right turn to 14000 via ETL VOR/DME R-095 to ETL VOR/DME and hold.</p>
--	---

AWOS-3 118.325	DENVER CENTER 125.35 354.05	UNICOM 123.0 (CTAF)
--------------------------	---------------------------------------	-------------------------------



SW-1, 11 JUL 2024 to 08 AUG 2024

SW-1, 11 JUL 2024 to 08 AUG 2024



CATEGORY	A	B	C	D
CIRCLING	12420-6	3350 (3400-6)	NA	

HIRL Rwy 9-27
REIL Rwys 9 and 27