

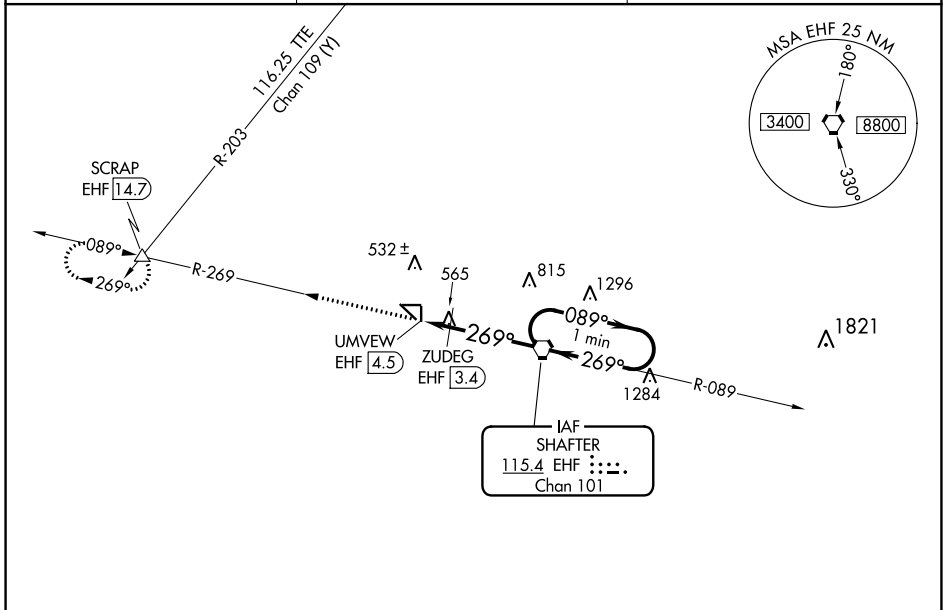
VORTAC EHF 115.4 Chan 101	APP CRS 269°	Rwy Idg TDZE Apt Elev	N/A N/A 425
---	------------------------	-----------------------------	--

VOR-A
SHAFTER-MINTER FLD (MIT)

NA Circling to Rwy 17, 35, 8 and 26 NA at night. When local altimeter setting not received, use Bakersfield altimeter setting and increase all MDAS 40 feet and increase Cat C visibility to 1 3/4.

MISSED APPROACH: Climb to 4000 on EHF VORTAC R-269 to SCRAP INT/EHF 14.7 DME and hold, continue climb-in-hold to 4000.

AWOS-3 121.125	BAKERSFIELD APP CON * 126.45 270.3	CTAF 122.9
--------------------------	--	----------------------



SW-3, 11 JUL 2024 to 08 AUG 2024

SW-3, 11 JUL 2024 to 08 AUG 2024

