

VORTAC CRP <b>115.5</b> Chan <b>102</b>	APP CRS <b>051°</b>	Rwy Idg TDZE Apt Elev <b>N/A</b> <b>N/A</b> <b>80</b>
---	------------------------	--

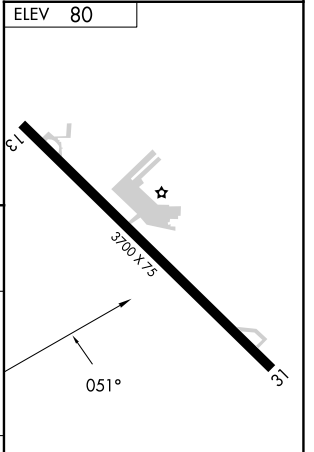
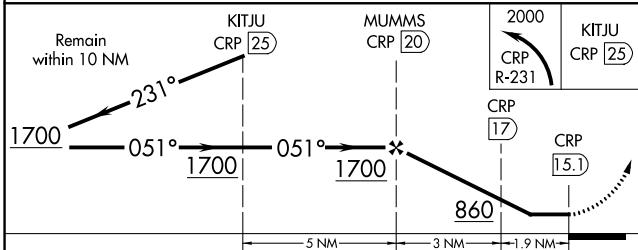
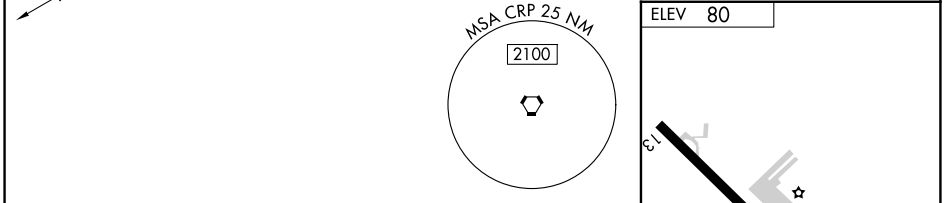
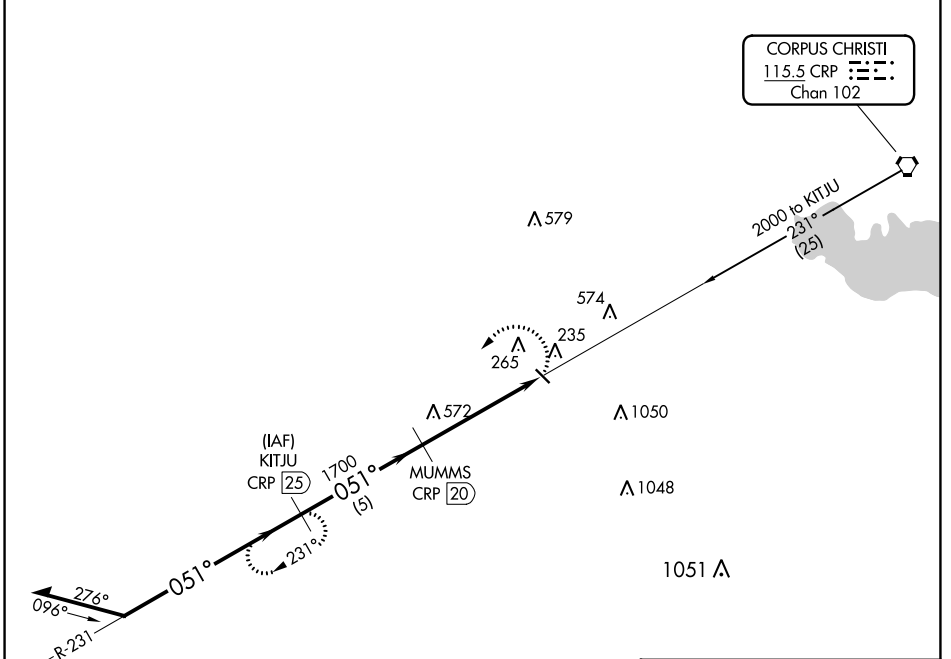
# VOR/DME-A

NUECES COUNTY (RBO)

**NA** When local altimeter setting not received, use Corpus Christi Intl altimeter setting. Circling not authorized northeast of Rwy 13-31.

MISSED APPROACH: Climbing left turn to 2000 via CRP R-231 to KITJU/CRP 25 DME and hold.

AWOS-3 <b>118.175</b>	KINGSVILLE APP CON * <b>119.9 290.45</b>	CTAF <b>122.9</b>	<b>122.8</b> <b>0</b>
--------------------------	---	----------------------	-----------------------



CATEGORY	A	B	C	D
<b>C</b> CIRCLING	660-1	580 (600-1)	NA	NA

MIRL Rwy 13-31 **0**

SC-3, 11 JUL 2024 to 08 AUG 2024

SC-3, 11 JUL 2024 to 08 AUG 2024