

|                                 |                        |   |
|---------------------------------|------------------------|---|
| WAAS<br>CH <b>99419</b><br>W01A | APP CRS<br><b>014°</b> | Rwy Idg<br>TDZE <b>495</b><br>Apt Elev <b>497</b> |
|---------------------------------|------------------------|---|

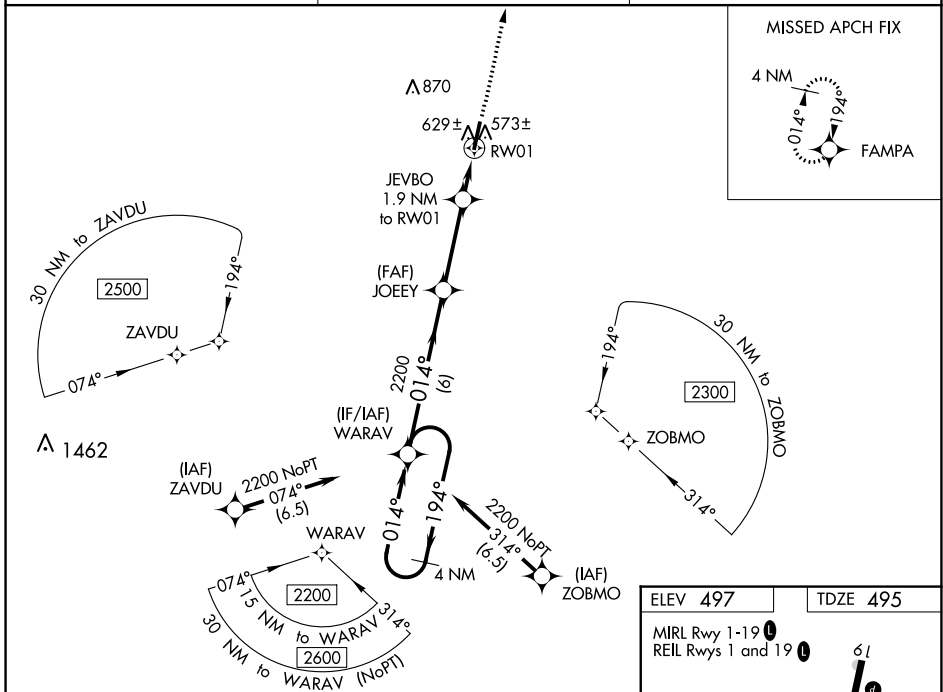
# RNAV (GPS) RWY 1

CARROLL COUNTY (HZD)

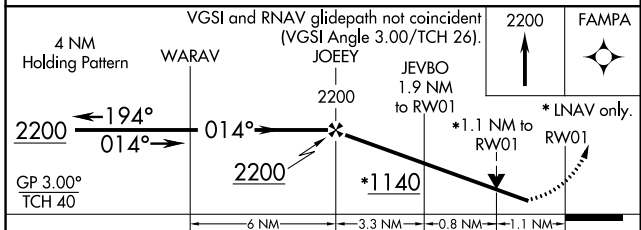
**⚠** For uncompensated Baro-VNAV systems, LNAV/VNAV NA below -15°C (5°F) or above 54°C (130°F). DME/DME RNP-0.3 NA. When local altimeter setting not received, use Mc Kellar-Sipes Rgnl altimeter setting and increase all DA 94 feet and all MDA 100 feet; increase LPV all Cats visibility ¼ mile, LNAV/VNAV all Cats visibility ⅓ mile, LNAV Cats C and D visibility ½ mile, and Circling Cats C and D visibility ½ mile. VDP and Baro-VNAV NA with Mc Kellar-Sipes Rgnl altimeter setting. Helicopter visibility reduction below ¼ SM NA.

**MISSED APPROACH:** Climb to 2200 direct FAMP A and hold.

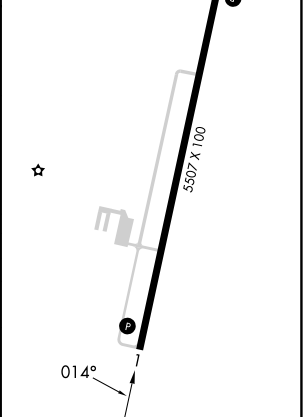
|                          |  |                               |
|--------------------------|--|-------------------------------|
| AWOS-3<br><b>133.275</b> | MEMPHIS CENTER<br><b>134.65 316.15</b> | UNICOM<br><b>122.8 (CTAF)</b> |
|--------------------------|--|-------------------------------|



|               |                   |
|---------------|-------------------|
| ELEV 497      | TDZE 495          |
| MIRL Rwy 1-19 | REIL Rwy 1 and 19 |



| CATEGORY          | A     | B           | C                     | D                             |
|-------------------|-------|-------------|-----------------------|-------------------------------|
| LPV DA            |       | 745-7/8     | 250 (300-7/8)         |                               |
| LNAV/VNAV DA      |       | 810-1       | 315 (400-1)           |                               |
| LNAV MDA          | 880-1 | 385 (400-1) | 880-1 1/8             | 385 (400-1 1/8)               |
| <b>C</b> CIRCLING | 980-1 | 483 (500-1) | 1220-2<br>723 (800-2) | 1220-2 1/4<br>723 (800-2 1/4) |



SE-1, 11 JUL 2024 to 08 AUG 2024

SE-1, 11 JUL 2024 to 08 AUG 2024