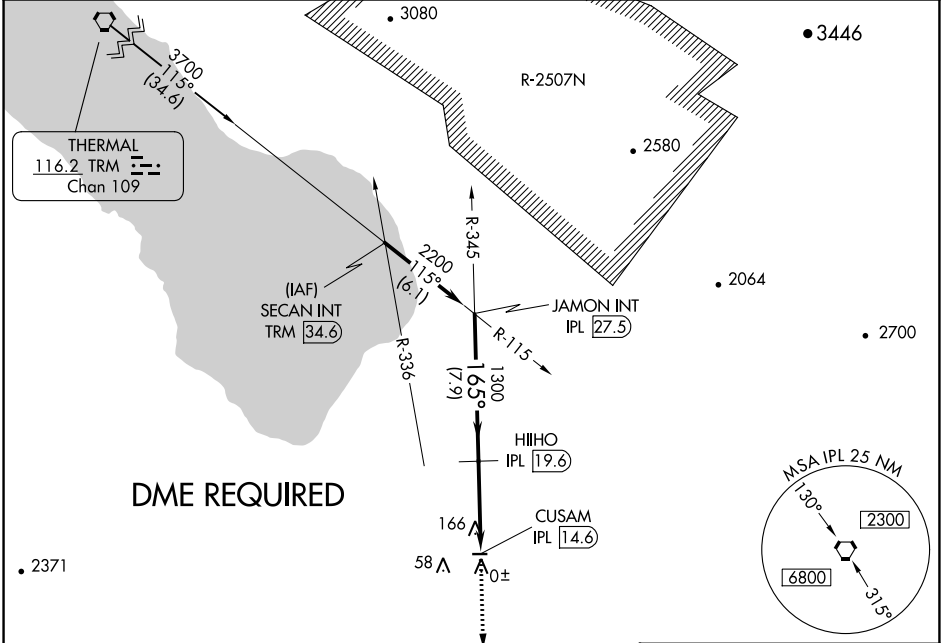


VORTAC IPL <b>115.9</b> Chan <b>106</b>	APP CRS <b>165°</b>	Rwy Idg TDZE Apt Elev	<b>N/A</b> <b>N/A</b> <b>-129</b>
---	------------------------	-----------------------------	---

**VOR-B**  
BRAWLEY MUNI (BWC)

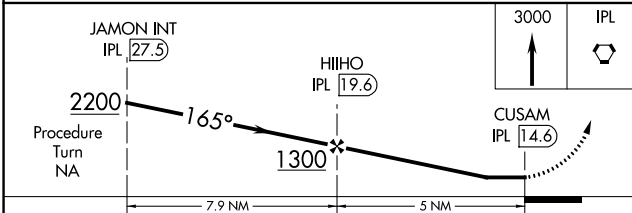
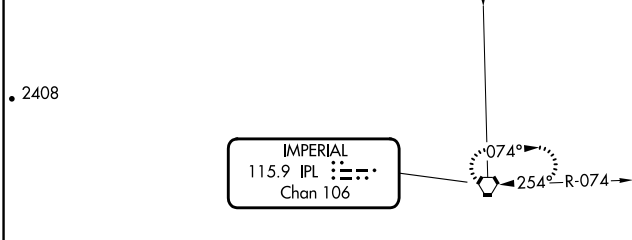
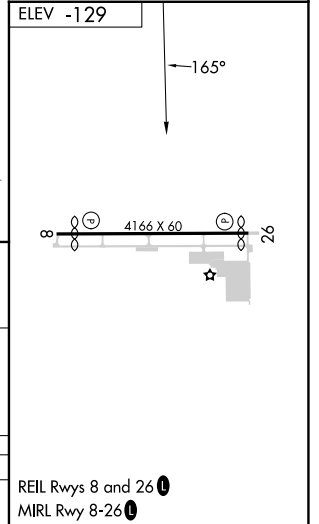
<p>▼ Use Imperial County altimeter setting. DME Required.</p> <p>▲ NA Circling Rwy 8 NA at night.</p>	MISSED APPROACH: Climb to 3000 direct IPL VORTAC and hold.
---	--

IPL ASOS <b>132.175</b>	YUMA CERAP <b>128.55 292.2</b>	CTAF <b>122.9</b>
----------------------------	-----------------------------------	----------------------



**DME REQUIRED**

IMPERIAL  
115.9 IPL  
Chan 106



CATEGORY	A	B	C	D
CIRCLING	560-1	689 (700-1)		NA

REIL Rwys 8 and 26  
MIRL Rwy 8-26

SW-3, 11 JUL 2024 to 08 AUG 2024

SW-3, 11 JUL 2024 to 08 AUG 2024