

WAAS CH <b>82017</b> <b>W17A</b>	APP CRS <b>172°</b>	Rwy Idg <b>4000</b> TDZE <b>1040</b> Apt Elev <b>1040</b>
--	------------------------	---

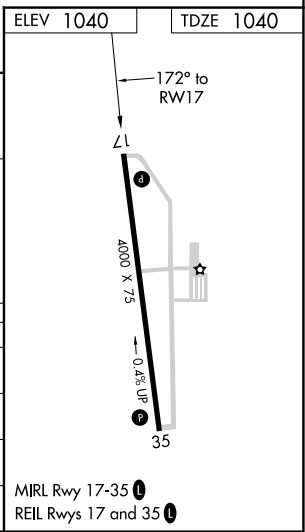
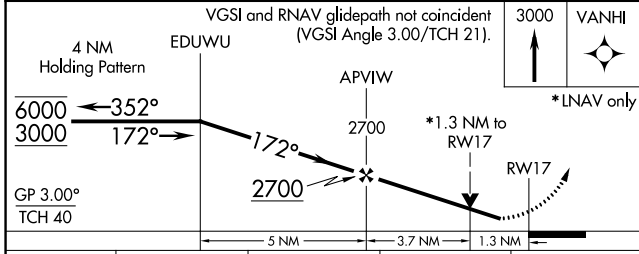
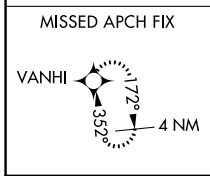
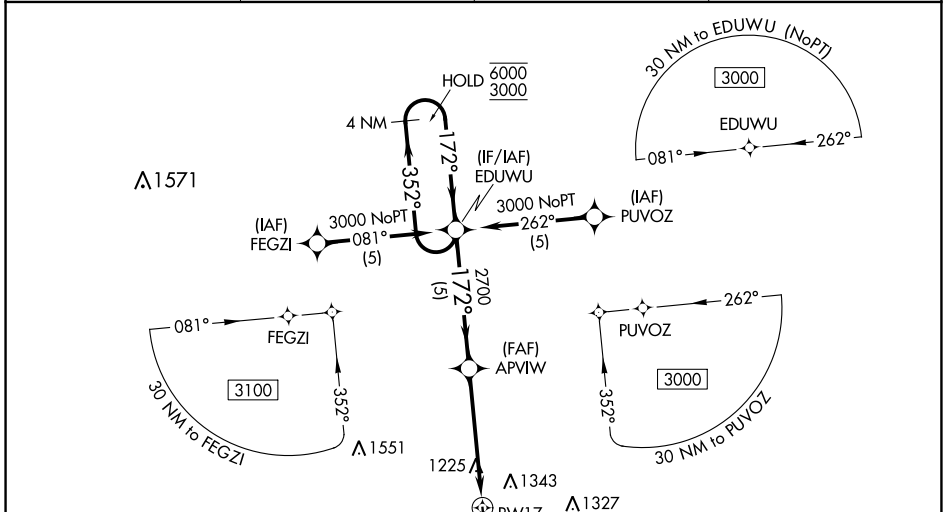
# RNAV (GPS) RWY 17

CAMERON MEML (EZZ)

RNP APCH.  
 ▼ Rwy 17 helicopter visibility reduction below 3/4 SM NA.  
 For uncompensated Baro-VNAV systems, LNAV/VNAV NA below -17°C or above 54°C.

MISSED APPROACH: Climb to 3000 direct VANHI and hold.

AWOS-3 <b>121.05</b>	KANSAS CITY APP CON <b>118.4 307.35</b>	CLNC DEL <b>121.6</b>	UNICOM <b>122.8 (CTAF) ①</b>
-------------------------	--	--------------------------	---------------------------------



CATEGORY	A	B	C	D
LPV DA	1290-3/4	250 (300-3/4)		NA
LNAV/VNAV DA	1518-13/8	478 (500-13/8)		NA
LNAV MDA	1480-1	440 (500-1)		NA
CIRCLING	1660-1	620 (700-1)		NA

NC-3, 11 JUL 2024 to 08 AUG 2024

NC-3, 11 JUL 2024 to 08 AUG 2024