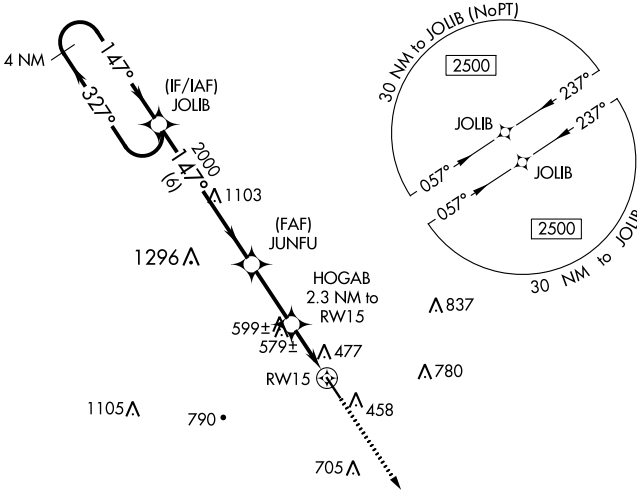


WAAS CH 49234 W15A	APP CRS 147°	Rwy Idg TDZE Apt Elev	5003 392 392
----------------------------------------	------------------------	-----------------------------	-----------------------------------------

RNAV (GPS) RWY 15

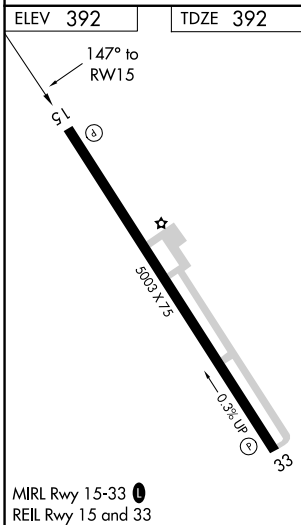
BOONEVILLE/BALDWIN (8M1)

RNP APCH.		MISSED APPROACH: Climb to 2500 direct MANIL and hold.
<p>Baro-VNAV NA. Use Corinth altimeter setting, when not received use Tupelo altimeter setting and increase all DA 4 feet, and all MDA 20 feet. Rwy 15 helicopter visibility reduction below 3/4 SM NA.</p>		
CRX AWOS-3PT 118.675	MEMPHIS CENTER 135.9 273.55	UNICOM 122.8 (CTAF) 0



SC-4, 11 JUL 2024 to 08 AUG 2024

SC-4, 11 JUL 2024 to 08 AUG 2024



VGSI and RNAV glidepath not coincident (VGSI Angle 3.00/TCH 40).

4 NM Holding Pattern	JOLIB	JUNFU	HOGAB	RWY 15
2500	2000	2000	2000	2000
GP 3.00° TCH 55	6 NM	2.6 NM	2.3 NM	
327°	147°	147°		
			1160	
				2500 MANIL
				*LNAV only.

CATEGORY	A	B	C	D
LPV DA		777-1¼	385 (400-1¼)	
LNAV/VNAV DA		842-1½	450 (500-1½)	
LNAV MDA		880-1 488 (500-1)	880-1¾ 488 (500-1¾)	