

WAAS CH <b>65923</b> <b>W23A</b>	APP CRS <b>227°</b>	Rwy Idg TDZE <b>1218</b> Apt Elev <b>1219</b>	<b>5003</b>
--	------------------------	---	-------------

# RNAV (GPS) RWY 23

CHEROKEE COUNTY RGNL (CNI)

RNP APCH.

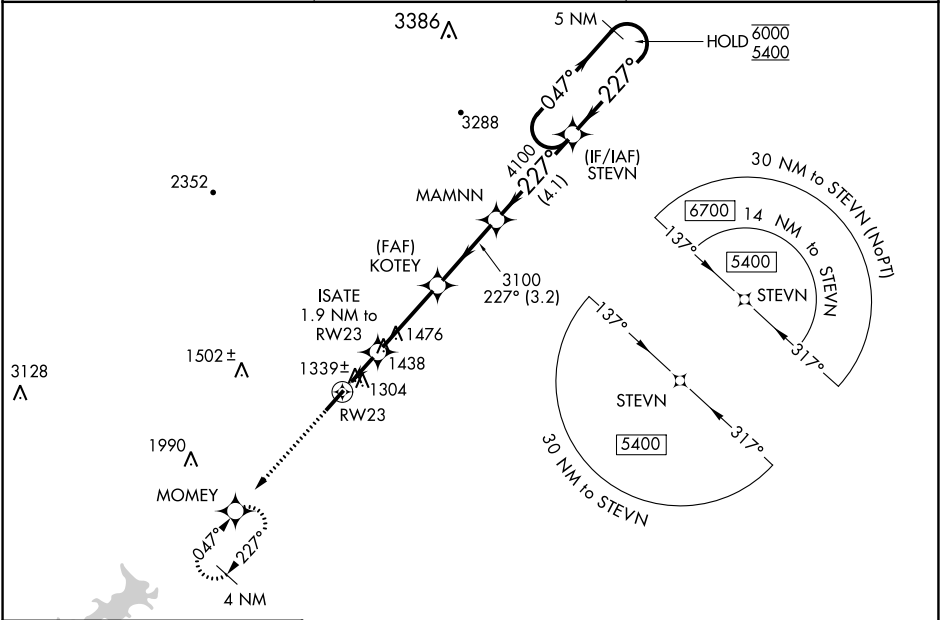
**⚠** Rwy 23 helicopter visibility reduction below 1 SM NA. When local altimeter setting not received, use Marietta altimeter setting and increase all MDA 80 feet; Increase LP and Circling Cat C visibility  $\frac{1}{4}$  SM and LNAV Cat C visibility  $\frac{1}{8}$  SM. Straight-in Rwy 23 NA at night, Circling Rwy 23 NA at night.

**MISSED APPROACH:** Climb to 4000 direct MOMEY and hold, continue climb-in-hold to 4000.

AWOS-3PT  
**119.825**

ATLANTA APP CON  
**121.0 268.7**

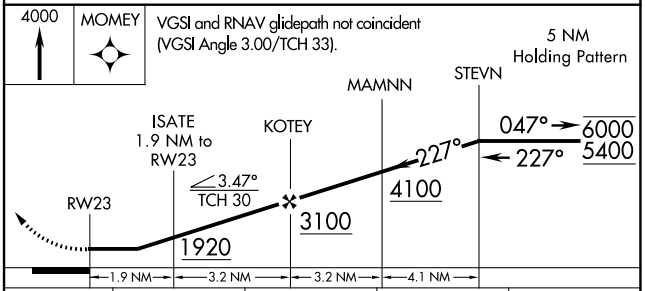
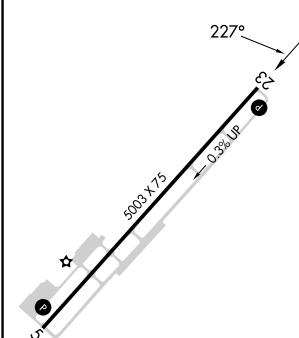
UNICOM  
**123.0 (CTAF)**



SE-4, 11 JUL 2024 to 08 AUG 2024

SE-4, 11 JUL 2024 to 08 AUG 2024

ELEV 1219	TDZE 1218
-----------	-----------



CATEGORY	A	B	C	D
LP MDA	1600-1	382 (400-1)	1600-1 $\frac{1}{8}$ 382 (400-1 $\frac{1}{8}$ )	NA
LNAV MDA	1740-1	522 (600-1)	1740-1 $\frac{1}{8}$ 522 (600-1 $\frac{1}{8}$ )	NA
<b>C</b> CIRCLING	1740-1	521 (600-1)	1820-1 $\frac{3}{4}$ 601 (700-1 $\frac{3}{4}$ )	NA

REIL Rwy 5 and 23  
MIRL Rwy 5-23