

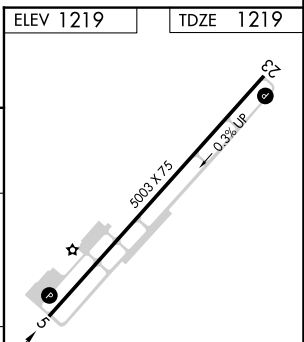
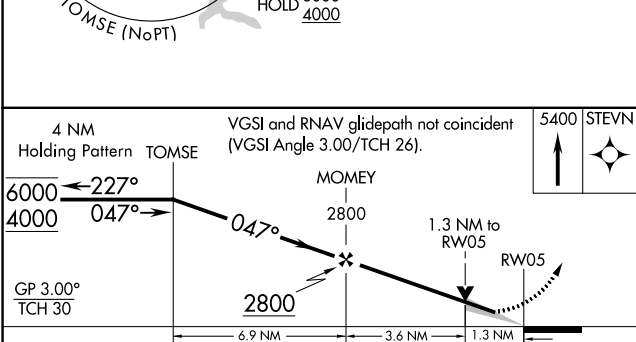
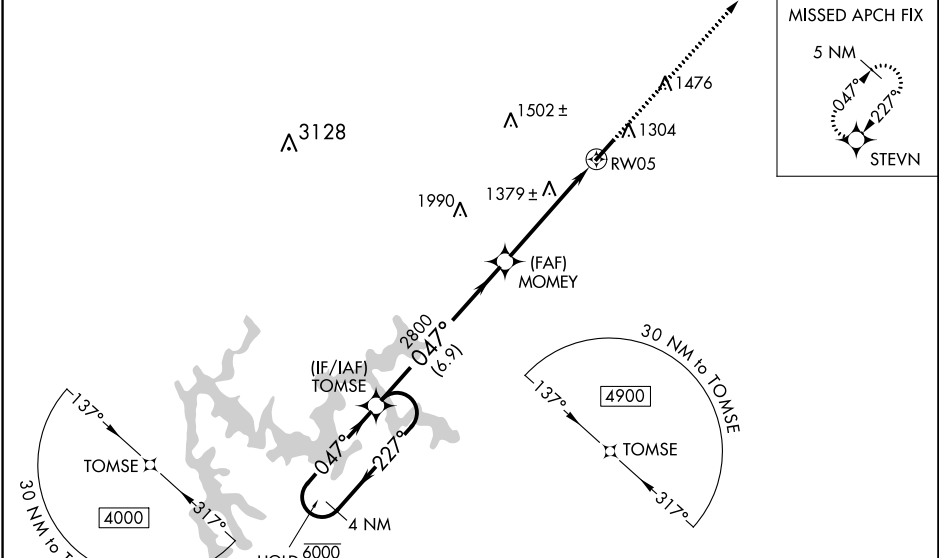
WAAS CH 56605 W05A	APP CRS 047°	Rwy Idg 5003 TDZE 1219 Apt Elev 1219
--	------------------------	---

RNAV (GPS) RWY 5

CHEROKEE COUNTY RGNL (CNI)

RNP APCH-GPS.	<p>MISSED APPROACH: Climb to 5400 direct STEVN and hold, continue climb-in-hold to 5400.</p>
<p>▼ Circling Rwy 23 NA at night. Baro-VNAV and VDP NA when using Marietta altimeter setting. ▲ For uncompensated Baro-VNAV systems, LNAV/VNAV NA below -17°C or above 36°C. ▲ When local altimeter setting not received, use Marietta altimeter setting and increase LPV DA to 1546 feet and visibility all Cats 1/8 SM; increase LNAV/VNAV DA to 1631 feet; increase all MDAs 80 feet and LNAV Cats C/D visibility 1/8 SM and Circling Cats C/D visibility 1/4 SM.</p>	

AWOS-3PT 119.825	ATLANTA APP CON 121.0 268.7	UNICOM 123.0 (CTAF) 0
----------------------------	---------------------------------------	---------------------------------



CATEGORY	A	B	C	D
LPV DA		1469-7/8	250 (300-7/8)	
LNAV/VNAV DA		1554-1 1/8	335 (400-1 1/8)	
LNAV MDA	1640-1	421 (500-1)	1640-1 1/4	421 (500-1 1/4)
C CIRCLING	1720-1	501 (600-1)	1820-1 3/4	2040-2 3/4
			601 (700-1 1/4)	821 (900-2 3/4)

REIL Rwy 5 and 23 **0**
MIRL Rwy 5-23 **0**

SE-4, 11 JUL 2024 to 08 AUG 2024

SE-4, 11 JUL 2024 to 08 AUG 2024