

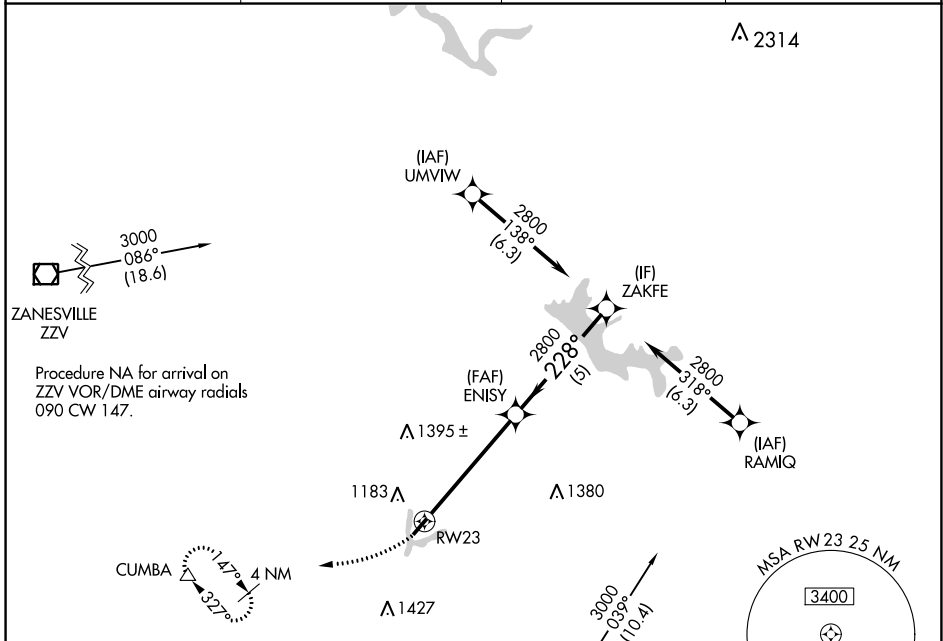
WAAS CH <b>48841</b> <b>W23A</b>	APP CRS <b>228°</b>	Rwy Idg <b>3398</b> TDZE <b>878</b> Apt Elev <b>879</b>
--	------------------------	---

# RNAV (GPS) RWY 23

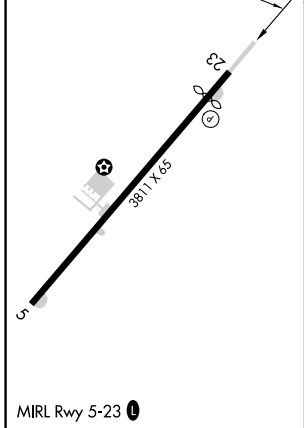
NOBLE COUNTY (I10)

**⚠** Rwy 23 helicopter visibility reduction below 1 SM NA.  
**⚠** DME/DME RNP-0.3 NA. Procedure NA at night. Use Zanesville altimeter setting; when not received, procedure NA.  
 MISSED APPROACH: Climbing right turn to 3000 direct to CUMBA and hold.

ZZV ASOS <b>114.95</b>	INDIANAPOLIS CENTER <b>124.45 323.275</b>	UNICOM <b>122.8</b> (CTAF)	<b>122.7</b> <b>0</b>
---------------------------	--	-------------------------------	-----------------------



ELEV 879	TDZE 878
----------	----------



3000 CUMBA Visual Segment - Obstacles.		ENISY		ZAKFE	
RWY 23		2800		2800	
5 NM		5 NM			
CATEGORY	A	B	C	D	
LP MDA	1580-1	702 (800-1)	1580-2 702 (800-2)	NA	
LNAV MDA	1620-1 742 (800-1)	1620-1¼ 742 (800-1¼)	1620-2 742 (800-2)	NA	
<b>C</b> CIRCLING	1620-1	741 (800-1)	1660-2¼ 781 (800-2¼)	NA	

EC-2, 11 JUL 2024 to 08 AUG 2024

EC-2, 11 JUL 2024 to 08 AUG 2024