

WAAS CH 86238 W05A	APP CRS 049°	Rwy Idg TDZE Apt Elev	5001 85 90
--	------------------------	-----------------------------	---------------------------------------

RNAV (GPS) RWY 5

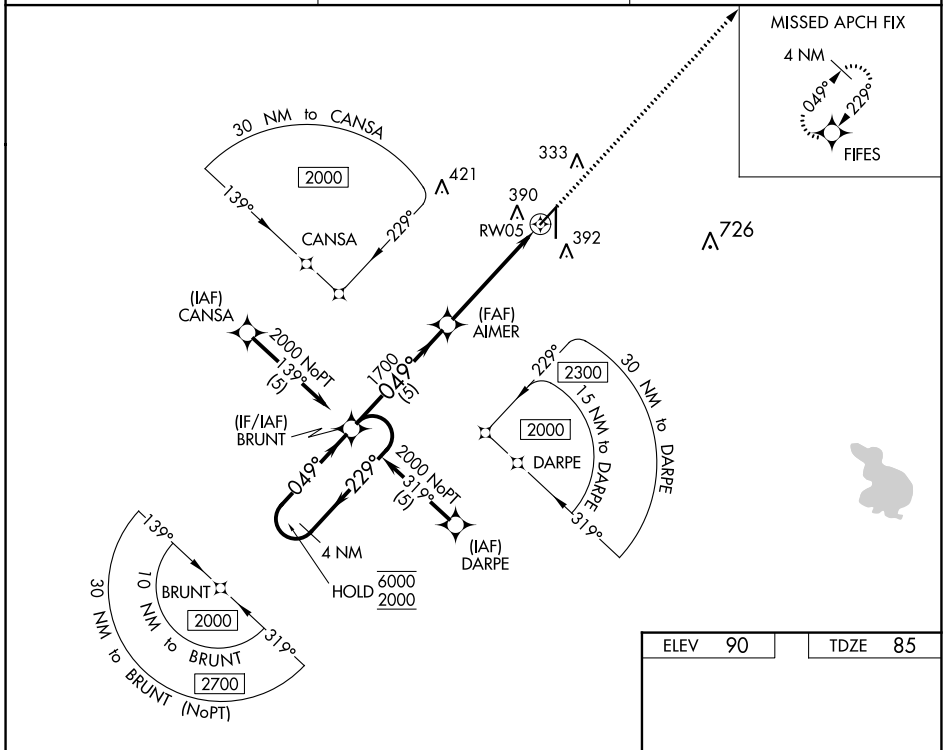
ZEPHYRHILLS MUNI (ZPH)

RNP APCH.

⚠ Rwy 5 helicopter visibility reduction below $\frac{3}{4}$ SM NA.
For uncompensated Baro-VNAV systems, LNAV/VNAV NA below -15°C or above 54°C.

MISSED APPROACH: Climb to 2000 direct FIFES and hold.

AWOS-3PT 118.975	TAMPA APP CON 119.9 290.3	UNICOM 123.075 (CTAF) 📻
----------------------------	-------------------------------------	--



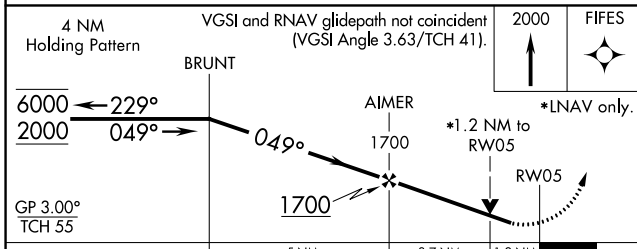
SE-3, 11 JUL 2024 to 08 AUG 2024

SE-3, 11 JUL 2024 to 08 AUG 2024

ELEV 90	TDZE 85
---------	---------

Diagram showing the runway layout with RWY 5, RWY 19, and RWY 23. Dimensions are given as 5003 x 100 and 6201 x 100. A 049° heading is indicated.

MIRL Rwy 5-23 **📻**
HIRL Rwy 1-19 **📻**
REIL Rwys 1 and 19 **📻**



CATEGORY	A	B	C	D
LPV DA	373-1	288 (300-1)		NA
LNAV/VNAV DA	582-1 $\frac{1}{8}$	497 (500-1 $\frac{1}{8}$)		NA
LNAV MDA	600-1	515 (600-1)		NA
📻 CIRCLING	740-1	650 (700-1)		NA