

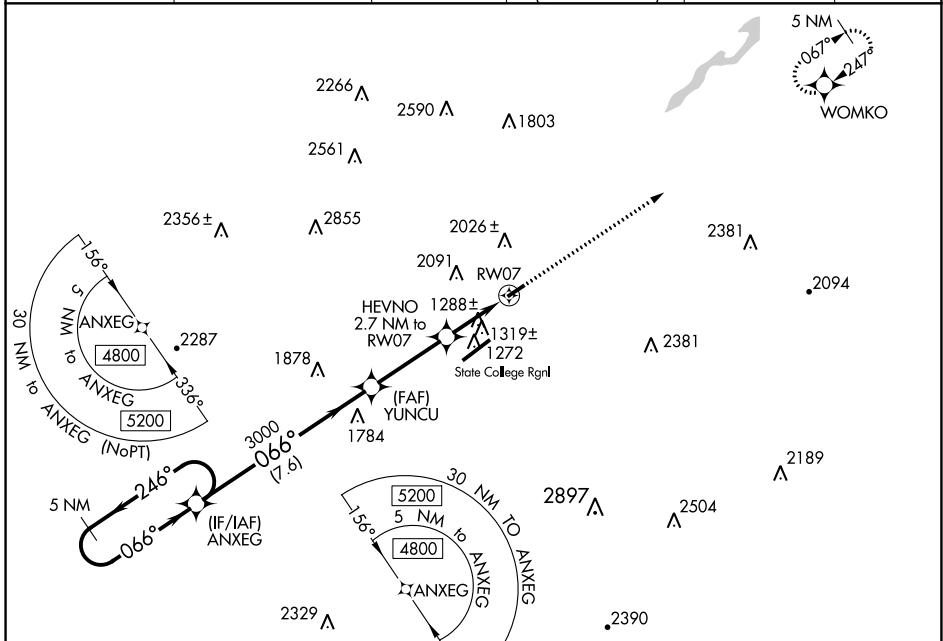
WAAS CH <b>42534</b> <b>W07A</b>	APP CRS <b>066°</b>	Rwy ldg <b>3632</b> TDZE <b>1072</b> Apt Elev <b>1072</b>
--	------------------------	---

# RNAV (GPS) RWY 7

BELLEFONTE (N96)

<p><b>▼</b> DME/DME RNP-0.3 NA. Use State College altimeter setting, when not received use Clearfield altimeter setting and increase all MDA 140 feet.</p> <p><b>▲</b> NA Helicopter visibility reduction below 1 SM NA. Circling NA southeast of Rwy 7-25. Procedure NA at night.</p>	<p><b>MISSED APPROACH:</b> Climb to 4600 direct WOMKO and hold, continue climb-in-hold to 4600.</p>
--	---

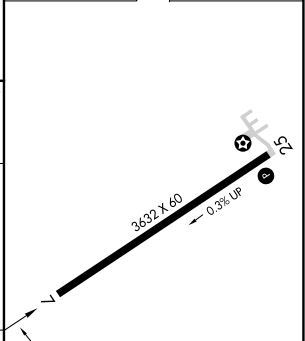
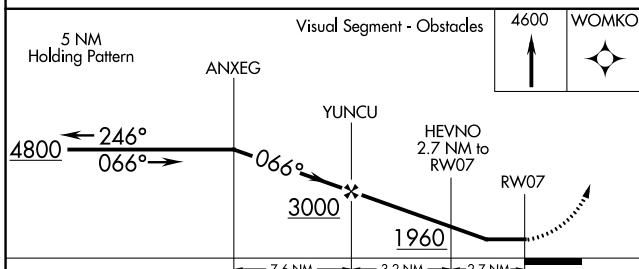
UNV AWOS-3 <b>127.65</b>	NEW YORK CENTER <b>134.8 338.3</b>	CLNC DEL <b>125.725</b>	CLNC DEL <b>118.55</b> (When twr closed)	UNICOM <b>122.8</b> (CTAF)	<b>122.7</b> <b>0</b>
-----------------------------	---------------------------------------	----------------------------	--	-------------------------------	-----------------------



NE-4, 11 JUL 2024 to 08 AUG 2024

NE-4, 11 JUL 2024 to 08 AUG 2024

ELEV 1072	TDZE 1072
-----------	-----------



CATEGORY	A	B	C	D
LP MDA	1540-1	468 (500-1)		NA
LNAV MDA	1580-1	508 (600-1)		NA
<b>C</b> CIRCLING	2140-1¼ 1068 (1100-1¼)	2380-1½ 1308 (1400-1½)		NA

LIRL Rwy 7-25 **0**