

HUGO, OKLAHOMA

AL-6979 (FAA)

19115

WAAS CH 86639 W35A	APP CRS 358°	Rwy Idg TDZE Apt Elev	4007 572 572
---------------------------------	------------------------	-----------------------------	---

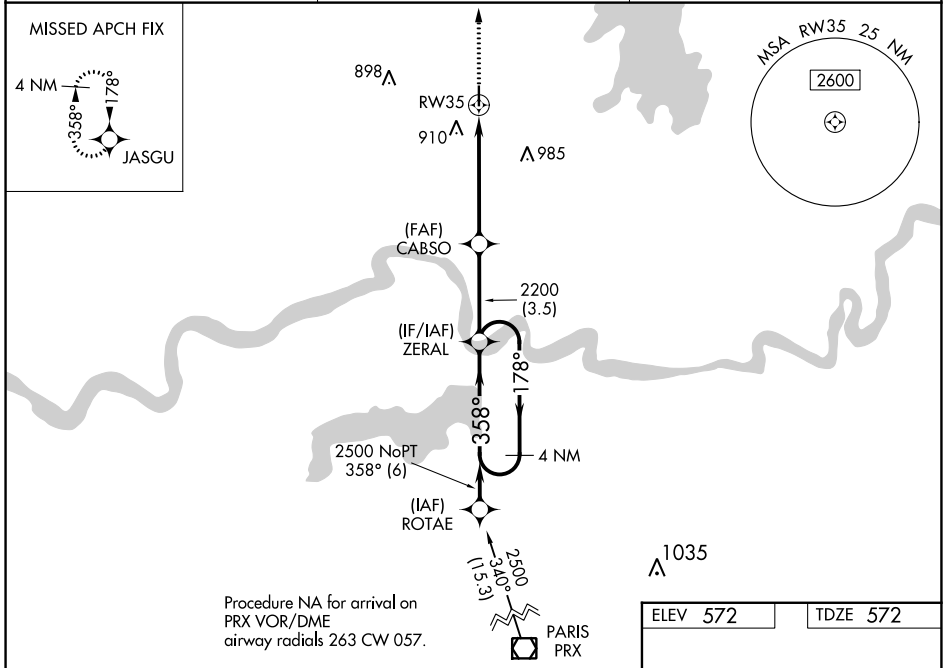
RNAV (GPS) RWY 35

STAN STAMPER MUNI (HHW)

For uncompensated Baro-VNAV systems, LNAV/VNAV NA below -1.6°C (4°F) or above 54°C (130°F). Rwy 35 helicopter visibility reduction below 1 SM NA. DME/DME RNP-0.3 NA. Straight-in Rwy 35 and Circling Rwy 35 NA at night.

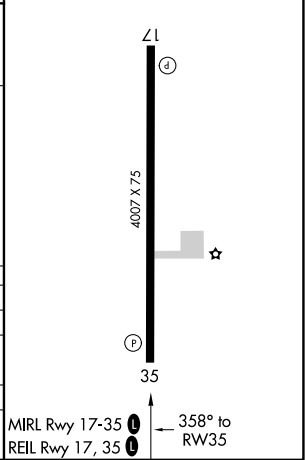
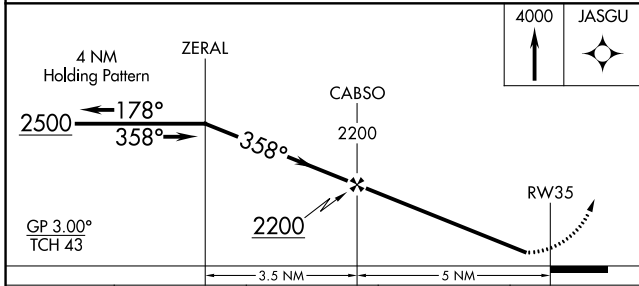
MISSED APPROACH: Climb to 4000 direct JASGU and hold, continue climb-in-hold to 4000.

AWOS-3 119.025	FORT WORTH CENTER 127.6 307.2	UNICOM 122.8 (CTAF) 0
--------------------------	---	---------------------------------



Procedure NA for arrival on PRX VOR/DME airway radials 263 CW 057.

ELEV 572	TDZE 572
----------	----------



CATEGORY	A	B	C	D
LPV DA		822-1	250 (300-1)	
LNAV/VNAV DA		1071-1 ³ / ₈	499 (500-1 ³ / ₈)	
LNAV MDA	1020-1	448 (500-1)	1020-1 ³ / ₈	448 (500-1 ³ / ₈)
C CIRCLING	1220-1	648 (700-1)	1340-2 ¹ / ₄ 768 (800-2 ¹ / ₄)	1340-2 ¹ / ₂ 768 (800-2 ¹ / ₂)

HUGO, OKLAHOMA
Amdt 1 29MAR18

34°02'N-95°33'W

RNAV (GPS) RWY 35

STAN STAMPER MUNI (HHW)

SC-1, 11 JUL 2024 to 08 AUG 2024

SC-1, 11 JUL 2024 to 08 AUG 2024