

WAAS CH <b>99644</b> <b>W18A</b>	APP CRS <b>180°</b>	Rwy Idg TDZE Apt Elev	<b>6001</b> <b>1316</b> <b>1316</b>
--	------------------------	-----------------------------	---

# RNAV (GPS) RWY 18

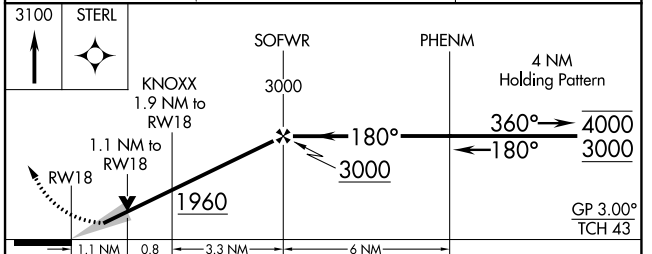
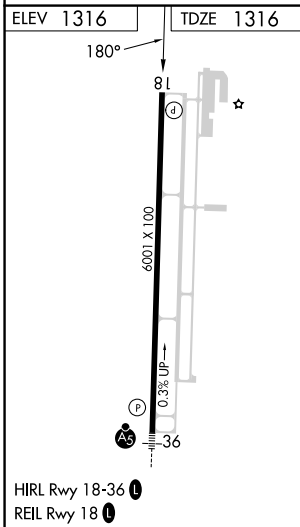
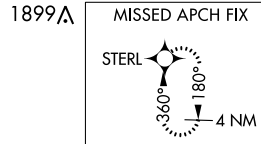
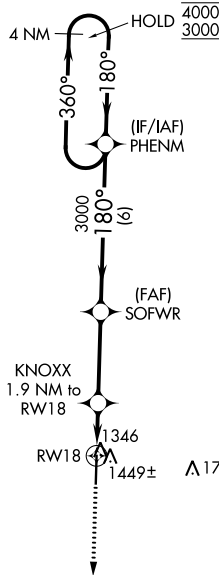
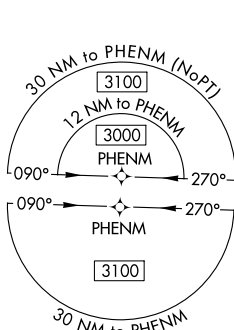
MONETT RGNL (HFJ)

RNP APCH - GPS.

**⚠** Baro-VNAV and VDP NA when using Joplin altimeter setting. For uncompensated Baro-VNAV systems, LNAV/VNAV NA below -17°C or above 54°C. When local altimeter setting not received, use Joplin altimeter setting; increase LPV DA to 1678 feet and all visibilities ¼ SM; increase LNAV/VNAV DA to 1742 feet and all visibilities ⅜ SM; increase all MDAs 120 feet and LNAV visibility Cat C/D ½ SM, and Circling visibility Cat C/D ½ SM.

MISSED APPROACH: Climb to 3100 direct STERL and hold.

AWOS-3 <b>118.275</b>	SPRINGFIELD APP CON <b>124.95 318.2</b>	CLNC DEL <b>121.85</b>	UNICOM <b>123.075 (CTAF)</b> <b>📻</b>
--------------------------	--	---------------------------	--



CATEGORY	A	B	C	D
LPV DA		1566-¾	250 (300-¾)	
LNAV/VNAV DA		1630-⅞	314 (400-⅞)	
LNAV MDA	1700-1	384 (400-1)	1700-1½	384 (400-1½)
<b>C</b> CIRCLING	1760-1 444 (500-1)	1900-1 584 (600-1)	1900-1½ 584 (600-1½)	2060-2½ 744 (800-2½)

NC-3, 11 JUL 2024 to 08 AUG 2024

NC-3, 11 JUL 2024 to 08 AUG 2024