

VOR/DME CPN 116.05 Chan 107 (Y)	APP CRS 309°	Rwy Idg TDZE N/A Apt Elev 5034
---	------------------------	---

VOR-A
BOWMAN FLD (3U3)

DME required.

▼
▲ NA
☉ -25°C

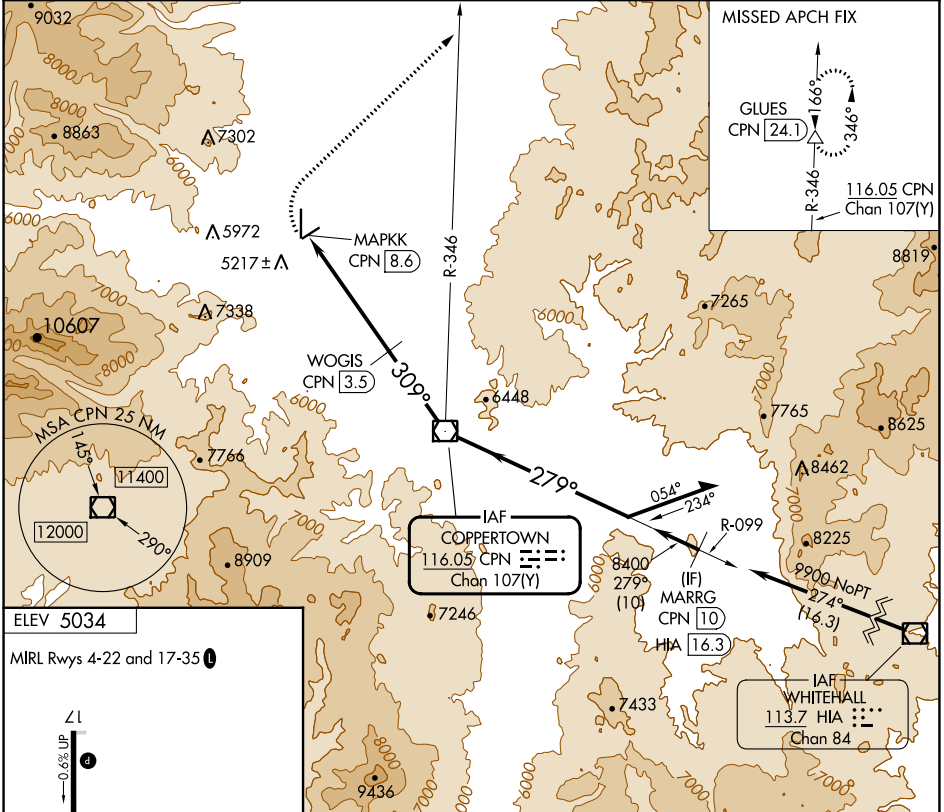
When local altimeter settings not received, use Butte altimeter setting and increase all MDAs 120 feet.
Circling NA for Cats C and D west of Rwy 17-35.

MISSED APPROACH: Climbing right turn to 9200 on heading 030° and on CPN VOR/DME R-346 to GLUES/CPN 24.1 DME and hold.

AWOS-AV
122.8

SALT LAKE CENTER
132.4 338.3

UNICOM
122.8 (CTAF)

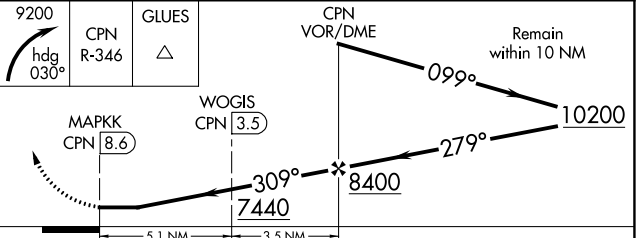
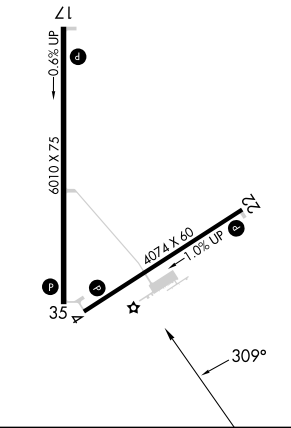


NW-1, 11 JUL 2024 to 08 AUG 2024

NW-1, 11 JUL 2024 to 08 AUG 2024

ELEV 5034

MIRL Rwys 4-22 and 17-35



CATEGORY	A	B	C	D
CIRCLING	6120-1¼ 1086 (1100-1¼)	6240-1½ 1206 (1300-1½)	6240-3	1206 (1300-3)