

RNAV (GPS) RWY 30

CROSBY MUNI (D50)

APP CRS	Rwy Idg	3800
304°	TDZE	1948
	Apt Elev	1950

RNP APCH

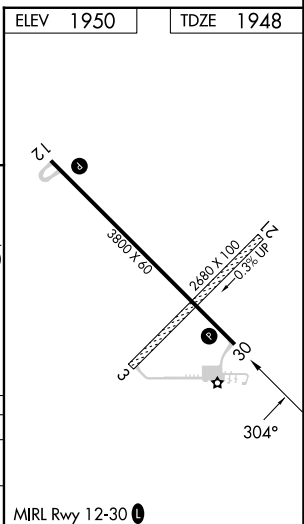
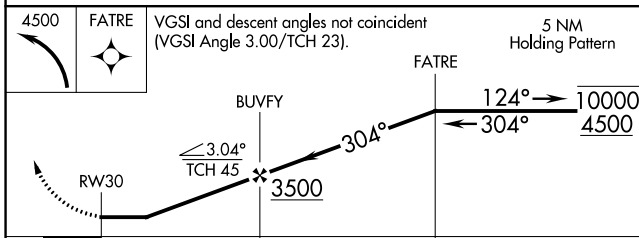
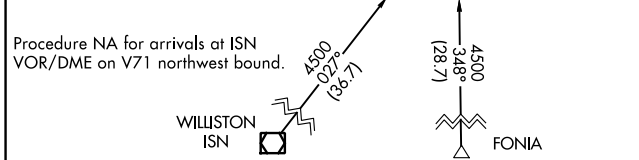
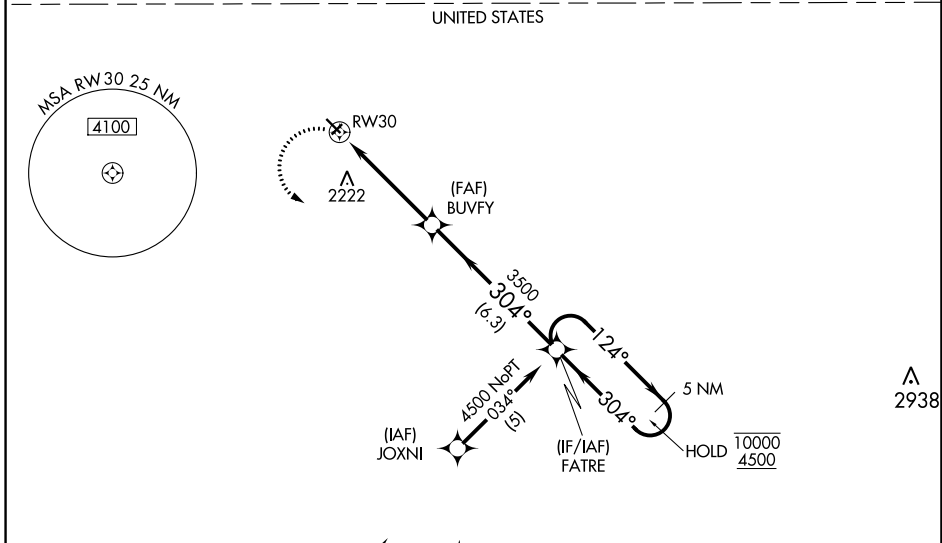
▼ Circling NA to Rwys 3 and 21. Circling Rwy 12 NA at night.
 ▲ Rwy 30 helicopter visibility reduction below 1 SM NA.

MISSED APPROACH: Climbing left turn to 4500 direct FATRE and hold.

AWOS-3
118.025

SALT LAKE CITY CENTER
126.85 305.2

CTAF
122.9 0



CATEGORY	A	B	C	D
LNVA MDA	2560-1	612 (700-1)	2560-1 ³ / ₄ 612 (700-1 ³ / ₄)	2560-2 612 (700-2)
◻ CIRCLING	2560-1	610 (700-1)	2560-1 ³ / ₄ 610 (700-1 ³ / ₄)	2640-2 ¹ / ₄ 690 (700-2 ¹ / ₄)

NC-1, 11 JUL 2024 to 08 AUG 2024

NC-1, 11 JUL 2024 to 08 AUG 2024