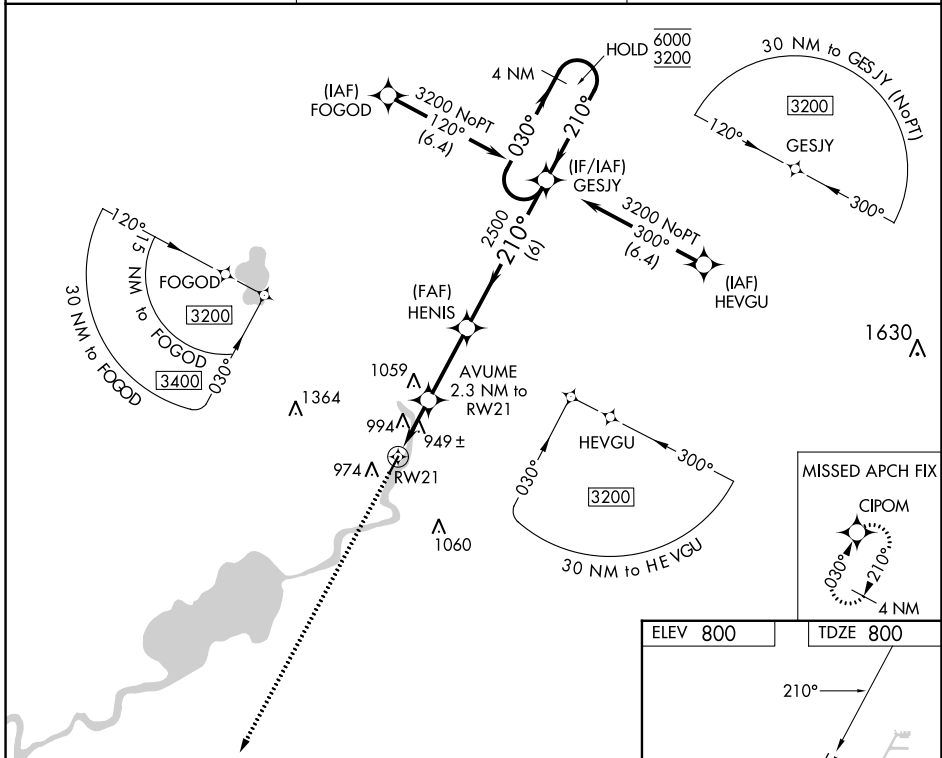


WAAS CH <b>45842</b> <b>W21A</b>	APP CRS <b>210°</b>	Rwy Idg TDZE Apt Elev	<b>3800</b> <b>800</b> <b>800</b>
--	------------------------	-----------------------------	---

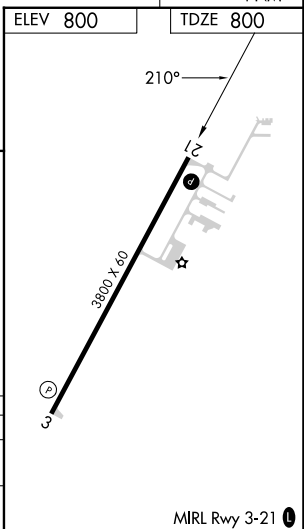
# RNAV (GPS) RWY 21

FORT ATKINSON MUNI (61C)

RNP APCH.		MISSED APPROACH: Climb to 3000 direct CIPOM and hold.
<p><b>NA</b> Rwy 21 helicopter visibility reduction below 3/4 SM NA. Use Watertown altimeter setting; when not received use Southern Wisconsin Rgnl altimeter setting and increase all MDA 20 feet, increase LP Cat C visibility 1/2 SM.</p>		
RVW AWOS-3 <b>119.975</b>	MADISON APP CON * <b>120.1 350.3</b>	CTAF <b>122.9</b>



3000	CIPOM	VGSi and descent angles not coincident (VGSi Angle 3.00/TCH 33)	
↑	✧	HENIS	GESJY
AVUME 2.3 NM to RWY 21			4 NM Holding Pattern
↙ 3.00° TCH 45		2500	030° → 6000 / ← 210° 3200
2.3 NM	2.9 NM	6 NM	
CATEGORY	A	B	C
LP MDA	1240-1	440 (500-1)	1240-1 1/4 440 (500-1 1/4)
LNAV MDA	1280-1	480 (500-1)	1280-1 3/8 480 (500-1 3/8)
			NA



EC-3, 11 JUL 2024 to 08 AUG 2024

EC-3, 11 JUL 2024 to 08 AUG 2024