

| | | | |
|--|------------------------|-----------------------------|---|
| WAAS CH 86733 W18A | APP CRS 176° | Rwy Idg TDZE Apt Elev | 5000 2238 2238 |
|--|------------------------|-----------------------------|---|

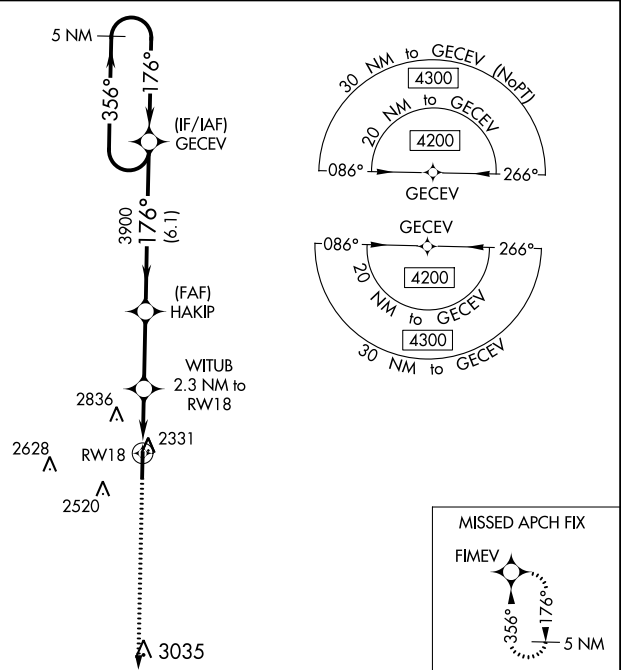
RNAV (GPS) RWY 18

HILL CITY MUNI (HLC)

⚠ For uncompensated Baro-VNAV systems, LNAV/VNAV NA below -24°C (-11°F) or above 54°C (130°F). Circling NA west of Rwy 18-36. DME/DME RNP-0.3 NA. When local altimeter setting not received, use Hays altimeter setting: Increase LPV DA to 2617 feet, LNAV/VNAV DA to 2630 feet, and visibility LPV all Cats ¼ mile, LNAV/VNAV all Cats ⅓ mile; Increase all MDA 140 feet and visibility LNAV Cat C ⅓ mile and Circling Cat C ¼ mile. Night landing: Rwy 18 NA. Helicopter visibility reduction below 1 SM NA. Baro-VNAV NA when using Hays altimeter setting.

MISSED APPROACH:
Climb to 4200 direct
FIMEV and hold.

| | | |
|------------------------|---------------------------------------|----------------------|
| ASOS 118.425 | DENVER CENTER 132.7 226.675 | CTAF 122.9 |
|------------------------|---------------------------------------|----------------------|



NC-2, 11 JUL 2024 to 08 AUG 2024

NC-2, 11 JUL 2024 to 08 AUG 2024

| | |
|-----------|-----------|
| ELEV 2238 | TDZE 2238 |
|-----------|-----------|

176° to RWY 18

81

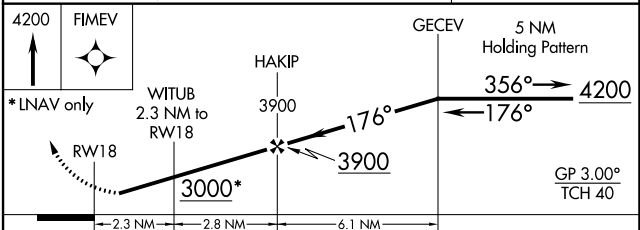
5000 X 75

1.0% UP

36

HILL CITY RWY 18-36

REIL RWYS 18 and 36



| CATEGORY | A | B | C | D |
|-------------------|-----------------------|-----------------------|-------------------------|----|
| LPV DA | 2488-1 | 250 (300-1) | | NA |
| LNAV/VNAV DA | 2501-1 | 263 (300-1) | | NA |
| LNAV MDA | 2600-1 | 362 (400-1) | | NA |
| C CIRCLING | 2640-1 402 (500-1) | 2700-1 462 (500-1) | 2700-1½ 462 (500-1½) | NA |