

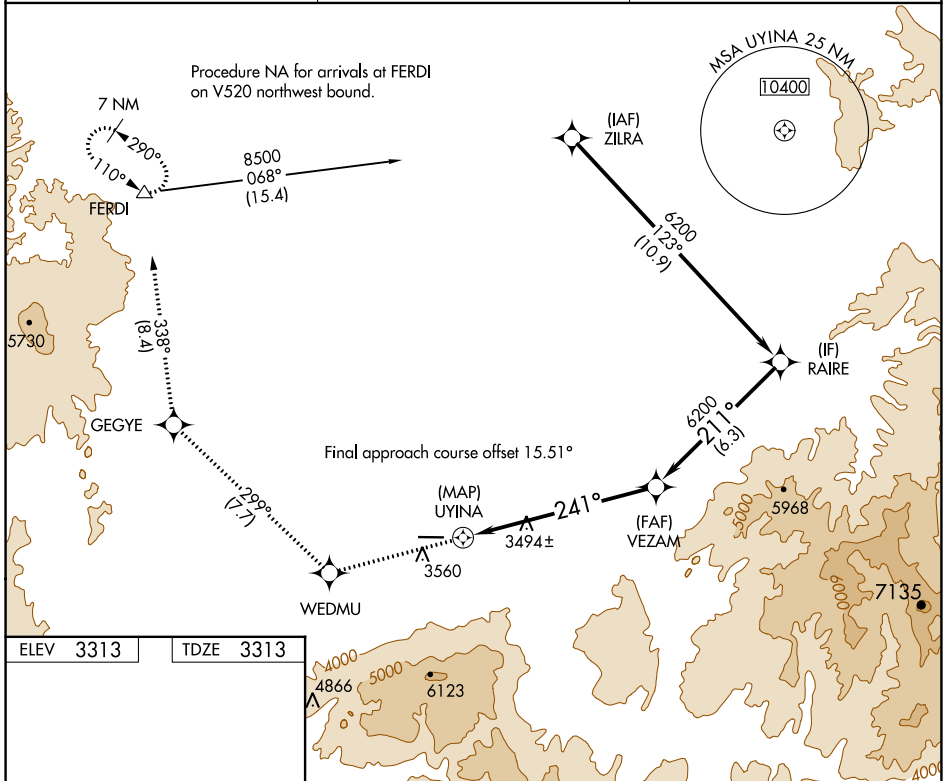
APP CRS <b>241°</b>	Rwy Idg <b>5101</b>
	TDZE <b>3313</b>
	Apt Elev <b>3313</b>

# RNAV (GPS) RWY 26

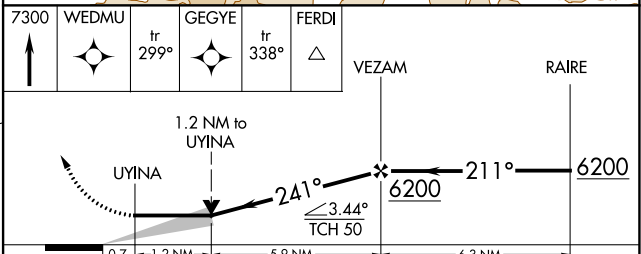
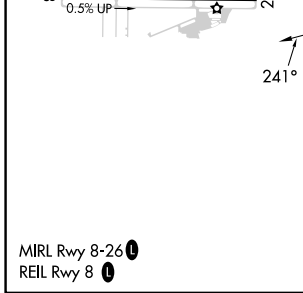
IDAHO COUNTY (GIC)

RNP APCH - GPS.	MISSED APPROACH: Climb to 7300 direct WEDMU and on track 299° to GEGYE and on track 338° to FERDI and hold, continue climb-in-hold to 7300.
Circling NA south of Rwy 8-26.	

AWOS-3 <b>118.175</b>	SEATTLE CENTER <b>123.95 290.55</b>	CTAF <b>122.8</b>
--------------------------	--	----------------------



ELEV 3313	TDZE 3313
-----------	-----------



CATEGORY	A	B	C	D
LNAV MDA	4060-1 747 (800-1)	4060-1¼ 747 (800-1¼)	4060-2	747 (800-2)
CIRCLING	4060-1 747 (800-1)	4060-1¼ 747 (800-1¼)	4060-2¼ 747 (800-2¼)	4060-2½ 747 (800-2½)

NW-1, 11 JUL 2024 to 08 AUG 2024

NW-1, 11 JUL 2024 to 08 AUG 2024