

APP CRS	Rwy Idg	<b>5101</b>
<b>076°</b>	TDZE	<b>3305</b>
	Apt Elev	<b>3313</b>

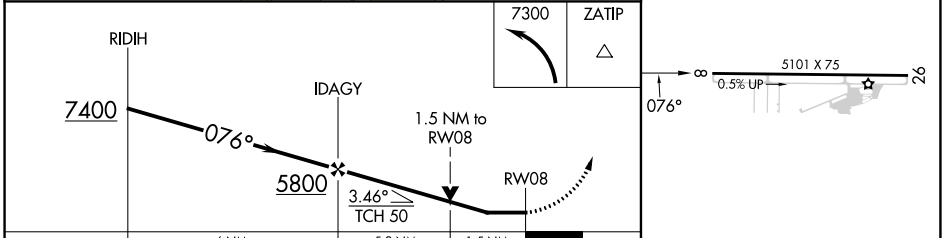
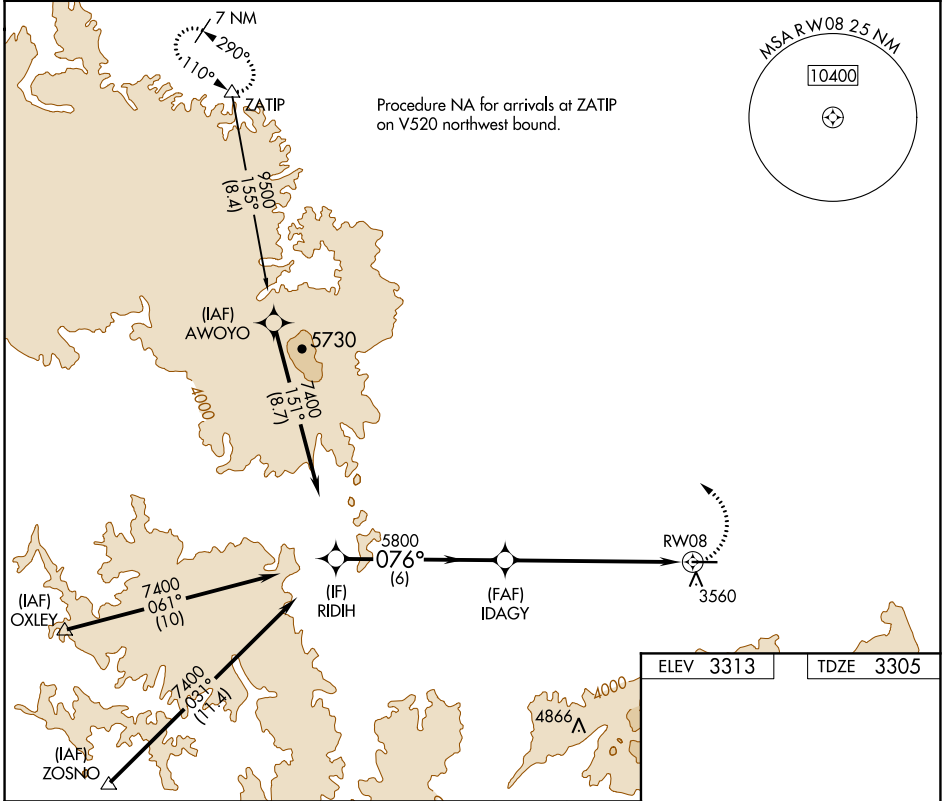
# RNAV (GPS) RWY 8

IDAHO COUNTY (GIC)

**⚠** Circling NA south of Rwy 8-26. Rwy 8 Helicopter visibility reduction below 3/4 SM NA. DME/DME RNP-0.3 NA.

**⚠** MISSED APPROACH: Climbing left turn to 7300 direct ZATIP and hold.

AWOS-3 <b>118.175</b>	SEATTLE CENTER <b>123.95 290.55</b>	CTAF <b>122.8</b>
--------------------------	--	----------------------



CATEGORY	A	B	C	D	
LNVA MDA	3900-1	595 (600-1)	3900-1 3/4	595 (600-1 3/4)	
<b>C</b> CIRCLING	3900-1	587 (600-1)	3900-1 3/4 587 (600-1 3/4)	3900-2 587 (600-2)	MIRL Rwy 8-26 <b>⚠</b> REIL Rwy 8 <b>⚠</b>

NW-1, 11 JUL 2024 to 08 AUG 2024

NW-1, 11 JUL 2024 to 08 AUG 2024