

LOC/DME I-DXU <b>111.9</b> Chan 56	APP CRS <b>353°</b>	Rwy Idg TDZE Apt Elev <b>16000</b> <b>5327</b> <b>5434</b>
--	------------------------	---

# ILS RWY 34L (CAT II & III)

DENVER INTL (DEN)

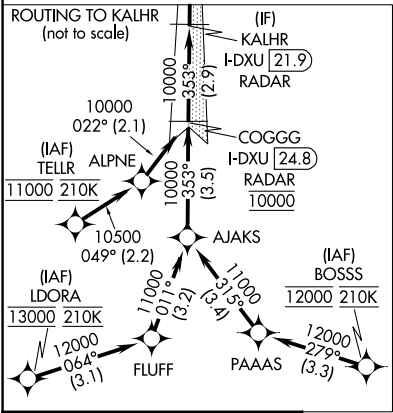
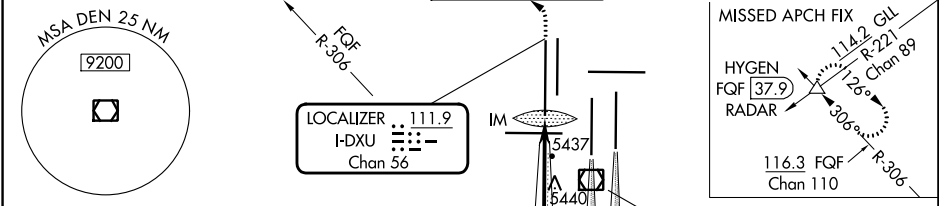
RNAV-1 GPS or RADAR required for procedure entry. From LDORA, BOSS, TELLR: RNAV-1 GPS required. DME or RADAR required.

**CAUTION:** CAT II: RVR 1000 authorized with specific OPSPEC, MSPEC, or LOA approval and use of autoland or HUD to touchdown. Simultaneous approach authorized with Rwy 35L/R.

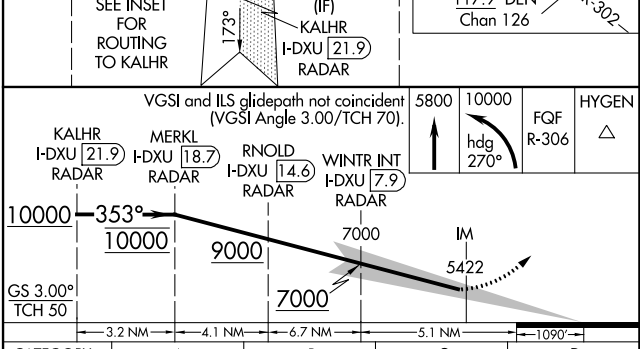
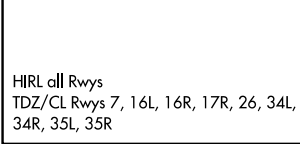
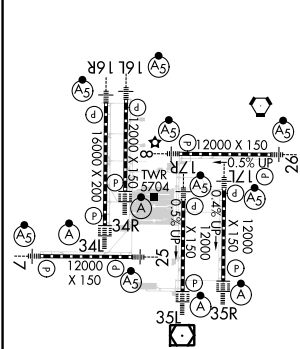
ALSF-2

MISSED APPROACH: Climb to 5800 then climbing left turn to 10000 on heading 270° and FQF VORTAC R-306 to HYGEN/FQF 37.9 DME/RADAR and hold.

D-ATIS ARR <b>125.6 379.9</b> DEP <b>134.025</b>	DENVER APP CON <b>119.3 307.3</b> (NORTH)	DENVER APP CON <b>120.35 379.3</b> (SOUTH)	DENVER TOWER <b>135.3 351.95</b>	GND CON <b>121.35 379.175</b>	CLNC DEL <b>118.75</b>	CPDLC
--	---	--	-------------------------------------	----------------------------------	---------------------------	-------



ELEV 5434	D	TDZE 5327
-----------	---	-----------



CATEGORY	A	B	C	D
S-ILS 34L	CAT II RA 108/12 100 DA 5427			
S-ILS 34L	CAT III RVR 03			

## CATEGORY II & III ILS - SPECIAL AIRCREW & AIRCRAFT CERTIFICATION REQUIRED

SW-1, 11 JUL 2024 to 08 AUG 2024

SW-1, 11 JUL 2024 to 08 AUG 2024