

LOC/DME I-OUF 111.1 Chan 48	APP CRS 353°	Rwy Idg 12000 TDZE 5354 Apt Elev 5434
---	------------------------	--

ILS RWY 34R (SA CAT I)

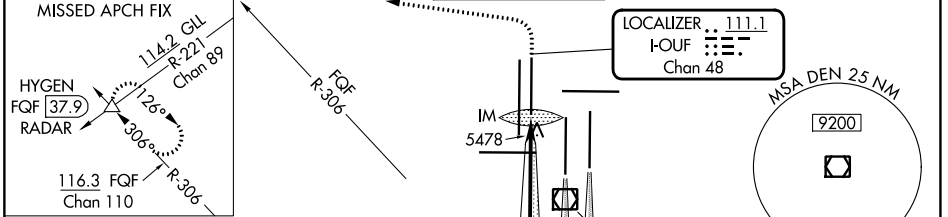
DENVER INTL (DEN)

Requires specific OPSPEC, MSPEC or LOA approval and use of HUD to DH. Simultaneous approach authorized with Rwy 35L/R.

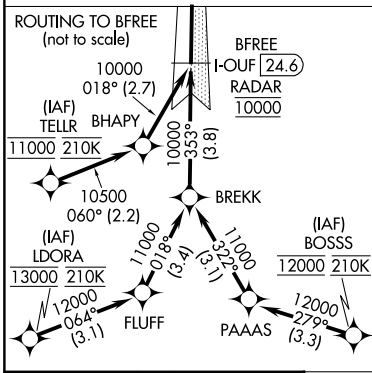
ALSIF-2

MISSED APPROACH: Climb to 5800 then climbing left turn to 10000 on heading 270° and on FQF VORTAC R-306 to HYGEN/FQF 37.9 DME/RADAR and hold.

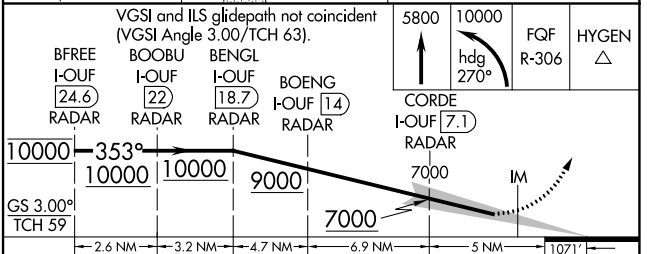
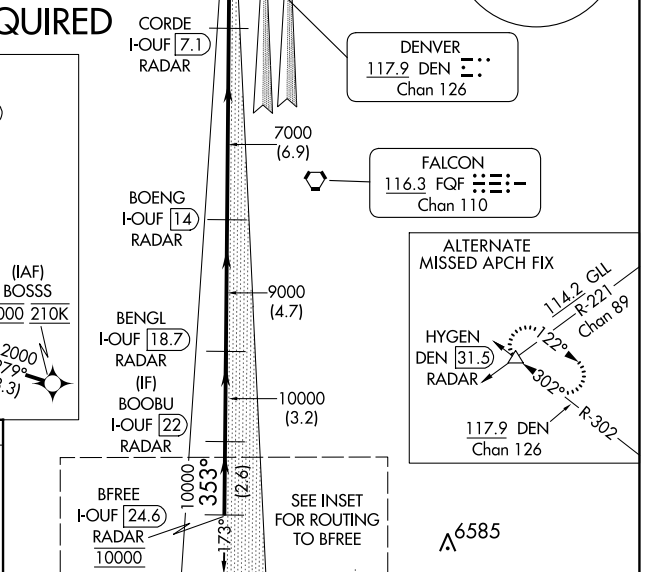
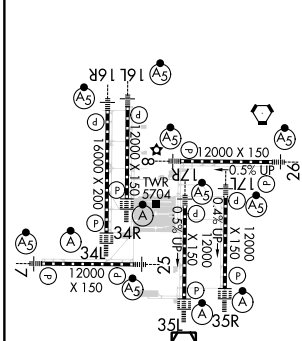
D-ATIS ARR 125.6 379.9 DEP 134.025	DENVER APP CON 119.3 307.3 120.35 379.3 (NORTH) (SOUTH)	DENVER TOWER 135.3 351.95	GND CON 121.35 379.175	CLNC DEL 118.75	CPDLC
--	--	-------------------------------------	----------------------------------	---------------------------	-------



RADAR or GPS REQUIRED



ELEV 5434	D	TDZE 5354
-----------	---	-----------



CATEGORY	A	B	C	D
S-ILS 34R	RA 175/14 150 DA 5504			

SA CATEGORY I ILS - SPECIAL AIRCREW & AIRCRAFT CERTIFICATION REQUIRED

SW-1, 11 JUL 2024 to 08 AUG 2024

SW-1, 11 JUL 2024 to 08 AUG 2024