


LOC/DME I-LTT 111.1 Chan 48	APP CRS 173°	Rwy Idg TDZE Apt Elev	12000 5357 5434
---	------------------------	-----------------------------	--

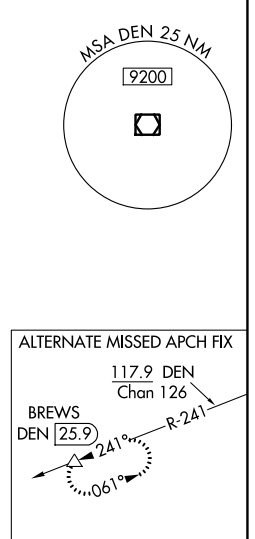
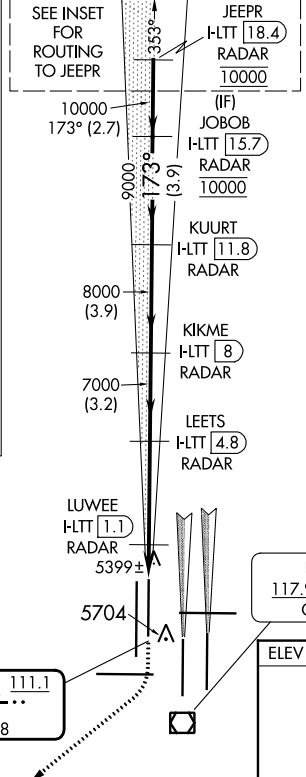
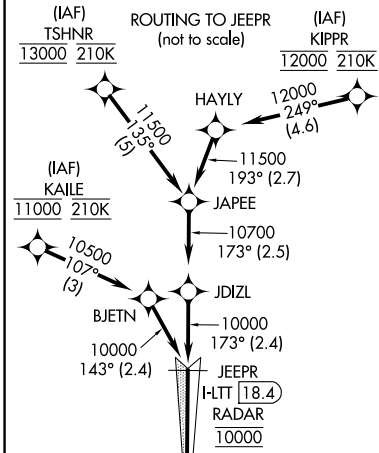
ILS or LOC RWY 16L

DENVER INTL (DEN)

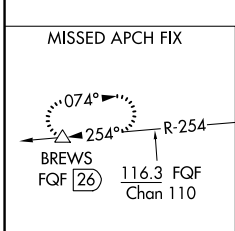
Simultaneous approach authorized with Rwy 17L/17R. DME required. S-LOC 16L DME or RADAR required. For inoperative MALS, increase S-LOC Cat C/D visibility to RVR 4500.

MALS  MISSED APPROACH: Climb to 5900 then climbing right turn to 12000 on heading 218° and on FGF VORTAC R-254 to BREWS/FGF 26 DME and hold.

D-ATIS ARR 125.6 379.9 DEP 134.025	DENVER APP CON 119.3 307.3 120.35 379.3 (NORTH) (SOUTH)	DENVER TOWER 135.3 351.95	GND CON 121.35 379.175	CLNC DEL 118.75	CPDLC
--	--	-------------------------------------	----------------------------------	---------------------------	-------



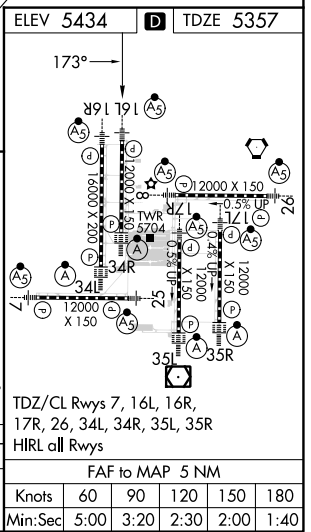
RADAR or GPS REQUIRED



LOCALIZER 111.1
I-LTT 118.4
Chan 48

DENVER
117.9 DEN
Chan 126

5900 ↑	12000 hdg 218°	FGF R-254	BREWS △	VGSi and ILS glidepath not coincident (VGSi Angle 3.00/TCH 71).
*LOC only		LEETS I-LTT 4.8 RADAR	KIKME I-LTT 8 RADAR	JOBOB I-LTT 15.7 RADAR
LUYEE I-LTT 1.1 RADAR		KUURT I-LTT 11.8 RADAR	JEEPR I-LTT 18.4 RADAR	
H-LTT 0.2		173° 10000		
*I-LTT 0.6		9000		
0.8 0.5		8000		
3.7 NM		7000		
3.2 NM		5820*		
3.9 NM		GS 3.00° TCH 60		
3.9 NM		2.7 NM		
CATEGORY	A	B	C	D
S-ILS 16L	5557/18 200 (200-½)			
S-LOC 16L	5660/24 303 (300-½)			



SW-1, 11 JUL 2024 to 08 AUG 2024

SW-1, 11 JUL 2024 to 08 AUG 2024