


APP CRS <b>173°</b>	Rwy Idg <b>12000</b>
	TDZE <b>5339</b>
	Apt Elev <b>5434</b>

# RNAV (RNP) Z RWY 17L

DENVER INTL (DEN)

**▼** GPS required. For inoperative MALSR, increase RNP 0.10 all Cats visibility to RVR 4500 and RNP 0.30 all Cats visibility to RVR 6000. Simultaneous approach authorized. Use of FD or AP providing RNAV track guidance required during simultaneous operations. For uncompensated Baro-VNAV systems, procedure NA below -25°C (-13°F) or above 48°C (118°F).

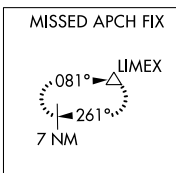
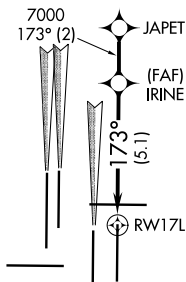
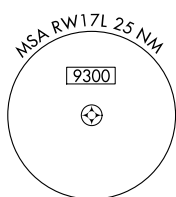
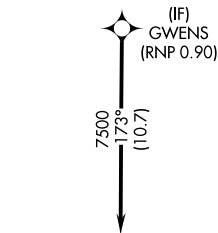
MALSR 

MISSED APPROACH: Climb to 5900 then climbing left turn to 10000 direct LIMEX and hold.

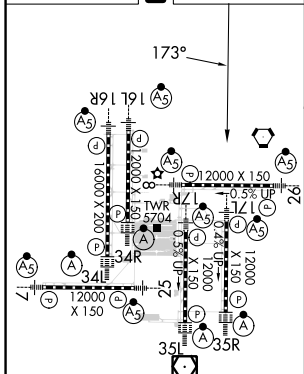
D-ATIS	DENVER APP CON	DENVER TOWER	GND CON	CLNC DEL	CPDLC
ARR <b>125.6 379.9</b>	<b>119.3 307.3</b> (NORTH) <b>120.35 379.3</b> (SOUTH)	<b>132.35 239.275</b>	<b>121.85 377.1</b>	<b>118.75</b>	
DEP <b>134.025</b>					

## RADAR REQUIRED

Λ 6260



ELEV 5434	<b>D</b>	TDZE 5339
-----------	----------	-----------



HIRL all Rwys  
TDZ/CL Rwys 7, 16L, 16R, 17R,  
26, 34L, 34R, 35L, 35R

5900	10000	LIMEX	VGSI and RNAV glidepath not coincident (VGSI Angle 3.00/TCH 66).	JAPET
RW17L		IRINE	7000	7500
			7000	GP 3.00° TCH 48
		5.1 NM	2 NM	
CATEGORY	A	B	C	D
RNP 0.10 DA	5600/24 261 (200-½)			
RNP 0.30 DA	5716/40 377 (300-¾)			

## AUTHORIZATION REQUIRED

SW-1, 11 JUL 2024 to 08 AUG 2024

SW-1, 11 JUL 2024 to 08 AUG 2024