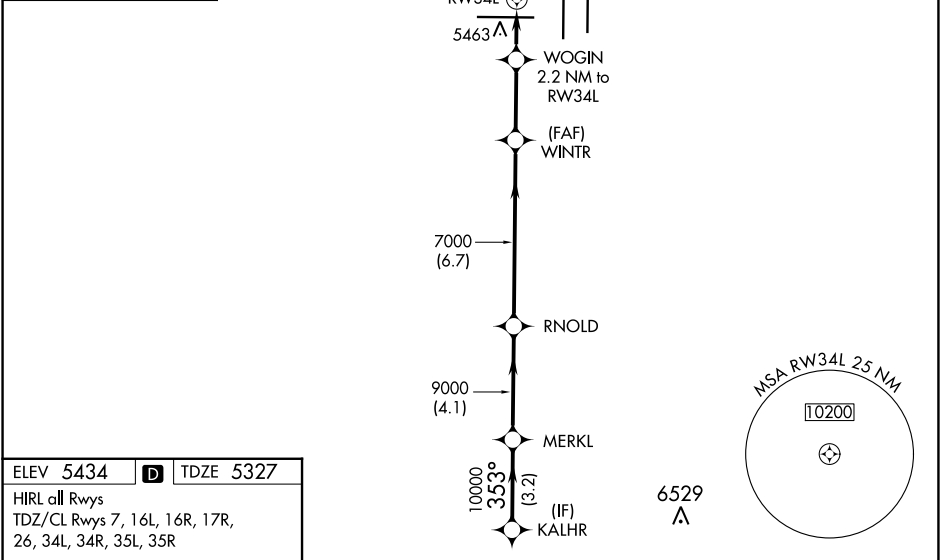
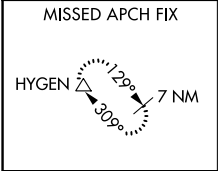


WAAS CH 45619 W34A	APP CRS 353°	Rwy Idg 16000 TDZE 5327 Apt Elev 5434
--	------------------------	--

RNAV (GPS) Y RWY 34L

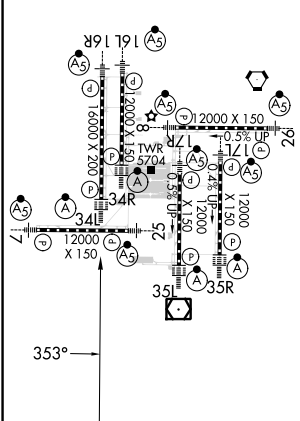
DENVER INTL (DEN)

RNP APCH-GPS.		DENVER TOWER 135.3 351.95		GND CON 121.35 379.175	CLNC DEL 118.75	CPDLC
<p>▽ LNAV procedure NA during simultaneous operations. Use of FD or AP required during simultaneous operations. Simultaneous approach authorized with Rwy 35L/R. For uncompensated Baro-VNAV systems, LNAV/VNAV NA below -22°C or above 54°C.</p>		<p>ALS2</p>		<p>MISSED APPROACH: Climb to 5900 then climbing left turn to 10000 direct HYGEN and hold.</p>		
D-ATIS ARR 125.6 379.9 DEP 134.025	DENVER APP CON 119.3 307.3 (NORTH) 120.35 379.3 (SOUTH)					



ELEV 5434	D	TDZE 5327
-----------	----------	-----------

HIRL all Rwys
TDZ/CL Rwys 7, 16L, 16R, 17R,
26, 34L, 34R, 35L, 35R



KALHR		MERKL	RNOLD	WINTR	WOGIN	5900	10000	HYGEN
10000-353°		10000	9000	7000	6060	↑	↙	△
GP 3.00° TCH 50		2.2 NM to RW34L		1 NM to RW34L				
3.2 NM		4.1 NM		6.7 NM		2.9 NM		1.2 NM
CATEGORY	A		B		C		D	
LPV DA	5527/18		200 (100-½)					
LNAV/VNAV DA	5663/26		336 (300-½)					
LNAV MDA	5720/24		393 (300-½)		5720/35		393 (300-¾)	

SW-1, 11 JUL 2024 to 08 AUG 2024

SW-1, 11 JUL 2024 to 08 AUG 2024