

| | | |
|--|------------------------|--|
| WAAS CH 53419 W35A | APP CRS 353° | Rwy Idg 12000 TDZE 5434 Apt Elev 5434 |
|--|------------------------|--|

RNAV (GPS) Y RWY 35L

DENVER INTL (DEN)

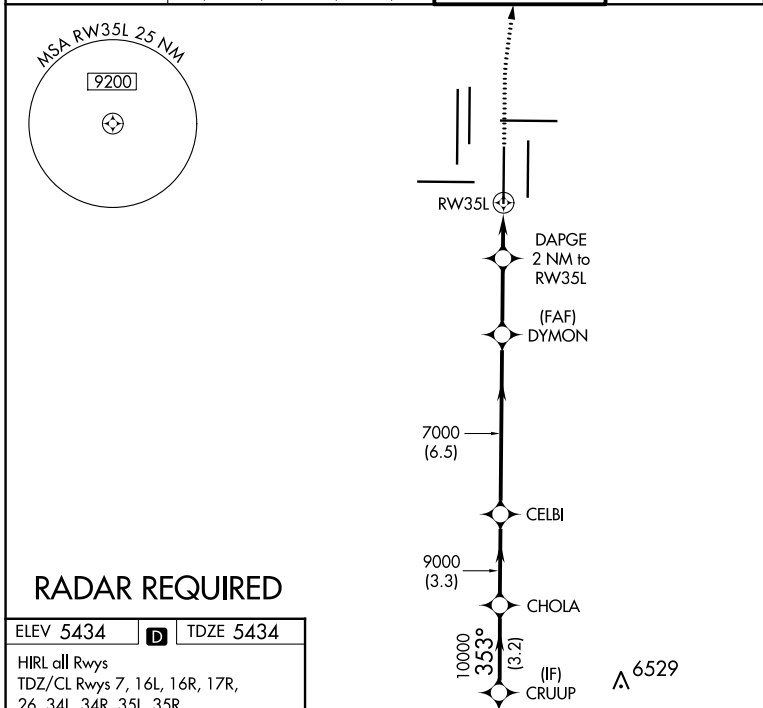
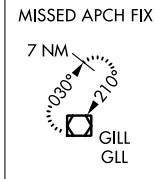
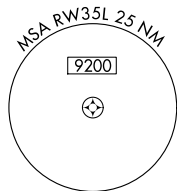
▼ For uncompensated Baro-VNAV systems, LNAV/VNAV NA below -25°C (-13°F) or above 46°C (115°F). DME/DME RNP-0.3 NA. For inoperative ALSF, increase LNAV/VNAV visibility all Cats to RVR 4000. LNAV procedure NA during simultaneous operations. Simultaneous approach authorized with Rwy 34L, Rwy 34R, and Rwy 35R. Use of FD or AP providing RNAV track guidance required during simultaneous operations.

ALSF-2



MISSED APPROACH:
Climb to 10000 then right turn direct GLL VOR/DME and hold.

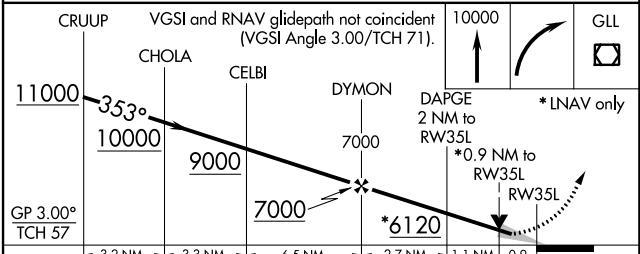
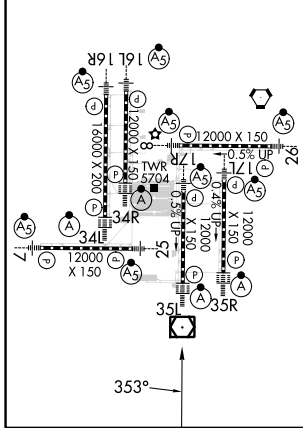
| | | | | | |
|--|--|-------------------------------------|--------------------------------|---------------------------|-------|
| D-ATIS ARR 125.6 379.9 DEP 134.025 | DENVER APP CON 119.3 307.3 120.35 379.3 (NORTH) (SOUTH) | DENVER TOWER 124.3 322.45 | GND CON 121.85 377.1 | CLNC DEL 118.75 | CPDLC |
|--|--|-------------------------------------|--------------------------------|---------------------------|-------|



RADAR REQUIRED

| | | |
|-----------|----------|-----------|
| ELEV 5434 | D | TDZE 5434 |
|-----------|----------|-----------|

HIRL all Rwys
TDZ/CL Rwys 7, 16L, 16R, 17R,
26, 34L, 34R, 35L, 35R



| CATEGORY | A | B | C | D |
|--------------|---------------------|---|---------------------|---|
| LPV DA | 5634/18 | | 200 (200-½) | |
| LNAV/VNAV DA | 5684/24 | | 250 (300-½) | |
| LNAV MDA | 5780/24 346 (400-½) | | 5780/30 346 (400-½) | |

SW-1, 11 JUL 2024 to 08 AUG 2024

SW-1, 11 JUL 2024 to 08 AUG 2024