

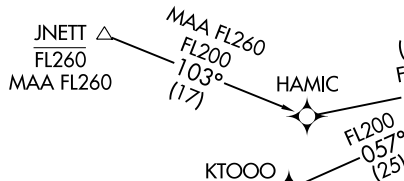
DENVER APP CON
 120.35 379.3
 D-ATIS ARR
 125.6 379.9
 DENVER TOWER
 128.75 273.55 (Rwy 7-25)
 132.35 239.275 (Rwys 8-26, 17L-35R)
 124.3 322.45 (Rwy 17R-35L)
 135.3 351.95 (Rwys 16L-34R, 16R-34L)

RNAV 1 - DME/DME/IRU or GPS
 RADAR required for non-GPS equipped aircraft

See following page
 for arrival routes

SSKII
 FL220
 FL200

12 NM

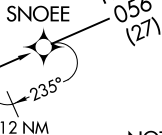


KTOOO

12 NM

HAQHY
 FL260
 MAA FL260

BOWLL



FL270
 055°
 (49)

12 NM

FL200
 069°
 (92)

FL200
 056°
 (48)



12 NM

WUNZE
 FL260
 MAA FL260

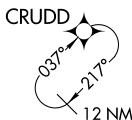
FL200
 057°
 (22)

FL200
 043°
 (50)

- NOTE: Turbojet aircraft only.
- NOTE: Turbojet aircraft descend via MACH number until intercepting 280K. Maintain 280K until slowed by STAR.
- NOTE: Denver Center will issue "descend via" clearance and landing direction.
- NOTE: Expect runway assignment on initial contact with Denver TRACON.
- NOTE: BOWLL enroute transition: do not file-to be assigned by ATC.

- NOTE: Landing north select Rwy 34R transition.
- NOTE: Landing south select Rwy 16R transition.
- NOTE: Landing east select Rwy 7 transition.
- NOTE: Landing west select Rwy 26 transition.

- BOWLL TRANSITION (BOWLL.SSKII3)
- BUMMP TRANSITION (BUMMP.SSKII3)
- HAQHY TRANSITION (HAQHY.SSKII3)
- JNETT TRANSITION (JNETT.SSKII3)
- WUNZE TRANSITION (WUNZE.SSKII3)



12 NM

NOTE: Chart not to scale.

(CONTINUED ON FOLLOWING PAGE)

SSKII THREE ARRIVAL (RNAV) Transition Routes
 (SSKII.SSKII3) 07OCT21

DENVER, COLORADO
 DENVER INTL (DEN)

(SSKII.SSKII3) 23110
 SSKII THREE ARRIVAL (RNAV) Transition Routes
 AL-9077 (FAA)

DENVER INTL (DEN)
 DENVER, COLORADO

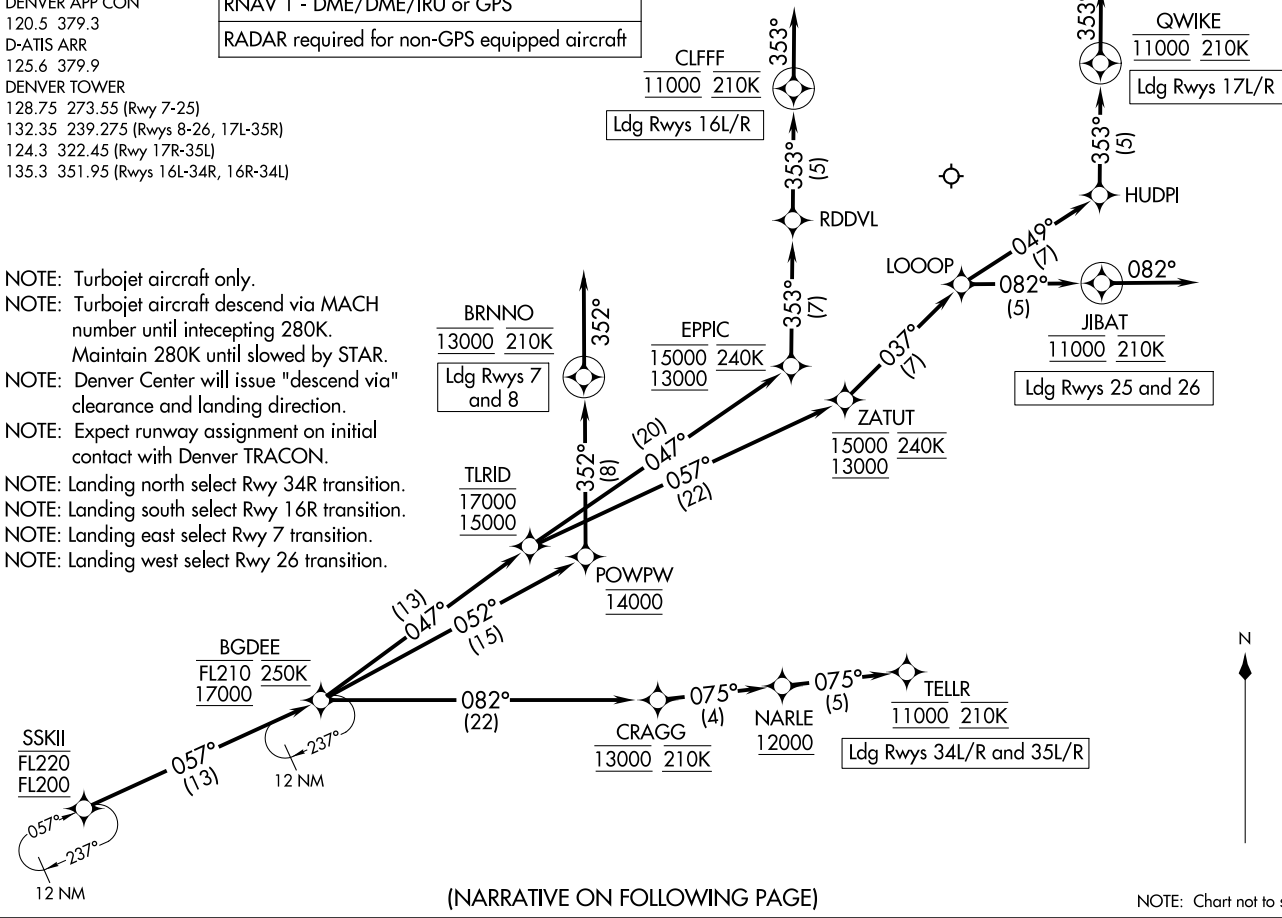
SSKII THREE ARRIVAL (RNAV) Arrival Routes

DENVER, COLORADO
DENVER INTL (DEN)
(SSKII, SSKII3) 07OCT21

DENVER APP CON
120.5 379.3
D-ATIS ARR
125.6 379.9
DENVER TOWER
128.75 273.55 (Rwy 7-25)
132.35 239.275 (Rwys 8-26, 17L-35R)
124.3 322.45 (Rwy 17R-35L)
135.3 351.95 (Rwys 16L-34R, 16R-34L)

RNAV 1 - DME/DME/IRU or GPS
RADAR required for non-GPS equipped aircraft

- NOTE: Turbojet aircraft only.
- NOTE: Turbojet aircraft descend via MACH number until intercepting 280K. Maintain 280K until slowed by STAR.
- NOTE: Denver Center will issue "descend via" clearance and landing direction.
- NOTE: Expect runway assignment on initial contact with Denver TRACON.
- NOTE: Landing north select Rwy 34R transition.
- NOTE: Landing south select Rwy 16R transition.
- NOTE: Landing east select Rwy 7 transition.
- NOTE: Landing west select Rwy 26 transition.



(NARRATIVE ON FOLLOWING PAGE)

NOTE: Chart not to scale.

(SSKII, SSKII3) 23110
SSKII THREE ARRIVAL (RNAV) Arrival Routes
AL-9077 (FAA)

DENVER INTL (DEN)
DENVER, COLORADO

ARRIVAL ROUTE DESCRIPTION

From SSKII on track 057° to cross BGDEE between 17000 and FL210 and at 250K.

LANDING RUNWAYS 7, 8: From BGDEE on track 052° to cross POWPW at 14000, then on track 352° to cross BRNNO at 13000 and at 210K, then on track 352°. Expect RADAR vectors to final approach course.

LANDING RUNWAYS 16L/R: From BGDEE on track 047° to cross TLRID between 15000 and 17000, then on track 047° to cross EPPIC between 13000 and 15000 and at 240K, then on track 353° to RDDVL, then on track 353° to cross CLFFF at 11000 and at 210K, then on track 353°. Expect RADAR vectors to final approach course.

LANDING RUNWAYS 17L/R: From BGDEE on track 047° to cross TLRID between 15000 and 17000, then on track 057° to cross ZATUT between 13000 and 15000 and at 240K, then on track 037° to LOOOP, then on track 049° to HUDPI, then on track 353° to cross QWIKI at 11000 and at 210K, then on track 353°. Expect RADAR vectors to final approach course.

LANDING RUNWAYS 25, 26: From BGDEE on track 047° to cross TLRID between 15000 and 17000, then on track 057° to cross ZATUT between 13000 and 15000 and at 240K, then on track 037° to LOOOP, then on track 082° to cross JIBAT at 11000 and at 210K, then on track 082°. Expect RADAR vectors to final approach course.

LANDING RUNWAYS 34L/R, 35L/R: From BGDEE on track 082° to cross CRAGG at 13000 and at 210K, then on track 075° to cross NARLE at or above 12000, then on track 075° to cross TELLR at 11000 and at 210K. Expect ILS or LOC RWY 34L/R or ILS or LOC RWY 35L/R approach.

LOST COMMUNICATIONS: In the event of lost communications prior to runway transition assignment, when DEN is landing south, execute the ILS RWY 16R, when DEN is landing north, execute the ILS RWY 34R.

SW-1, 11 JUL 2024 to 08 AUG 2024

SW-1, 11 JUL 2024 to 08 AUG 2024