

# TBARR THREE ARRIVAL (RNAV) Transition Routes

DENVER APP CON

120.35 379.3

D-ATIS ARR

125.6 379.9

DENVER TOWER

128.75 273.55 (Rwy 7-25)

132.35 239.275 (Rwys 8-26, 17L-35R)

124.3 322.45 (Rwy 17R-35L)

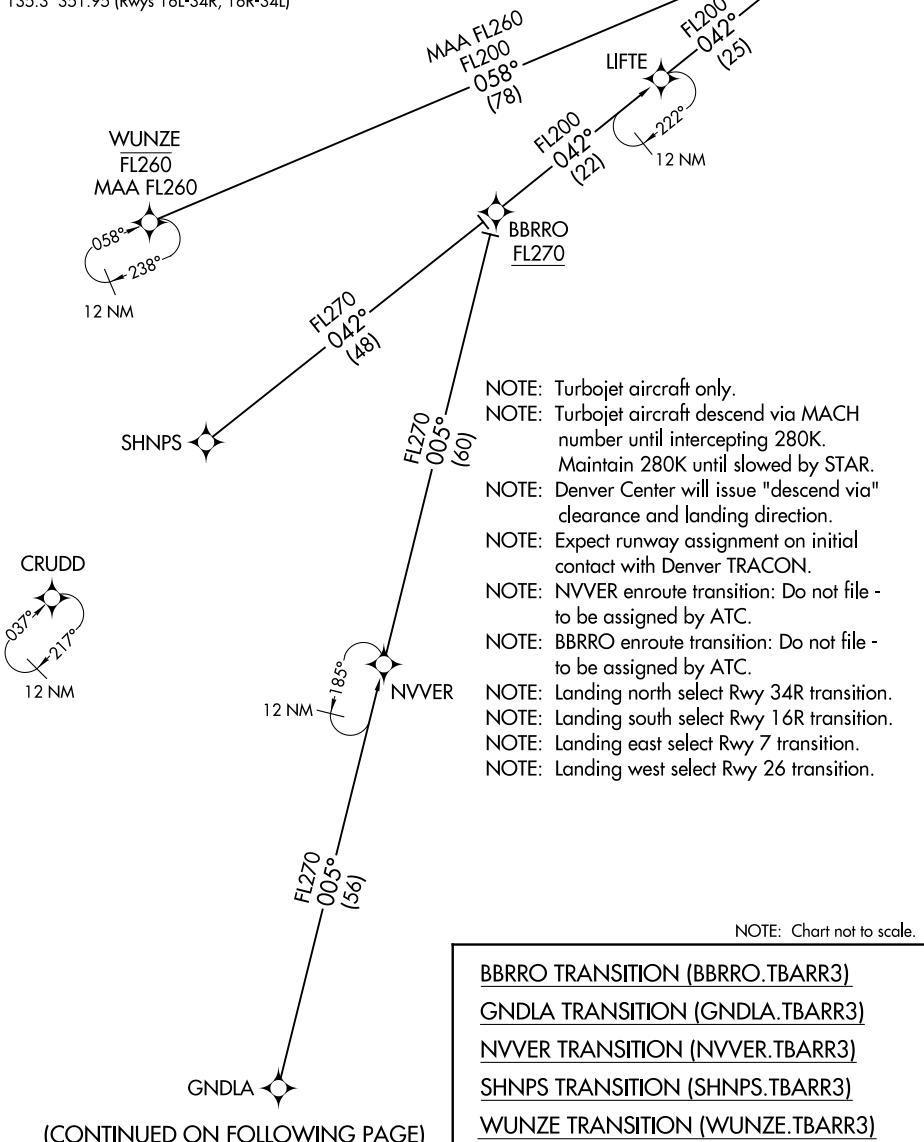
135.3 351.95 (Rwys 16L-34R, 16R-34L)

RNAV 1-DME/DME/IRU or GPS

RADAR required for non-GPS equipped aircraft

See following page  
for arrival routes.

TBARR  
FL220  
FL200



- NOTE: Turbojet aircraft only.
- NOTE: Turbojet aircraft descend via MACH number until intercepting 280K. Maintain 280K until slowed by STAR.
- NOTE: Denver Center will issue "descend via" clearance and landing direction.
- NOTE: Expect runway assignment on initial contact with Denver TRACON.
- NOTE: NVVER enroute transition: Do not file - to be assigned by ATC.
- NOTE: BBRRO enroute transition: Do not file - to be assigned by ATC.
- NOTE: Landing north select Rwy 34R transition.
- NOTE: Landing south select Rwy 16R transition.
- NOTE: Landing east select Rwy 7 transition.
- NOTE: Landing west select Rwy 26 transition.

NOTE: Chart not to scale.

- BBRRO TRANSITION (BBRRO.TBARR3)
- GNDLA TRANSITION (GNDLA.TBARR3)
- NVVER TRANSITION (NVVER.TBARR3)
- SHNPS TRANSITION (SHNPS.TBARR3)
- WUNZE TRANSITION (WUNZE.TBARR3)

(CONTINUED ON FOLLOWING PAGE)

SW-1, 11 JUL 2024 to 08 AUG 2024

SW-1, 11 JUL 2024 to 08 AUG 2024

(TBARR.TBARR3) 23110

AL-9077 (FAA)

DENVER INTL (DEN)  
DENVER, COLORADO

# TBARR THREE ARRIVAL (RNAV) Arrival Routes

DENVER APP CON

120.35 379.3

D-ATIS ARR

125.6 379.9

DENVER TOWER

128.75 273.55 (Rwy 7-25)

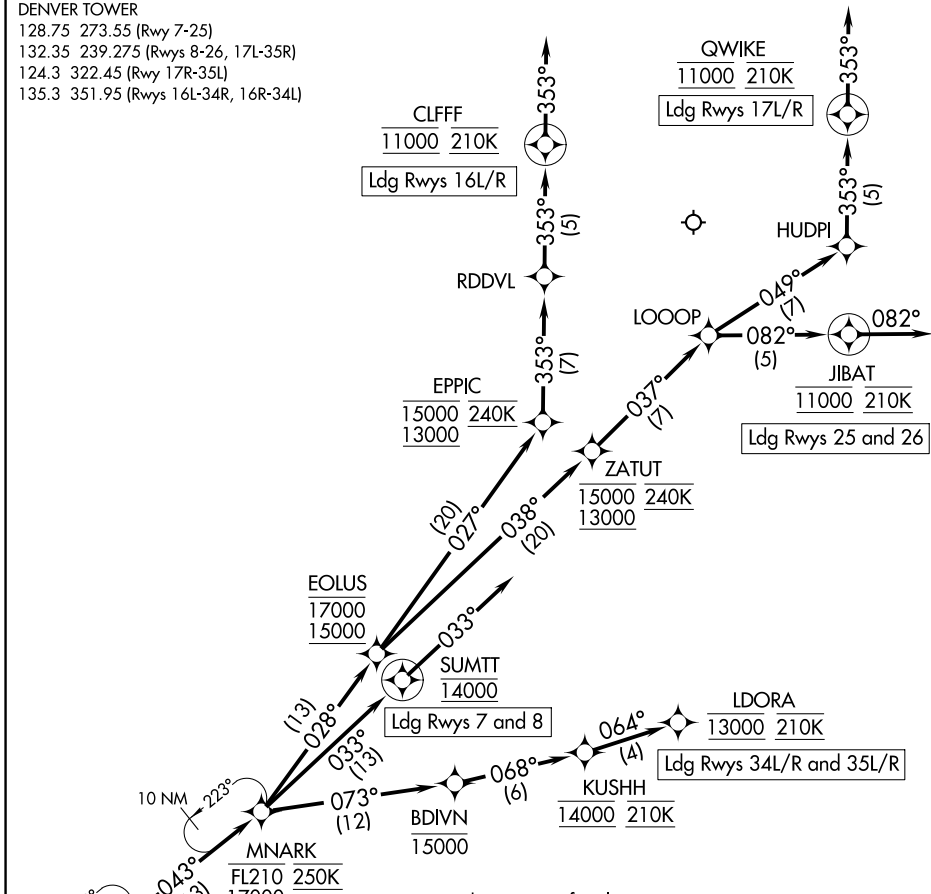
132.35 239.275 (Rwys 8-26, 17L-35R)

124.3 322.45 (Rwy 17R-35L)

135.3 351.95 (Rwys 16L-34R, 16R-34L)

RNAV 1-DME/DME/IRU or GPS

RADAR required for non-GPS equipped aircraft



SW-1, 11 JUL 2024 to 08 AUG 2024

SW-1, 11 JUL 2024 to 08 AUG 2024

- NOTE: Turbojet aircraft only.
- NOTE: Turbojet aircraft descend via MACH number until intercepting 280K. Maintain 280K until slowed by STAR.
- NOTE: Denver Center will issue "descend via" clearance and landing direction.
- NOTE: Expect runway assignment on initial contact with Denver TRACON.
- NOTE: Landing north select Rwy 34R transition.
- NOTE: Landing south select Rwy 16R transition.
- NOTE: Landing east select Rwy 7 transition.
- NOTE: Landing west select Rwy 26 transition.

(NARRATIVE ON FOLLOWING PAGE)

NOTE: Chart not to scale.

# TBARR THREE ARRIVAL (RNAV) Arrival Routes

(TBARR.TBARR3) 07OCT21

DENVER, COLORADO  
DENVER INTL (DEN)

ARRIVAL ROUTE DESCRIPTION

From TBARR on track 043° to cross MNARK between 17000 and FL210 and at 250K.

LANDING RUNWAYS 7, 8: From MNARK on track 033° to cross SUMTT at 14000, then on track 033°. Expect RADAR vectors to final approach course.

LANDING RUNWAYS 16L/R: From MNARK on track 028° to cross EOLUS between 15000 and 17000, then on track 027° to cross EPPIC between 13000 and 15000 and at 240K, then on track 353° to RDDVL, then on track 353° to cross CLFFF at 11000 and at 210K, then on track 353°. Expect RADAR vectors to final approach course.

LANDING RUNWAYS 17L/R: From MNARK on track 028° to cross EOLUS between 15000 and 17000, then on track 038° to cross ZATUT between 13000 and 15000 and at 240K, then on track 037° to LOOOP, then on track 049° to HUDPI, then on track 353° to cross QWIKI at 11000 and at 210K, then on track 353°. Expect RADAR vectors to final approach course.

LANDING RUNWAYS 25, 26: From MNARK on track 028° to cross EOLUS between 15000 and 17000, then on track 038° to cross ZATUT between 13000 and 15000 and at 240K, then on track 037° to LOOOP, then on track 082° to cross JIBAT at 11000 and at 210K, then on track 082°. Expect RADAR vectors to final approach course.

LANDING RUNWAYS 34L/R: From MNARK on track 073° to cross BDIVN at or below 15000, then on track 068° to cross KUSHH at 14000 and at 210K, then on track 064° to cross LDORA at 13000 and at 210K. Expect ILS or LOC RWY 34L/R approach.

LANDING RUNWAYS 35L/R: From MNARK on track 073° to cross BDIVN at or below 15000, then on track 068° to cross KUSHH at 14000 and at 210K, then on track 064° to cross LDORA at 13000 and at 210K. Expect ILS or LOC RWY 35L/R approach.

LOST COMMUNICATIONS: In the event of lost communications prior to runway transition assignment, when DEN is landing south, execute the ILS RWY 16R, when DEN is landing north, execute the ILS RWY 35L.

SW-1, 11 JUL 2024 to 08 AUG 2024

SW-1, 11 JUL 2024 to 08 AUG 2024