

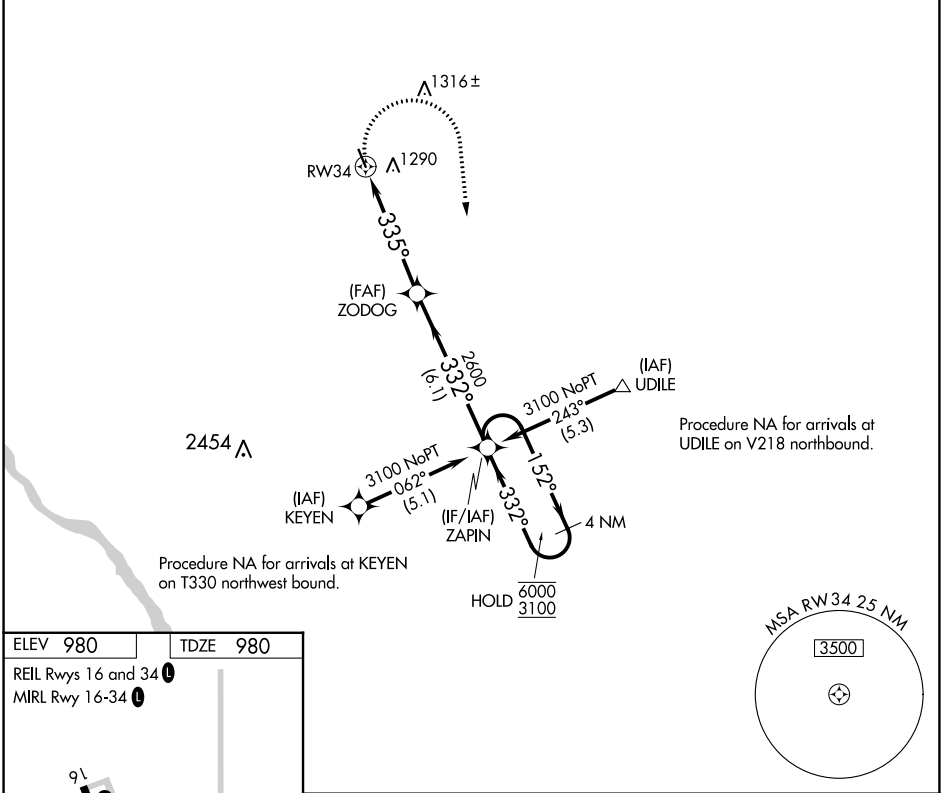
APP CRS 335°	Rwy Idg 3900
	TDZE 980
	Apt Elev 980

RNAV (GPS) RWY 34

PRINCETON MUNI (PNM)

RNP APCH.	MISSED APPROACH: Climbing right turn to 3100 direct ZAPIN and hold.
▼ ▲ Rwy 34 helicopter visibility reduction below 3/4 SM NA.	

AWOS-3 119.025	MINNEAPOLIS CENTER 121.05 235.775	UNICOM 123.0 (CTAF) 1
--------------------------	---	---------------------------------



NC-1, 11 JUL 2024 to 08 AUG 2024

NC-1, 11 JUL 2024 to 08 AUG 2024

