

WAAS CH 99714 W36A	APP CRS 355°	Rwy Idg TDZE Apt Elev 5200 733 733
--	------------------------	--

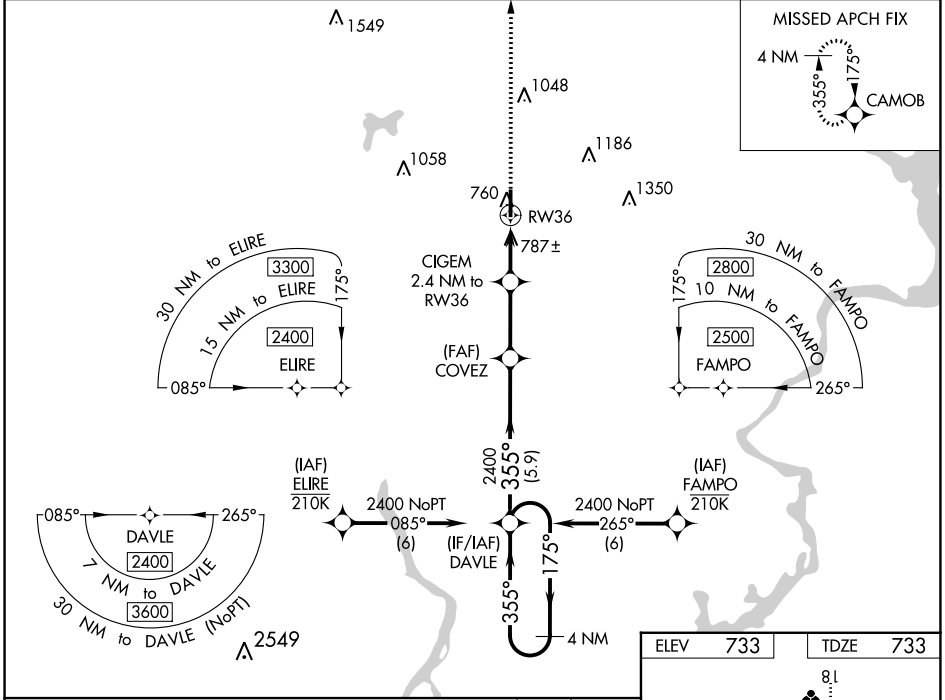
RNAV (GPS) RWY 36

CLAREMORE RGNL (GCM)

▼ For uncompensated Baro-VNAV systems, LNAV/VNAV NA below -16°C (4°F) or above 54°C (130°F). DME/DME RNP-0.3 NA.

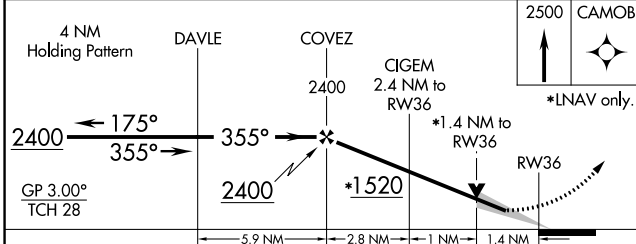
MISSED APPROACH: Climb to 2500 direct CAMOB and hold.

AWOS-3PT 119.925	TULSA APP CON 119.1 360.825	UNICOM 122.7 (CTAF) 0
----------------------------	---------------------------------------	---------------------------------



SC-1, 11 JUL 2024 to 08 AUG 2024

SC-1, 11 JUL 2024 to 08 AUG 2024



ELEV	733	TDZE	733
------	-----	------	-----

CATEGORY	A	B	C	D
LPV DA	983-3/4	250 (300-3/4)		NA
LNAV/VNAV DA	983-3/4	250 (300-3/4)		NA
LNAV MDA	1040-1	307 (400-1)	1040-1 3/8 307 (400-1 3/8)	NA
C CIRCLING	1260-1	527 (600-1)	1380-1 3/4 647 (700-1 3/4)	NA