

VORTAC EHF <b>115.4</b> Chan <b>101</b>	APP CRS <b>319°</b>	Rwy Idg TDZE Apt Elev	<b>4000</b> <b>377</b> <b>378</b>
---	------------------------	-----------------------------	---

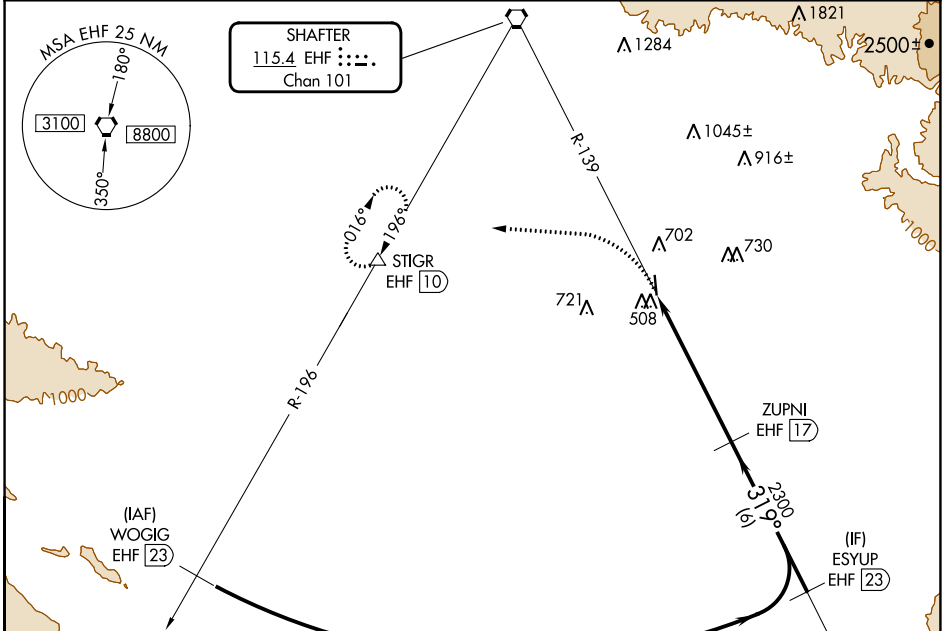
# VOR/DME RWY 34

BAKERSFIELD MUNI (L45)

**▼** Use Meadows fld altimeter setting. When Meadows fld altimeter setting not received, use Porterville altimeter setting and increase all MDA 80 feet, increase S-34 and Circling Cat C and D visibility ¼ mile. Visibility reduction by helicopters below ¼ SM NA. Night Landing Rwy 16 NA.

**▲ NA** MISSED APPROACH: Climbing left turn to 3000 on heading 260° to EHF R-196 to STIGR/EHF 10 DME and hold, continue climb-in-hold to 3000.

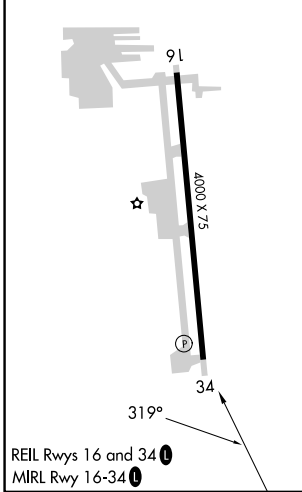
BFL ASOS <b>118.6</b>	BAKERSFIELD APP CON★ <b>126.45 270.3</b>	UNICOM <b>122.8 (CTAF) 0</b>
--------------------------	---	---------------------------------



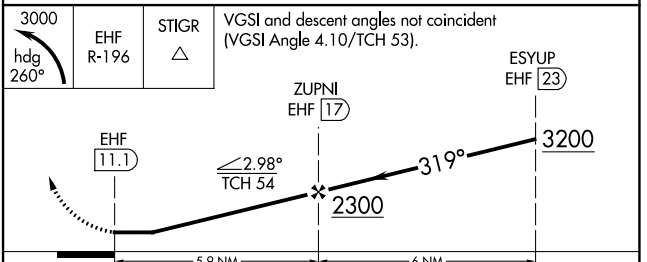
SW-3, 11 JUL 2024 to 08 AUG 2024

SW-3, 11 JUL 2024 to 08 AUG 2024

ELEV 378	TDZE 377
----------	----------



REIL Rwy 16 and 34  
MIRL Rwy 16-34



CATEGORY	A	B	C	D
S-34	900-1	523 (600-1)	900-1½	523 (600-1½)
<b>C</b> CIRCLING	1060-1	682 (700-1)	1120-2¼ 742 (800-2¼)	1120-2½ 742 (800-2½)

BAKERSFIELD, CALIFORNIA  
Amdt 1B 31MAR16

35°19'N-119°00'W

# VOR/DME RWY 34

BAKERSFIELD MUNI (L45)