

WAAS CH 65902 W30A	APP CRS 300°	Rwy Idg TDZE Apt Elev	4500 55 79
--	------------------------	-----------------------------	---------------------------------------

RNAV (GPS) RWY 30

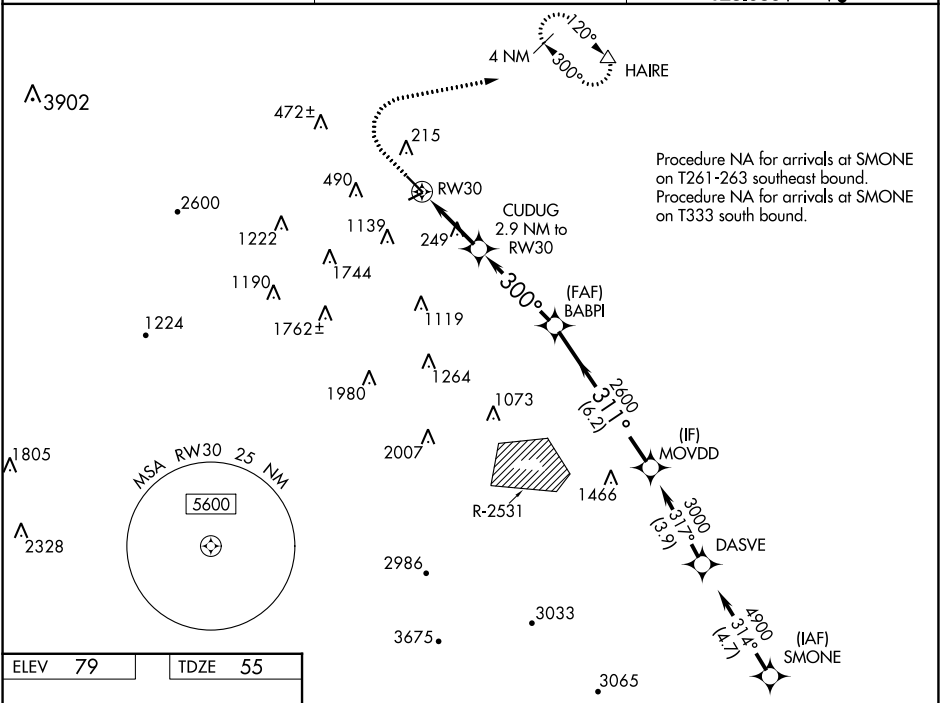
BYRON (C83)

RNP APCH.

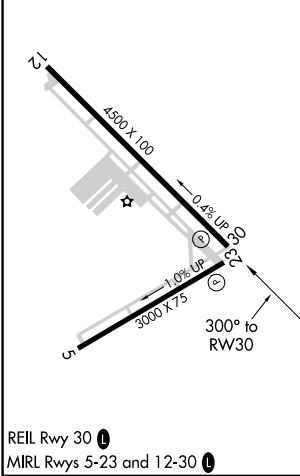
▼ For uncompensated Baro-VNAV systems, LNAV/VNAV NA below -15°C (5°F) or above 15°C (59°F). Circling NA southwest of Rwy 12-30.

MISSED APPROACH: Climb to 1000, then climbing right turn 4000 direct HAIRE and hold, continue climb-in-hold 4000.

AWOS-3 123.775	NORCAL APP CON 123.85 278.3	UNICOM 123.050 (CTAF)
--------------------------	---------------------------------------	---------------------------------



ELEV 79	TDZE 55
---------	---------



1000	4000	HAIRE	VGSi and RNAV glidepath not coincident (VGSi Angle 3.50/ TCH 25).			
*LNAV only			BABPI	MOVDD	3000	
			2600		GP 3.50° TCH 31	
			1140*			
			1.1 NM	1.8 NM	3.9 NM	6.2 NM
CATEGORY	A	B	C	D		
LPV DA	325-7/8		270 (300-7/8)			
LNAV/VNAV DA	404-1 1/8		349 (400-1 1/8)			
LNAV MDA	500-1	445 (500-1)	500-1 3/8	445 (500-1 3/8)		
CIRCLING	600-1	521 (600-1)	680-1 3/4	820-2 1/2	601 (700-1 3/4)	741 (800-2 1/2)

RNAV (GPS) RWY 30

SW-2, 11 JUL 2024 to 08 AUG 2024

SW-2, 11 JUL 2024 to 08 AUG 2024