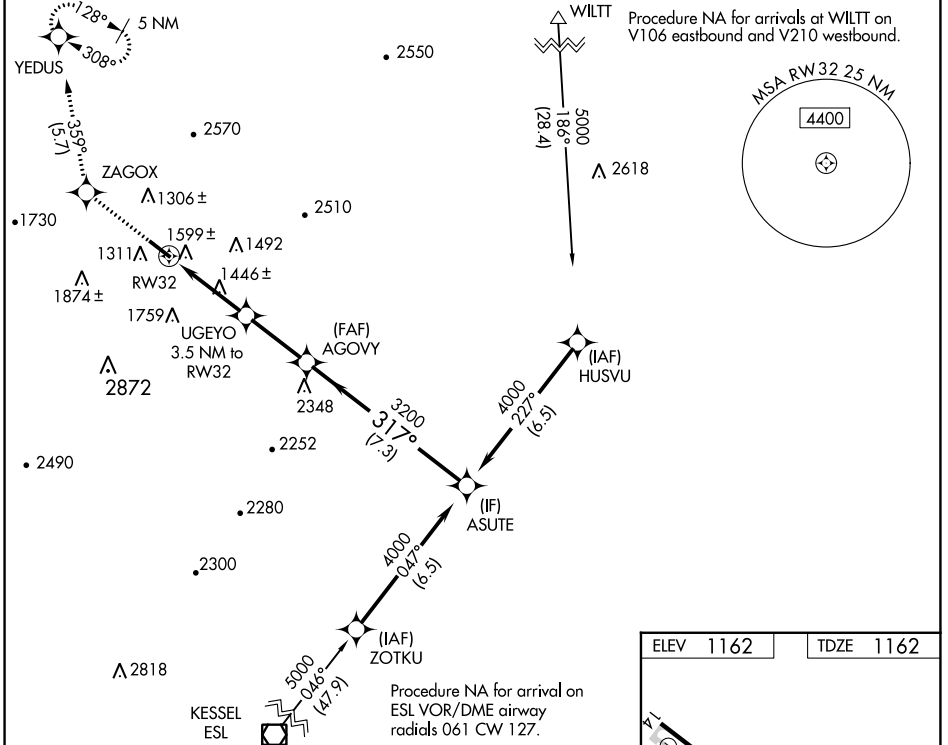


WAAS CH 90437 W32A	APP CRS 317°	Rwy Idg TDZE Apt Elev	5006 1162 1162
--	------------------------	-----------------------------	---

RNAV (GPS) RWY 32

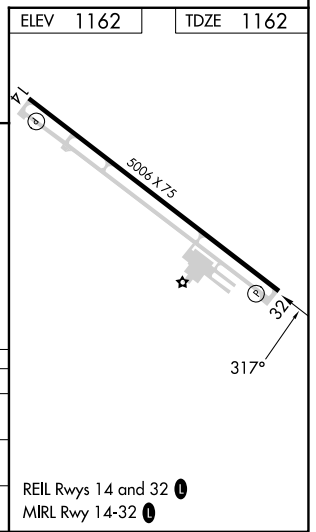
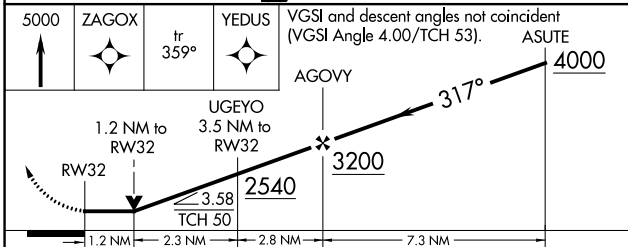
BEDFORD COUNTY (HMZ)

RNP APCH - GPS		MISSED APPROACH: Climb to 5000 direct ZAGOX and on track 359° to YEDUS and hold, continue climb-in-hold to 5000.
AWOS-3 123.675	JOHNSTOWN APP CON * 121.2 299.2	UNICOM 122.7 (CTAF)



NE-4, 11 JUL 2024 to 08 AUG 2024

NE-4, 11 JUL 2024 to 08 AUG 2024



CATEGORY	A	B	C	D
LP MDA	1740-1	578 (600-1)	1740-1½ 578 (600-1½)	NA
LNAV MDA	1860-1	698 (700-1)	1860-2 698 (700-2)	NA
CIRCLING	1900-1 738 (800-1)	1960-1 798 (800-1)	2200-3 1038 (1100-3)	NA

REIL Rwy 14 and 32 **0**
MIRL Rwy 14-32 **0**