

WAAS CH 40310 W14A	APP CRS 142°	Rwy Idg 4300 TDZE 21 Apt Elev 22
--	------------------------	---

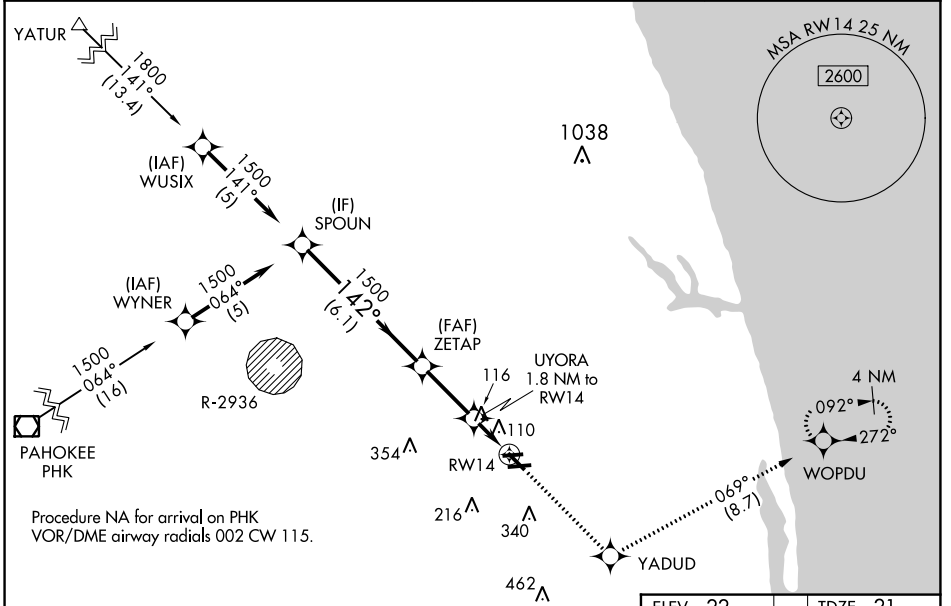
RNAV (GPS) RWY 14

NORTH PALM BEACH COUNTY GENERAL AVIATION (F45)

⚠ Circling NA to Rwys 9L and 27R. For uncompensated Baro-VNAV systems, LNAV/VNAV NA below -15°C (5°F) or above 54°C (130°F). DME/DME RNP-0.3 NA. When local altimeter not received, use Palm Beach Intl altimeter setting and increase LPV DA to 352 feet; increase LNAV/VNAV DA to 412 feet and all visibilities ½ SM; increase all MDA 40 feet and LNAV Cats C/D visibility ½ SM. Rwy 14 helicopter visibility reduction below ¾ SM NA. Baro-VNAV and VDP NA when using Palm Beach Intl altimeter setting.

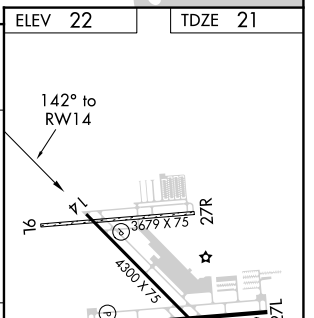
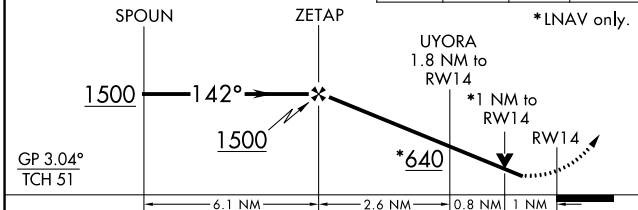
MISSED APPROACH: Climb to 2300 direct YADUD and on track 069° to WOPDU and hold.

AWOS-3 119.975	PALM BEACH APP CON 128.3 317.4	CLNC DEL 120.825	UNICOM 123.075 (CTAF) 0
--------------------------	--	----------------------------	-----------------------------------



VGSI and RNAV glidepath not coincident (VGSI Angle 3.00/TCH 40).

2300	YADUD	WOPDU
↑	✧	✧
	tr 069°	



CATEGORY	A	B	C	D
LPV DA		324-7/8	303 (400-7/8)	
LNAV/VNAV DA		384-1	363 (400-1)	
LNAV MDA		380-1	359 (400-1)	
CIRCLING	460-1 438 (500-1)	480-1 458 (500-1)	700-2 678 (800-2)	720-2¼ 698 (700-2¼)

MRL Rwy 9R-27L and 14-32 **0**
REIL Rwy 9R, 14, 27L and 32 **0**

SE-3, 11 JUL 2024 to 08 AUG 2024

SE-3, 11 JUL 2024 to 08 AUG 2024