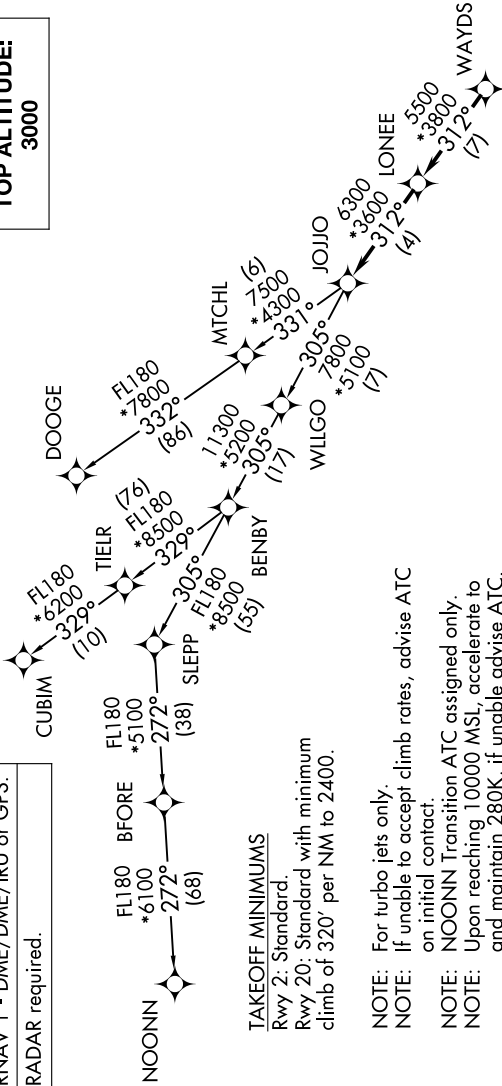


JOJO FIVE DEPARTURE (RNAV)

CHARLOTTE DEP CON
128.325 307.8
ATIS *
133.675
CLNC DEL
118.55
127.25
GND CON
121.85
CONCORD TOWER *
134.65 (CTAF)
UNICOM
122.95

**TOP ALTITUDE:
3000**



TAKEOFF MINIMUMS
Rwy 2: Standard.
Rwy 20: Standard with minimum climb of 320' per NM to 2400.

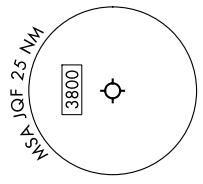
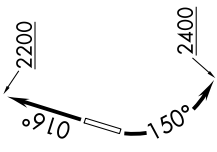
NOTE: For turbo jets only.
NOTE: If unable to accept climb rates, advise ATC on initial contact.
NOTE: NOONN Transition ATC assigned only.
NOTE: Upon reaching 10000 MSL, accelerate to and maintain 280K, if unable advise ATC.

DEPARTURE ROUTE DESCRIPTION

TAKEOFF RUNWAY 2: Climb on heading 016° to 2200, then on heading assigned by ATC, thence. . . .
TAKEOFF RUNWAY 20: Climbing left turn heading 150° to 2400, then on heading assigned by ATC, thence. . . .
. . . on RADAR vectors to WAYDS, then on depicted route to JOJJO. Then on assigned transition. Maintain 3000, expect filed altitude within 10 minutes after departure.

CUBIM TRANSITION (JOJO5.CUBIM)
DOOGE TRANSITION (JOJO5.DOOGE)
NOONN TRANSITION (JOJO5.NOONN)

NOTE: Chart not to scale.



SE-2, 11 JUL 2024 to 08 AUG 2024

SE-2, 11 JUL 2024 to 08 AUG 2024

JOJO FIVE DEPARTURE (RNAV)