

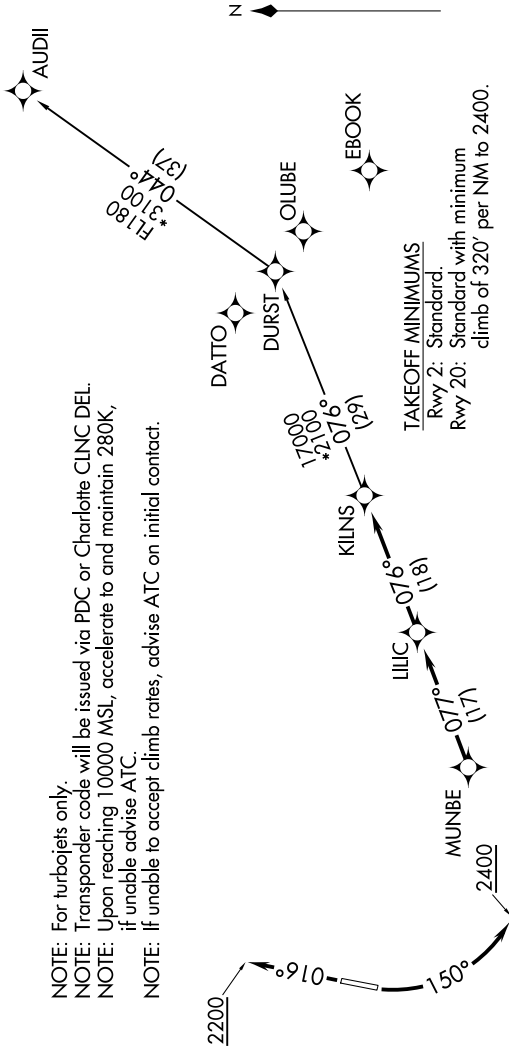
KILNS FIVE DEPARTURE (RNAV)

SE-2, 11 JUL 2024 to 08 AUG 2024

CHARLOTTE DEP CON
128.325 307.8
ATIS *
133.675
CLNC DEL
118.55
CLNC DEL (when twr closed)
127.25
GND CON
121.85
CONCORD TOWER *
134.65 (CTAF)
UNICOM
122.95

NOTE: For turbojets only.
NOTE: Transponder code will be issued via PDC or Charlotte CLNC DEL.
NOTE: Upon reaching 10000 MSL, accelerate to and maintain 280K, if unable advise ATC.
NOTE: If unable to accept climb rates, advise ATC on initial contact.

**TOP ALTITUDE:
3000**



TAKEOFF MINIMUMS
Rwy 2: Standard.
Rwy 20: Standard with minimum climb of 320' per NM to 2400.

DEPARTURE ROUTE DESCRIPTION

TAKEOFF RUNWAY 2: Climb on heading 016° to 2200, then on heading assigned by ATC, thence. . . .
TAKEOFF RUNWAY 20: Climbing left turn heading 150° to 2400, then on heading assigned by ATC, thence. . . .

. . . on RADAR vectors to MUNBE, then on depicted route to KILNS, then on AUDII transition. Maintain 3000. Expect clearance to filed altitude within 10 minutes after departure.

AUDIII TRANSITION (KILNS5.AUDIII)

NOTE: Chart not to scale.

KILNS FIVE DEPARTURE (RNAV)

SE-2, 11 JUL 2024 to 08 AUG 2024