

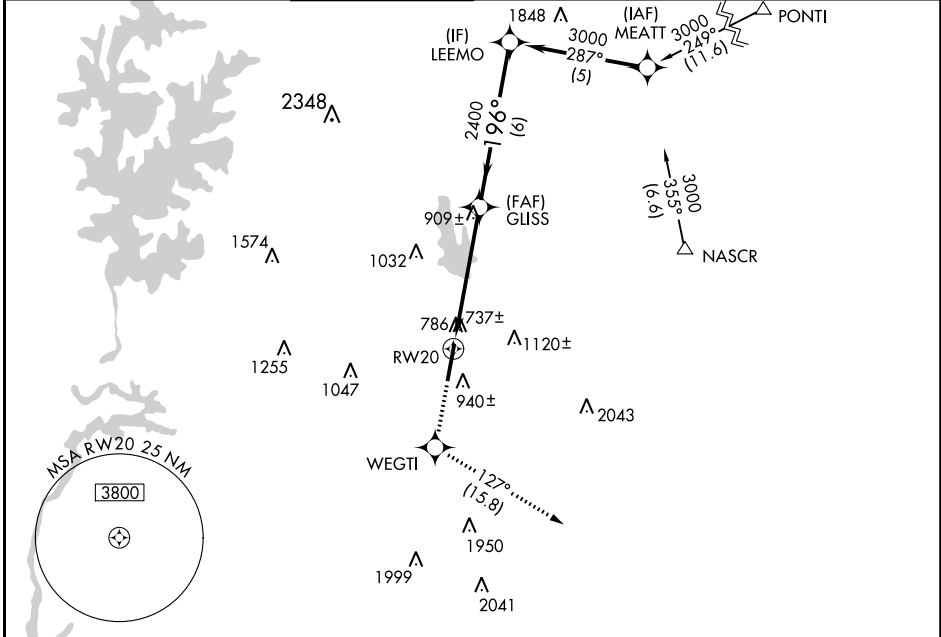
WAAS CH 56499 W20A	APP CRS 196°	Rwy Idg TDZE Apt Elev	6350 699 704
----------------------------------------	------------------------	-----------------------------	-----------------------------------------

RNAV (GPS) RWY 20

CONCORD-PADGETT RGNL (JQF)

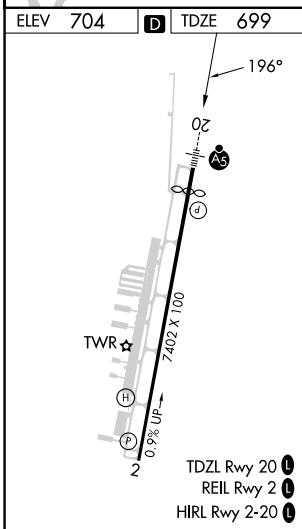
RNP APCH-GPS.	MALSR 	MISSED APPROACH: Climb to 3000 direct WEGTI and on track 127° to LOCAS and hold.
For uncompensated Baro-VNAV systems, LNAV/VNAV NA below -16°C or above 54°C. For inop ALS, increase LNAV/VNAV visibility all Cats to 1 3/8 SM. Rwy 20 helicopter visibility reduction below 3/4 SM NA.		

ATIS★ 133.675	CHARLOTTE APP CON 128.325 307.8	CONCORD TOWER★ 134.65 (CTAF) 0	GND CON 121.85	CLNC DEL 118.55	CLNC DEL 127.25 (when twr closed)	UNICOM 122.95
-------------------------	-------------------------------------------	------------------------------------------	--------------------------	---------------------------	------------------------------------------------	-------------------------



SE-2, 11 JUL 2024 to 08 AUG 2024

SE-2, 11 JUL 2024 to 08 AUG 2024



ELEV 704	D	TDZE 699	LOCAS 093° 4 NM 273°			
3000	WEGTI	LOCAS	LEEMO			
↑		↑	tr 127°			
*LNAV only.			GLISS	3000		
RW20			2400	196°		
*1.8 NM to RW20			2400	GP 3.00° TCH 44		
1.8 NM			3.3 NM	6 NM		
CATEGORY	A	B	C	D		
LPV DA	1026-3/4		327 (400-3/4)			
LNAV/VNAV DA	1222-1 1/4		523 (600-1 1/4)			
LNAV MDA	1300-3/4		601 (600-3/4)		1300-1 3/8 601 (600-1 3/8)	
CIRCLING	1300-1		596 (600-1)		1480-2 1/4 776 (800-2 1/4) 1480-2 1/2 776 (800-2 1/2)	