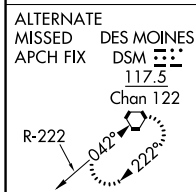
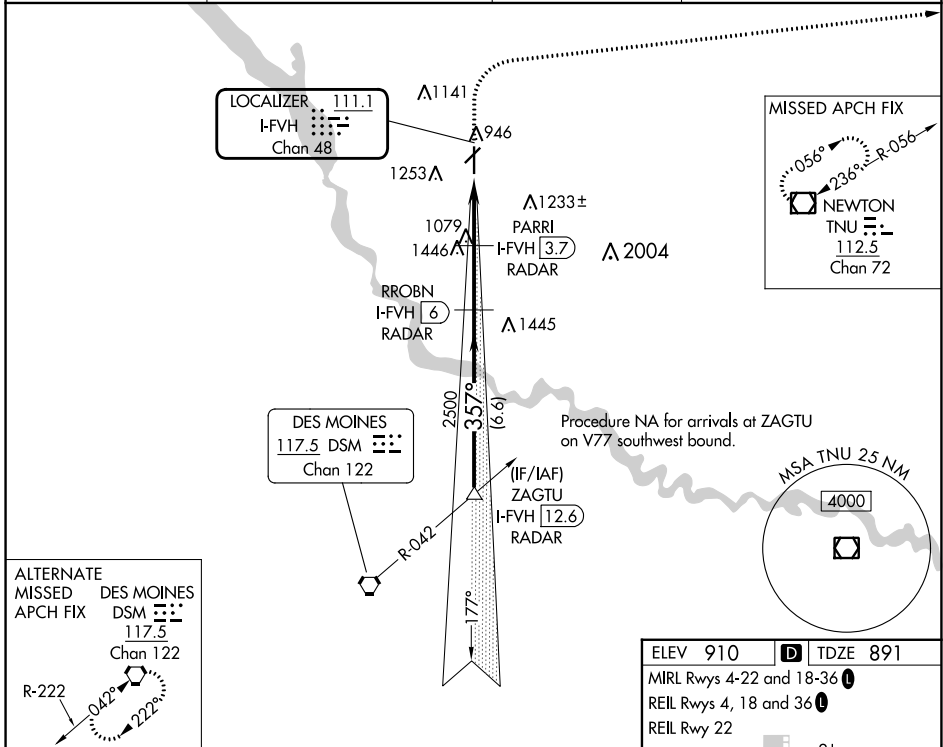


LOC/DME I-FVH 111.1 Chan 48	APP CRS 357°	Rwy Idg TDZE Apt Elev	5500 891 910
--	------------------------	-----------------------------	---

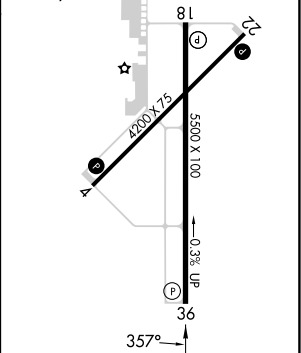
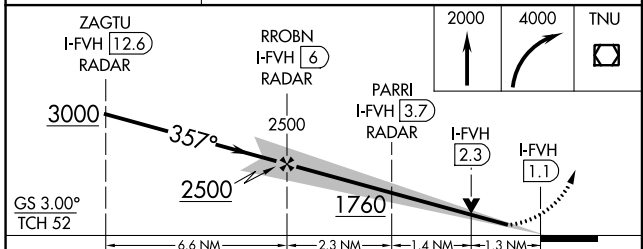
ILS or LOC RWY 36

ANKENY RGNL (IKV)

DME or RADAR required.		MISSED APPROACH: Climb to 2000 then climbing right turn to 4000 direct TNU VOR/DME and hold.	
AWOS-3 119.175	DES MOINES APP CON 123.9 307.15	CLNC DEL 126.65	UNICOM 122.9 (CTAF)



ELEV 910	D TDZE 891
MRL Rwy 4-22 and 18-36	
REIL Rwy 4, 18 and 36	
REIL Rwy 22	



CATEGORY	A	B	C	D
S-ILS 36	1091-3/4		200 (200-3/4)	
S-LOC 36	1340-1 449 (500-1)		1340-1 3/8 449 (500-1 3/8)	
C CIRCLING	1560-1 650 (700-1)		1560-1 3/8 850 (700-1 3/8) 1760-2 3/4 850 (900-2 3/4)	

FAF to MAP 4.9 NM					
Knots	60	90	120	150	180
Min:Sec	4:54	3:16	2:27	1:58	1:38

NC-3, 11 JUL 2024 to 08 AUG 2024

NC-3, 11 JUL 2024 to 08 AUG 2024