

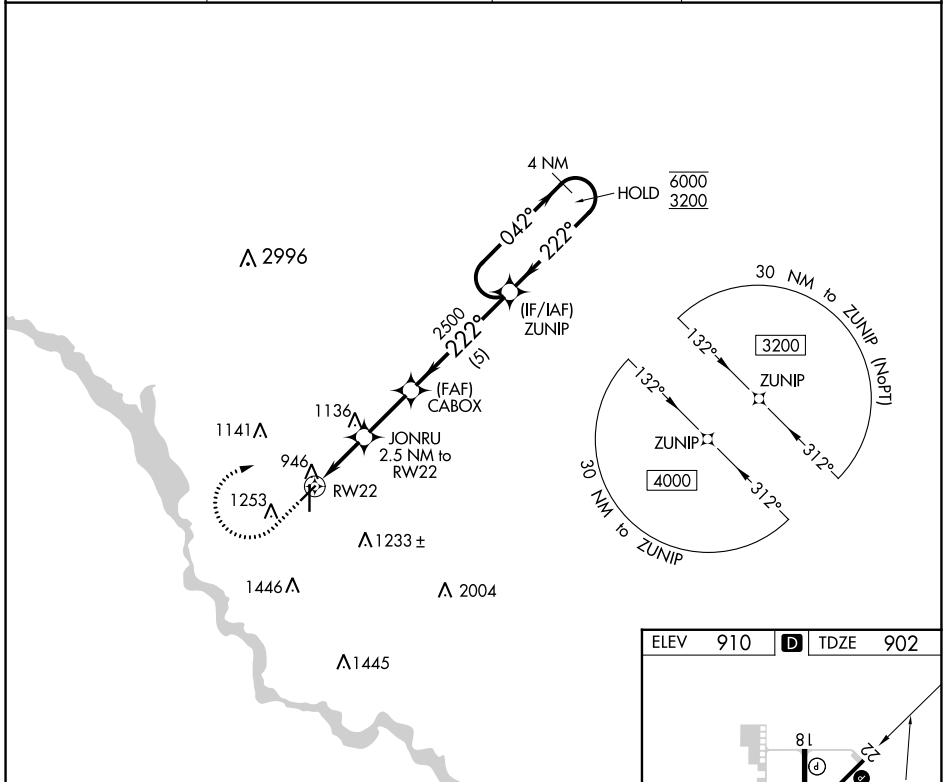
APP CRS	Rwy Idg	4200
222°	TDZE	902
	Apt Elev	910

RNAV (GPS) RWY 22

ANKENY RGNL (IKV)

RNP APCH - GPS.		MISSED APPROACH: (Do not exceed 240K until ZUNIP). Climb to 1500 then climbing right turn to 3200 direct ZUNIP and hold.	
Rwy 22 helicopter visibility reduction below 3/4 SM NA.			

AWOS-3 119.175	DES MOINES APP CON 123.9 307.15	CLNC DEL 126.65	UNICOM 122.9 (CTAF)
--------------------------	---	---------------------------	-------------------------------



NC-3, 11 JUL 2024 to 08 AUG 2024

NC-3, 11 JUL 2024 to 08 AUG 2024

ELEV	910	D	TDZE	902
------	-----	----------	------	-----

MRL Rwy 4-22 and 18-36 **I**
REIL Rwy 4, 18 and 36 **I**
REIL Rwy 22

1500	3200	ZUNIP	VGSI and descent angles not coincident (VGSI Angle 3.00/TCH 32).		4 NM Holding Pattern
CABOX		ZUNIP			
1.3 NM to RWY 22		2.5 NM to RWY 22		042° → 6000	
1740		2500		← 222° ← 3200	
1.3		1.2		2.4 NM	
A		B		C	
LNVA MDA	1360-1	458 (500-1)	1360-1 ³ / ₈	458 (500-1 ³ / ₈)	
C CIRCLING	1560-1	650 (700-1)	1560-1 ³ / ₄	1760-2 ³ / ₄	850 (900-2 ³ / ₄)