

WAAS CH 70512 W36A	APP CRS 357°	Rwy Idg TDZE Apt Elev	5500 891 910
--	------------------------	-----------------------------	---

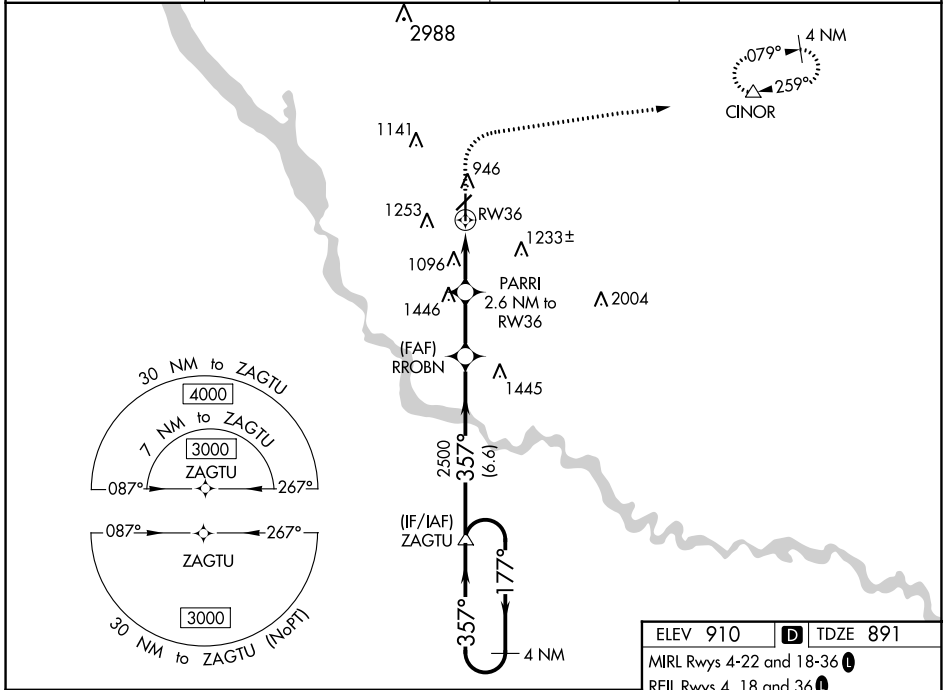
RNAV (GPS) RWY 36

ANKENY RGNL (IKV)

▽
▲ For uncompensated Baro-VNAV systems, LNAV/VNAV NA below -20°C (-4°F) or above 54°C (130°F). Circling Rwy 22 NA at night. DME/DME RNP-0.3 NA.

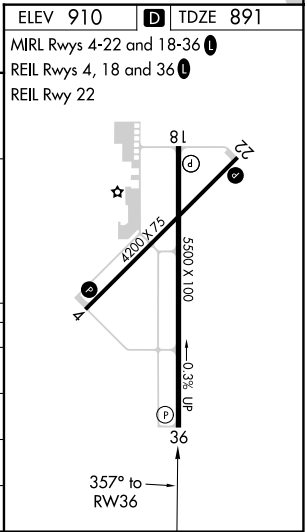
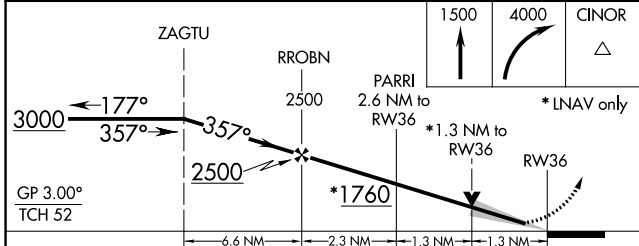
MISSED APPROACH: Climb to 1500 then climbing right turn to 4000 direct CINOR and hold, continue climb-in-hold to 4000.

AWOS-3 119.175	DES MOINES APP CON 123.9 307.15	CLNC DEL 126.65	UNICOM 122.9 (CTAF) ①
--------------------------	---	---------------------------	---------------------------------



NC-3, 11 JUL 2024 to 08 AUG 2024

NC-3, 11 JUL 2024 to 08 AUG 2024



CATEGORY	A	B	C	D
LPV DA		1091-3/4	200 (200-3/4)	
LNAV/VNAV DA		1405-13/4	514 (500-13/4)	
LNAV MDA	1360-1	469 (500-1)	1360-13/8	469 (500-13/8)
C CIRCLING	1560-1	650 (700-1)	1560-13/4 650 (700-13/4)	1760-23/4 850 (900-23/4)