

WAAS CH 50401 W18A	APP CRS 180°	Rwy Idg TDZE Apt Elev	3500 675 675
--	------------------------	-----------------------------	---

RNAV (GPS) RWY 18

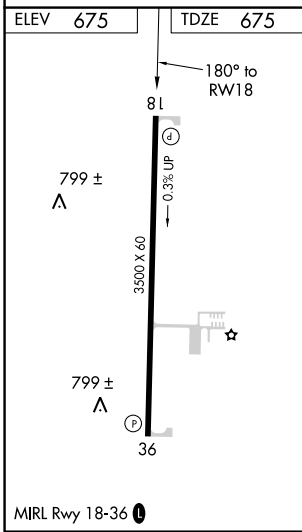
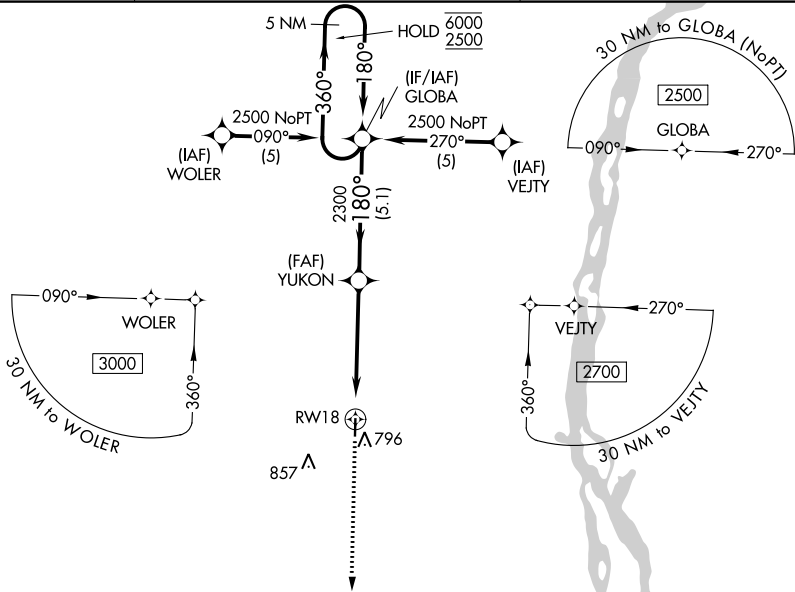
LEWIS COUNTY RGNL (6M6)

RNP APCH.

Baro-VNAV NA. Use Quincy altimeter setting; when not received use Kirksville altimeter setting:
 increase LPV DA to 1098 feet; increase LNAV/VNAV DA to 1145 feet; increase all MDA 80 feet.

MISSED APPROACH:
 Climb to 2300 direct
 GRITE and hold.

UIN ASOS 121.425	KANSAS CITY CENTER 126.225 317.775	UNICOM 122.7 (CTAF) 0
----------------------------	--	---------------------------------



4 NM Holding Pattern for GLOBALA. GP 3.00° TCH 40. Waypoints YUKON and GRITE. Distances 4.9 NM and 5.1 NM.

CATEGORY	A	B	C	D
LPV DA	1035-1¼	360 (400-1¼)		NA
LNAV/VNAV DA	1082-1½	407 (500-1½)		NA
LNAV MDA	1220-1	545 (600-1)		NA

NC-3, 11 JUL 2024 to 08 AUG 2024

NC-3, 11 JUL 2024 to 08 AUG 2024