

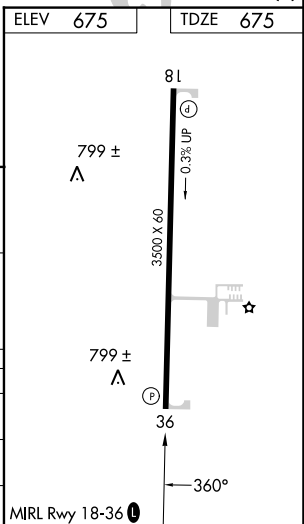
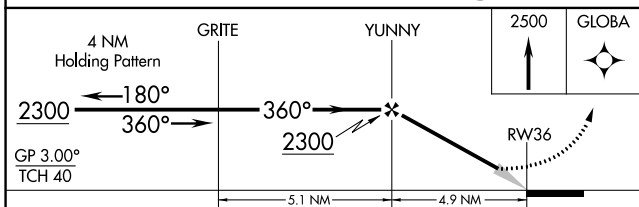
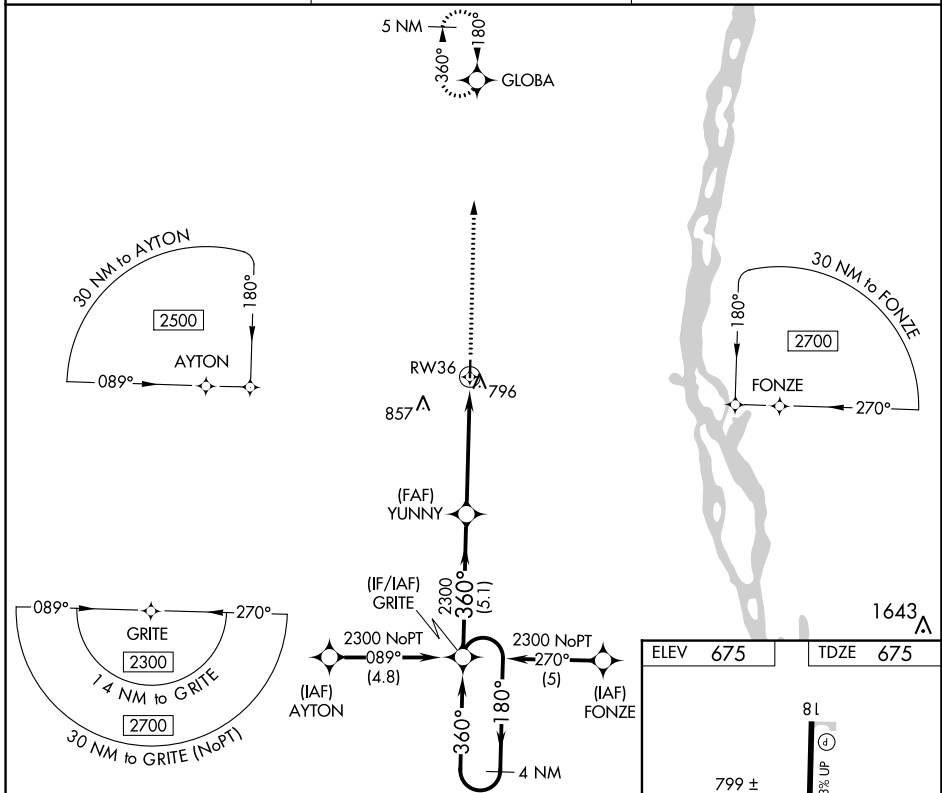
WAAS CH <b>97601</b> <b>W36A</b>	APP CRS <b>360°</b>	Rwy Idg TDZE Apt Elev	<b>3500</b> <b>675</b> <b>675</b>
--	------------------------	-----------------------------	---

# RNAV (GPS) RWY 36

LEWIS COUNTY RGNL (6M6)

RNP APCH.	MISSED APPROACH: Climb to 2500 direct GLOBA and hold.
<p><b>▼</b> Baro-VNAV NA. Use Quincy altimeter setting; if not received, use  <b>▲</b> NA Kirksville altimeter setting and increase all DAs/MDAs 80 feet.</p>	

UIN ASOS <b>121.425</b>	KANSAS CITY CENTER <b>126.225 317.775</b>	UNICOM <b>122.7 (CTAF) 0</b>
----------------------------	--	---------------------------------



CATEGORY	A	B	C	D
LPV DA	996-1¼	321 (400-1¼)		NA
LNAV/VNAV DA	1137-1¾	462 (500-1¾)		NA
LNAV MDA	1120-1	445 (500-1)		NA

NC-3, 11 JUL 2024 to 08 AUG 2024

NC-3, 11 JUL 2024 to 08 AUG 2024